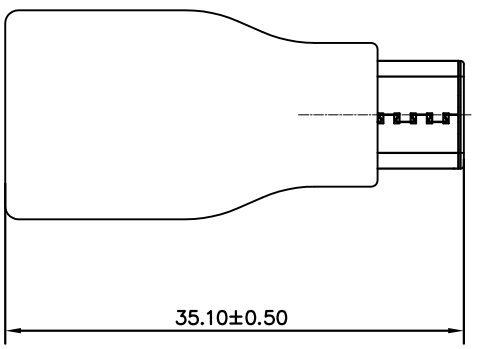
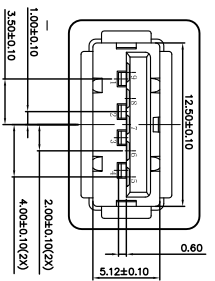
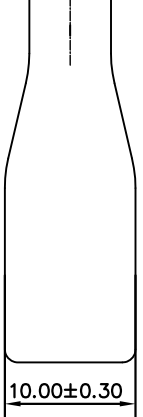
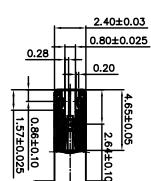
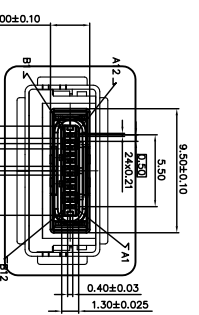
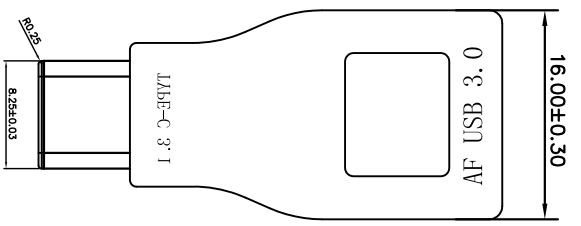


项目	零件名称	数量	材质	处理/备注
1		1		
2		2		



**:SPECIFICATION**

**MATERIAL**  
See drawing  
**STANDARD DATA**

Operating temperature: -10° C ~ +60° C  
Storage temperature: -20° C ~ +85° C  
**ELECTRICAL**

Insulator resistance: 100Mohms Min.  
Withstanding voltage: 100 VAC / minute  
Contact resistance: initial 40ohms Max;  
after 50ohms Max.

**MECHANICAL**

Mating force: 5~20N  
Umating force : 8~20N  
Durability: 5000 cycles Min.  
**MATERIAL:**

Housing: PBT+30%GF 94V-0 COLOR: BLUE  
Contact: copper alloy (T=0.25mm)  
Shell: Brass  
**PLATING:**

Contact: Au Plated on contact area  
Tin Plated on solder area  
Shell: Nickel Plated  
operating Temperature: -55~to+85~

**产品图**  
PRODUCT CHART DWG

**深圳市精拓金电子有限公司**

公差一览表 TOLERANCE UNLESS OTHERWISE		单位 UNITS	MM	制图 DRAWING	Z-Y-B	产品料号 PRODUCT PART NO.	产品名称 PRODUCT NAME	角法 VIEW	版本 VER
X	±0.25	X'	±5'	审核			SB-3.1 公头/双面PCB板转180度3.0成品	⊕	A0
.X	±0.20	.X'	±2'	核准				⊕	
.XX	±0.15	.XX'	±1'	核准				⊕	
.XXX	±0.10	.XXX'	±0.5'	核准				⊕	
		比例 SCALE	1:1	日期 DATE	2015.10.14				