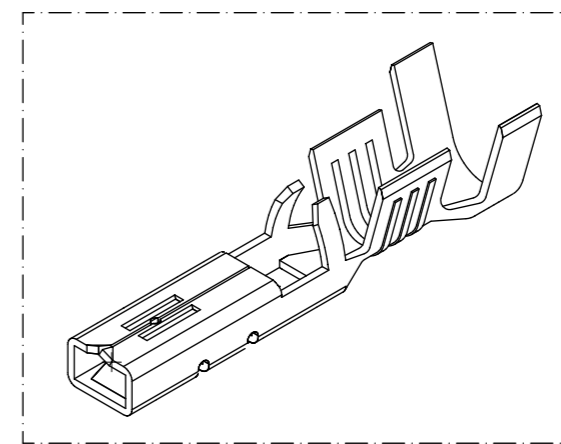
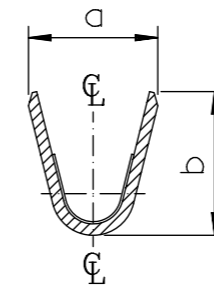
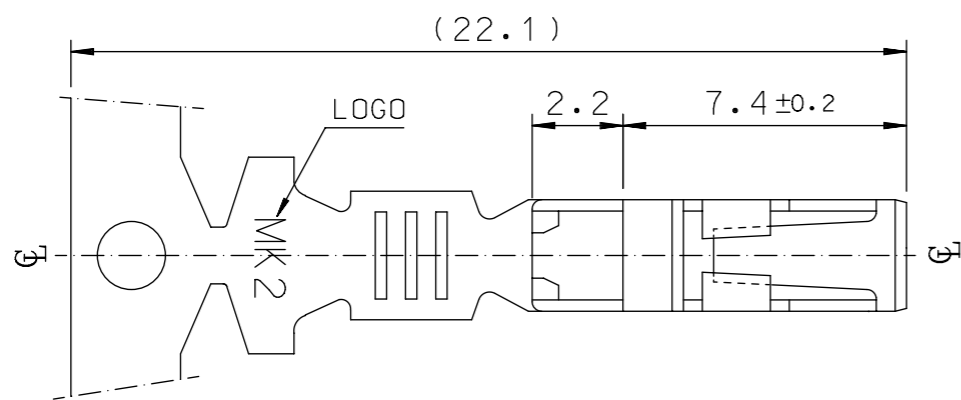
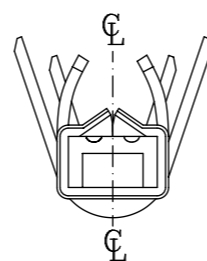
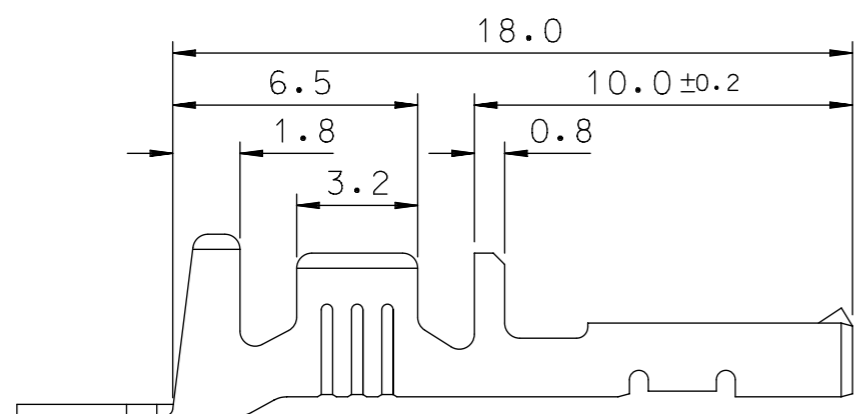


SEC' : B-B''

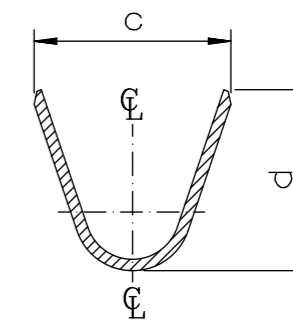
- NOTES
1. MATERIAL : PHOSPHOR BRONZE
0.3mm THICKNESS
 2. FINISH : PRE-PLATED TIN
 3. RECOMMENDED LENGTH OF WIRE STRIP IS 4.0-4.8mm.



ISOMETRIC VIEW



SEC' : C-C''

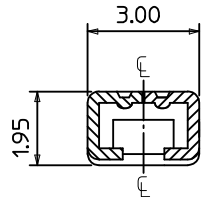
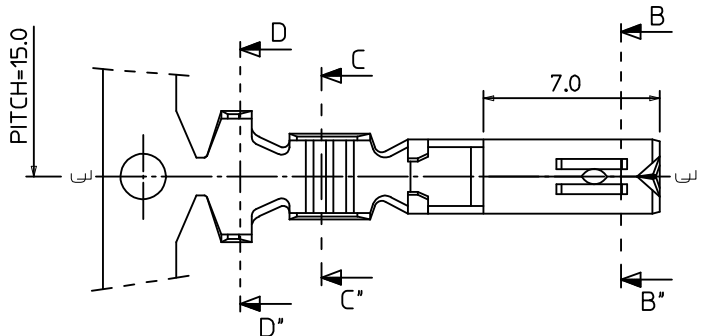


SEC' : D-D''

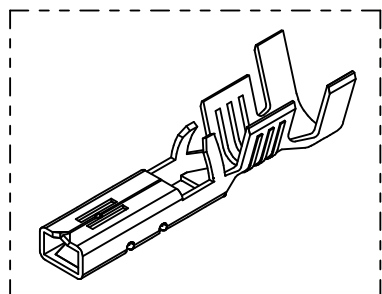
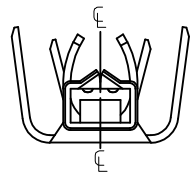
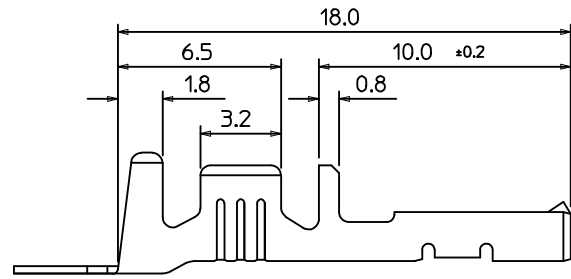
PRE-RELEASE

MATERIAL NO	ENG. No.	AWG	a	b	c	d	P
357480210	35748-0210	#18-#14	3.4	3.8	5.2	4.8	12.0
357480110	35748-0110	#22-#20	2.85	2.8	4.2	4.0	10.6
357480410	35748-0410	#24	2.2	1.75	3.85	3.5	10.6

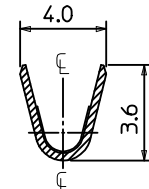
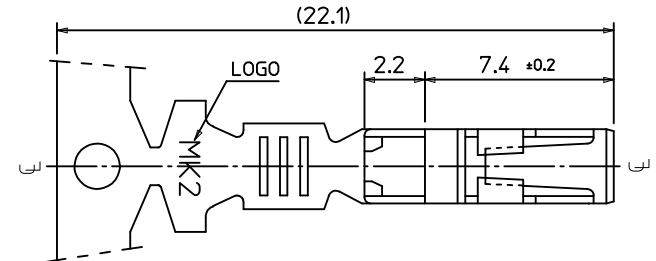
SYMBOLS		THIS DRAWING CONTAINS INFORMATION THAT IS PROPRIETARY TO MOLEX ELECTRONIC TECHNOLOGIES, LLC AND SHOULD NOT BE USED WITHOUT WRITTEN PERMISSION		CURRENT REV DESC:		molex	
▽ = 0	mm	SCALE	1:1	EC NO: 177777			
▽ = 0	GENERAL TOLERANCES (UNLESS SPECIFIED)		DRWN: JSSHIN		2018/06/01	PRODUCT CUSTOMER DRAWING	
▽ = 0	ANGULAR TOL ± 1.0°		CHK'D: SHCHU		2018/06/08	DOCUMENT NUMBER	
▽ = 0	4 PLACES ±	APPR: YSKIM02		2018/06/08	SD-35748-001		DOC TYPE
▽ = 0	3 PLACES ±	INITIAL REVISION:		DRWN: CBCHIN		2002/04/15	DOC PART
▽ = 0	2 PLACES ± 0.3	DRWN: CBCHIN		2002/04/15	APPR: CHANGWOOLEE		REVISION
▽ = 0	1 PLACE ± 0.3	APPR: CHANGWOOLEE		2002/04/22	SERIES		F1
▽ = 0	0 PLACES ±	DRAFT WHERE APPLICABLE MUST REMAIN WITHIN DIMENSIONS		THIRD ANGLE PROJECTION		MATERIAL NUMBER	
▽ = 0	DRAWING		A3-SIZE	SERIES		35748	CUSTOMER
DOCUMENT STATUS		RELEASE DATE		SEE TABLE		GENERAL MARKET	
SHEET NUMBER		1 OF 1					



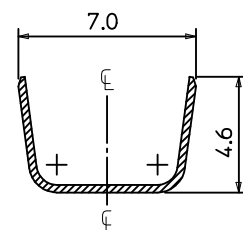
SEC' : B-B'



ISOMETRIC VIEW



SEC' : C-C'



SEC' : D-D'

NOTES

1. MATERIAL : PHOSPHOR BRONZE
0.3mm THICKNESS
2. FINISH : PRE-PLATED TIN
3. RECOMMENDED LENGTH OF WIRE STRIP IS 4.0-4.8mm.
- ④ 4. APPLICABLE WIRE SIZE : AWG #20+#20
AWG #20+#18
AWG #18+#18

REVISED EC NO: KOR2016-0060 DRWN: JSSHIN 2015/12/24 CHKD: SHCHU 2015/12/28 APPR: YSK1M02 2015/12/30	DESCRIPTION 1	QUALITY SYMBOLS	GENERAL TOLERANCES (UNLESS SPECIFIED)	DIMENSION STYLE	SCALE	DESIGN UNITS	THIRD ANGLE PROJECTION
		$\nabla=0$ $\sphericalangle=0$	mm INCH	MM ONLY	5:1	METRIC	
		4 PLACES ± --- ± --- 3 PLACES ± --- ± --- 2 PLACES ± 0.3 ± --- 1 PLACE ± 0.3 ± ---	DRAWN BY: BKCH01 CHECKED BY: BKCH01 APPROVED BY: YSK1M02 DATE: 1992/11/17 DATE: 1992/11/17 DATE: 2015/12/30	TITLE	.070 FEMALE TERMINAL (B-TYPE)		
		ANGULAR ± 1 °	MATERIAL NO.	MOLEX INCORPORATED			
		DRAFT WHERE APPLICABLE MUST REMAIN WITHIN DIMENSIONS	357480310	DOCUMENT NO.	SD-35748-003		
		SIZE	THIS DRAWING CONTAINS INFORMATION THAT IS PROPRIETARY TO MOLEX INCORPORATED AND SHOULD NOT BE USED WITHOUT WRITTEN PERMISSION				