

TPS65135 单电感器、多路输出稳压器

1 特性

- 单电感器、多路输出拓扑
- 输入电压范围：2.5V 至 5.5V
- $V_I = 2.9V$ 时，输出功率为 750mW
- 输出的正电压高达 6V
- 输出的负电压低至 -7V
- 输出电压精度为 1%
- 允许的输出电流失配高达 50%
- 出色线路稳压
- 用于实现轻负载效率的高级节电模式
- 低噪声运行
- 无声模式
- 短路保护功能
- 热关断
- 3mm x 3mm 超薄 QFN 封装

2 应用

- AMOLED 显示电源
- LCD 电源
- 分离轨电源，适用于运算放大器、数据转换器、数据接口等。

3 说明

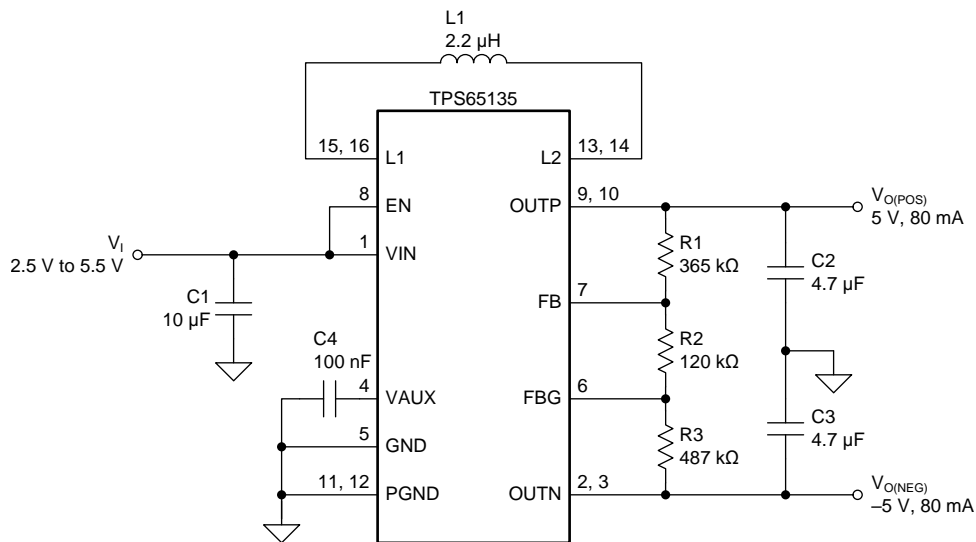
TPS65135 器件是一款高效的分离轨电源。该转换器具有单电感器和多输出 (SIMO) 拓扑，因此使用的外部组件极少。该器件采用降压/升压拓扑，并生成高于或低于输入电源电压的正负输出电压。SIMO 拓扑可实现出色的线路和负载调节，这一特性非常必要，例如，可避免移动通信系统在传输阶段产生的输入电压偏差对手机显示的干扰。如果两轨之间的输出电流失配小于 50%，该器件也可用作通用分离轨电源。

器件信息⁽¹⁾

器件型号	封装	封装尺寸 (标称值)
TPS65135	WQFN (16)	3.00mm x 3.00mm

(1) 要了解所有可用封装，请见数据表末尾的可订购产品附录。

典型应用电路原理图



Copyright © 2017, Texas Instruments Incorporated



目录

1	特性	1	7.4	Device Functional Modes.....	11
2	应用	1	8	Application and Implementation	12
3	说明	1	8.1	Application Information.....	12
4	修订历史记录	2	8.2	Typical Application	12
5	Pin Configuration and Functions	3	9	Power Supply Recommendations	19
6	Specifications	4	10	Layout	19
6.1	Absolute Maximum Ratings	4	10.1	Layout Guidelines	19
6.2	ESD Ratings.....	4	10.2	Layout Example	20
6.3	Recommended Operating Conditions.....	4	11	器件和文档支持	21
6.4	Thermal Information	4	11.1	器件支持	21
6.5	Electrical Characteristics.....	5	11.2	接收文档更新通知	21
6.6	Typical Characteristics	6	11.3	社区资源.....	21
7	Detailed Description	7	11.4	商标.....	21
7.1	Overview	7	11.5	静电放电警告.....	21
7.2	Functional Block Diagram	8	11.6	Glossary	21
7.3	Feature Description.....	9	12	机械、封装和可订购信息.....	21

4 修订历史记录

注：之前版本的页码可能与当前版本有所不同。

Changes from Revision B (June 2015) to Revision C

Page

- Changed L2 pin numbers From: 1 and 14 To: 13 and 14 in the *Pin Functions* table **3**
- Changed PGND pin numbers From: 11 and 11 To: 11 and 12 in the *Pin Functions* table..... **3**

Changes from Revision A (November 2011) to Revision B

Page

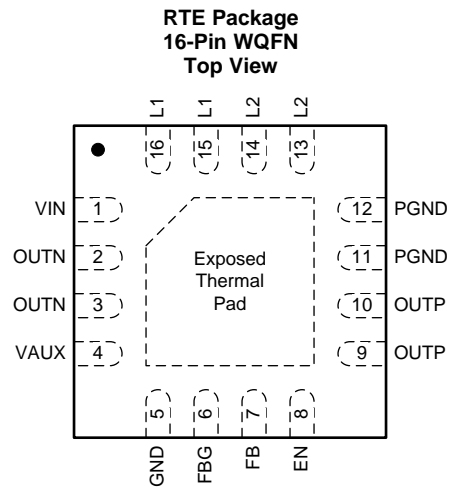
- 已添加 引脚配置和功能部分、ESD 额定值表、特性描述部分、器件功能模式、应用和实施部分、电源相关建议部分、布局部分、器件和文档支持部分以及机械、封装和可订购信息部分 **1**
- Moved output current mismatch to Recommended Operating Conditions

Changes from Original (November 2011) to Revision A

Page

- Changed the UVLO threshold max value for V_{IN} falling From: 2 V To 2.1 V **5**

5 Pin Configuration and Functions



Pin Functions

PIN		I/O	DESCRIPTION
NAME	NO.		
EN	8	I	Input pin to enable the device. Pulling this pin high enables the device. This pin has an internal 500-k Ω pull-down resistor.
FB	7	I	Feedback regulation point for the positive output voltage rail
FBG	6	I	Feedback regulation point for the negative output voltage rail
GND	5	–	Analog ground
L1	15	I/O	Inductor terminal
	16		
L2	13	I/O	Inductor terminal
	14		
OUTN	2	O	Negative output
	3		
OUTP	9	O	Positive output
	10		
PGND	11	–	Power ground
	12		
VAUX	4	I/O	Reference voltage output. This pin requires a 100-nF capacitor for stability.
VIN	1	I	Input supply
Exposed thermal pad	—	–	Connect this pad to ground

6 Specifications

6.1 Absolute Maximum Ratings⁽¹⁾⁽²⁾

over operating free-air temperature range (unless otherwise noted)

		MIN	MAX	UNIT
Voltage	VIN, EN, VAUX, FB, OUTP, L2	-0.3	7	V
	L1, OUTN	-8	7	V
	FBG	-0.3	0.3	V
Operating junction temperature, T _J		-40	150	°C
Operating ambient temperature, T _A		-40	85	°C
Storage temperature, T _{stg}		-65	150	°C

- (1) Stresses beyond those listed under *Absolute Maximum Ratings* may cause permanent damage to the device. These are stress ratings only, and functional operation of the device at these or any other conditions beyond those indicated under *Recommended Operating Conditions* is not implied. Exposure to absolute-maximum-rated conditions for extended periods may affect device reliability.
- (2) All voltage values are with respect to ground.

6.2 ESD Ratings

		VALUE	UNIT
V _(ESD) Electrostatic discharge	Human body model (HBM), per ANSI/ESDA/JEDEC JS-001 ⁽¹⁾	±2000	V
	Charged-device model (CDM), per JEDEC specification JESD22-C101 ⁽²⁾	±1000	
	Machine model (MM)	±200	

- (1) JEDEC document JEP155 states that 500-V HBM allows safe manufacturing with a standard ESD control process.
- (2) JEDEC document JEP157 states that 250-V CDM allows safe manufacturing with a standard ESD control process.

6.3 Recommended Operating Conditions

		MIN	TYP	MAX	UNIT
V _I	Input voltage range	2.5		5.5	V
I _{O(POS)} / I _{O(NEG)}	Output current mismatch	0.5		2	
P _O	Output power (V _I = 2.9 V, V _{O(POS)} – V _{O(NEG)} ≤ 10 V)			750	mW
L	Inductor ⁽¹⁾	1	2.2	4.7	μH
C _(IN)	Input Capacitor ⁽¹⁾	4.7	10		μF
C _{O(POS)} , C _{O(NEG)}	Output Capacitors ⁽¹⁾	4.7	10	20	μF
T _A	Operating ambient temperature	-40		85	°C
T _J	Operating junction temperature	-40		125	°C

- (1) Please refer to [Application Information](#) for further information

6.4 Thermal Information

THERMAL METRIC ⁽¹⁾		TPS65135	UNIT
		RTE (WQFN)	
		16 PINS	
R _{θJA}	Junction-to-ambient thermal resistance	44.8	°C/W
R _{θJC(top)}	Junction-to-case (top) thermal resistance	42	°C/W
R _{θJB}	Junction-to-board thermal resistance	4.3	°C/W
ψ _{JT}	Junction-to-top characterization parameter	16.9	°C/W
ψ _{JB}	Junction-to-board characterization parameter	0.4	°C/W
R _{θJC(bot)}	Junction-to-case (bottom) thermal resistance	16.8	°C/W

- (1) For more information about traditional and new thermal metrics, see the [Semiconductor and IC Package Thermal Metrics](#) application report.

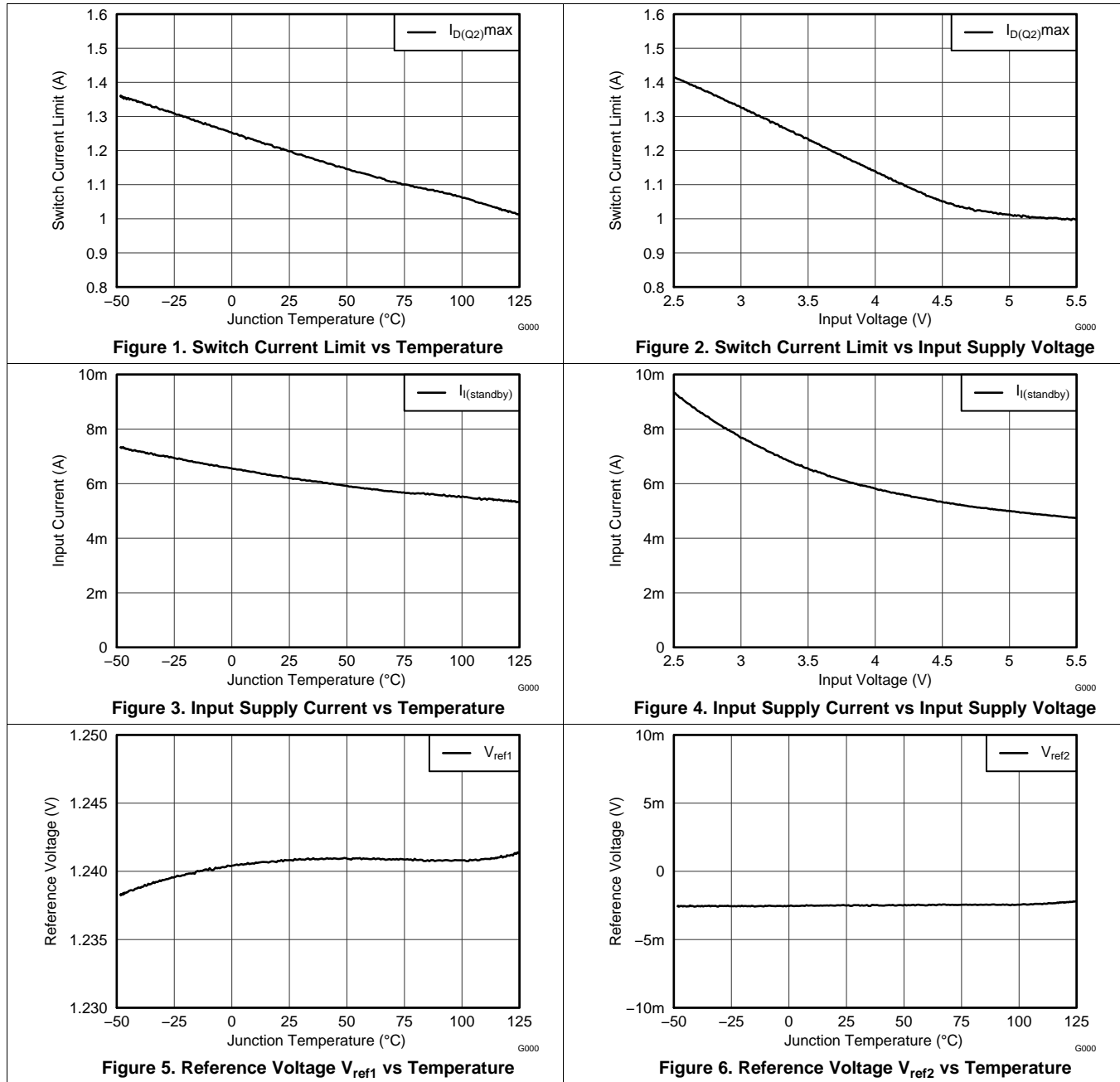
6.5 Electrical Characteristics

$V_I = 3.7\text{ V}$, $V_{(EN)} = V_I$, $V_{O(POS)} = 5\text{ V}$, $V_{O(NEG)} = -5\text{ V}$, $T_A = -40^\circ\text{C}$ to 85°C ; typical values are at $T_A = 25^\circ\text{C}$ (unless otherwise noted).

PARAMETER		TEST CONDITIONS	MIN	TYP	MAX	UNIT
SUPPLY CURRENT						
V_I	Input voltage range		2.5		5.5	V
$I_{I(\text{standby})}$	Quiescent current	EN = H; measured into VIN pin		7		mA
	Shutdown current	EN = L; measured into VIN pin		0.1	2	μA
UNDERVOLTAGE LOCKOUT						
	Input threshold voltage (VIN) (undervoltage lockout)	V_I rising		2	2.3	V
		V_I falling		1.8	2.1	V
THERMAL SHUTDOWN						
	Thermal shutdown junction temperature			140		$^\circ\text{C}$
	Thermal shutdown hysteresis			5		$^\circ\text{C}$
ENABLE						
	High-level input voltage (EN)	$V_I = 2.5\text{ V}$ to 5.5 V	1.2			V
	Low-level input voltage (EN)	$V_I = 2.5\text{ V}$ to 5.5 V			0.4	V
$R_{(EN)}$	Pull-down resistor (EN)		200	500	900	$\text{k}\Omega$
OUTPUT						
$V_{O(POS)}$	Positive output voltage range		3		6	V
	Threshold voltage (OUTP) (overvoltage protection)	$I_{O(POS)} = 10\text{ mA}$	6.1	7		V
$V_{O(NEG)}$	Negative output voltage range		-7		-2.5	V
	Threshold voltage (OUTN) (overvoltage protection)	$I_{O(NEG)} = -10\text{ mA}$		-7.6	-7.1	V
V_{ref1}	Positive output reference voltage		-1%	1.24	+1%	V
V_{ref2}	Negative output reference voltage		-10	0	10	mV
	MOSFET on-state resistance (Q1)	$I_{D(Q1)} = 100\text{ mA}$		250		$\text{m}\Omega$
	MOSFET on-state resistance (Q2)	$I_{D(Q2)} = 100\text{ mA}$		200		$\text{m}\Omega$
	MOSFET on-state resistance (Q3)	$I_{D(Q3)} = 100\text{ mA}$		500		$\text{m}\Omega$
	MOSFET on-state resistance (Q4)	$I_{D(Q4)} = 100\text{ mA}$		300		$\text{m}\Omega$
$I_{D(Q2)\text{max}}$	Q2 switch current limit	$V_I = 3.7\text{ V}$	0.9	1.2	1.6	A
		$V_I = 2.5\text{ V}$	1	1.5	1.9	

6.6 Typical Characteristics

$V_I = 3.7\text{ V}$ and $T_A = 25^\circ\text{C}$ unless otherwise noted



7 Detailed Description

7.1 Overview

The TPS65135 device uses a four-switch buck-boost converter topology to generate one negative and one positive output voltage with a single inductor. The device uses a SIMO topology to achieve excellent line transient response, buck-boost mode for both outputs, and high efficiency over the entire output current range. High efficiency over the entire load-current range is implemented by reducing the converter switching frequency under low load conditions. Out-of-audio mode prevents the switching frequency going below 20 kHz.

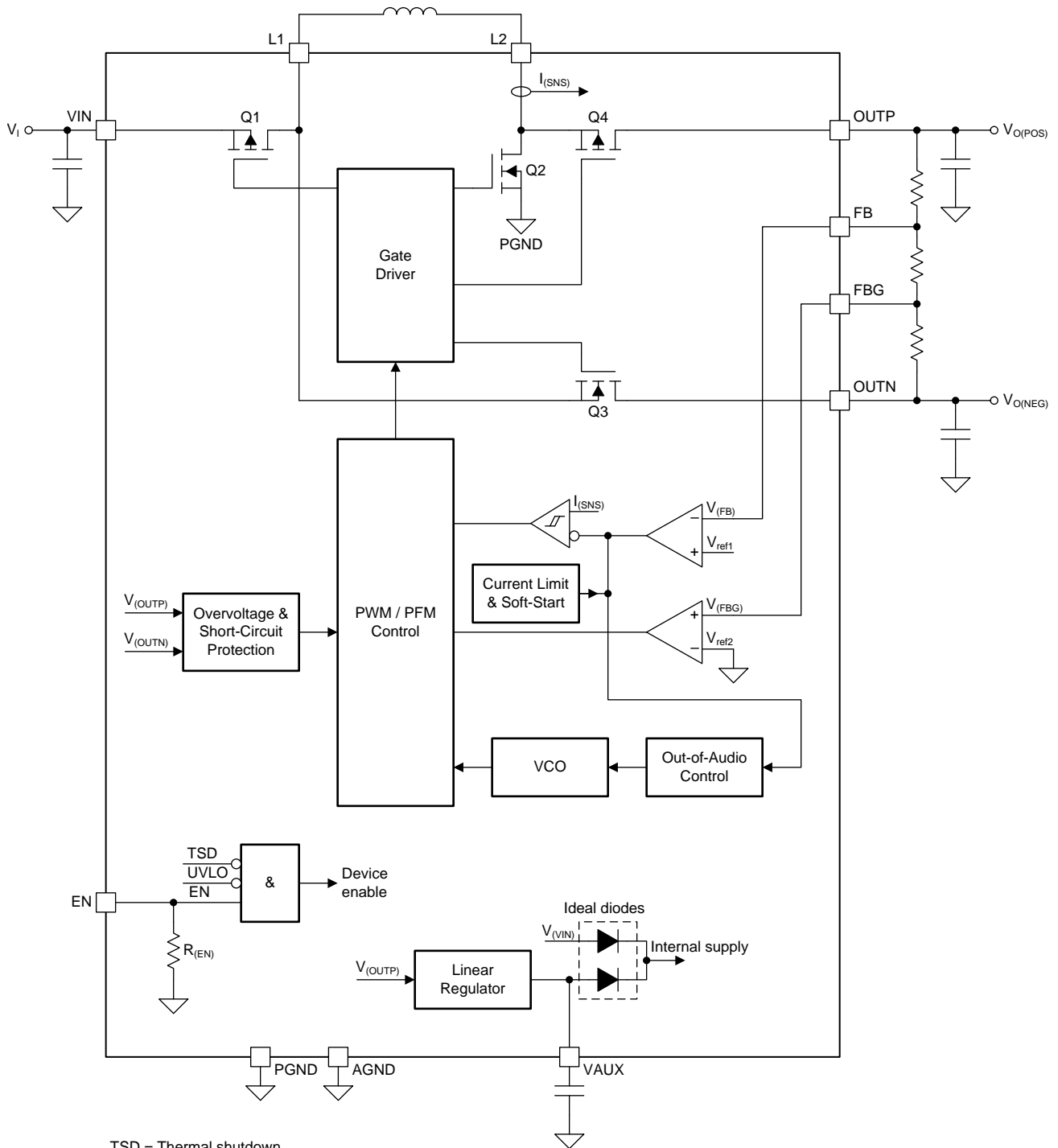
The converter operates with two control loops. One error amplifier controls the positive output voltage $V_{O(POS)}$ so that the FB pin is regulated to 1.24 V. A second error amplifier controls the negative output voltage $V_{O(NEG)}$ so that the FBG pin is regulated to 0 V. An external feedback divider allows both output voltages to be set to the desired value. In principle, the SIMO converter topology operates just like any other buck-boost converter topology, with the difference that the output voltage across the inductor is the sum of the positive and negative output voltages. With this consideration all calculations of the buck-boost converter apply for this topology as well. During the first part of a switching cycle Q1 and Q2 are closed, connecting the inductor from V_I to ground. During the second part of a switching cycle, the inductor discharges to the positive and negative outputs by closing switches Q4 and Q3. Because the inductor is discharged to both of the outputs simultaneously, the output voltages can be higher or lower than the input voltage. The converter operates best when the positive output current $I_{O(POS)}$ is equal to the negative output current $I_{O(NEG)}$, for example, as is the case when driving an AMOLED display. However, asymmetries of up to 50% in load current can be canceled out by the used topology. In such cases, a third part of the switching cycle is implemented, during which either Q3 is turned off and Q1 is turned on (as is the case when $I_{O(POS)} > I_{O(NEG)}$) or Q4 is turned off and Q2 is turned on (as is the case when $I_{O(NEG)} > I_{O(POS)}$) (see [Table 1](#)).

During light loads the converter operates in DCM, using peak-current control and a switching frequency determined by a voltage-controlled oscillator (VCO). At higher load currents the converter operates in CCM with a switching frequency controlled by a fixed off-time. The SIMO regulator topology achieves its best line transient response when operating in DCM.

Table 1. Switch Control

Switching Cycle	Q1	Q2	Q3	Q4	Remark
Part 1	On	On	Off	Off	
Part 2	Off	Off	On	On	
Part 3	On	Off	Off	On	If $I_{O(POS)} > I_{O(NEG)} $
	Off	On	On	Off	If $ I_{O(NEG)} > I_{O(POS)}$

7.2 Functional Block Diagram



Copyright © 2017, Texas Instruments Incorporated

7.3 Feature Description

7.3.1 Advanced Power-Save Mode for Light-Load Efficiency

In order to maintain high efficiency over the entire load current range, the converter reduces its switching frequency as the load current decreases. The advanced power-save mode controls the switching frequency using a voltage-controlled oscillator (VCO). The VCO frequency is proportional to the inductor peak current, with a lower frequency limit of 20 kHz; but in typical applications the frequency does not go below 100 kHz. This avoids disturbance of the audio band and minimizes audible noise coming from the ceramic input and output capacitors. By maintaining a controlled switching frequency, potential EMI is minimized. This is especially important when using the device in mobile phones. See Figure 24 for typical switching frequency versus load current. For zero load an internal shunt regulator ensures stable output voltage regulation.

7.3.2 Buck-Boost Mode Operation

Buck-boost mode operation allows the input voltage to be higher or lower than the output voltage. This mode allows the use of batteries and supply voltages that are above the positive output voltage.

7.3.3 Inherently Good Line-Transient Regulation

The SIMO regulator achieves inherently good line-transient response when operating in discontinuous conduction mode (DCM), as shown in Figure 14 and Figure 15. In DCM, the current delivered to the output is determined by the peak value and slope of the inductor current. This is illustrated in Figure 7, where the average output current, shown by the shaded area, is the same for different input voltages. Because the converter uses peak-current-mode control, the peak current is fixed as long as the load current is fixed. The falling slope of the inductor current is given by the difference between the positive and negative output voltages and the inductor value; it is independent of the input voltage. As a result, any change in input voltage changes the converter duty cycle but not the peak value or slope of the inductor current when discharging. The average output current, given by the area A (Figure 7), therefore remains constant over any input voltage variation. Entering continuous conduction mode (CCM) linearly decreases the line-transient performance; however, the line-transient response in CCM is still as good as any standard current-mode switching converter.

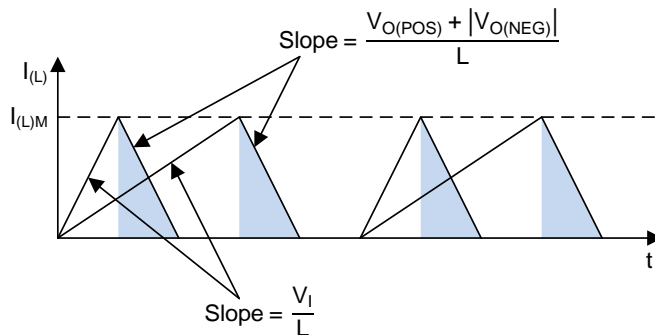


Figure 7. Inherently Good Line-Transient Regulation

The following formulas describe the operation of the TPS65135 device when operating in CCM with equal positive and negative output currents. The converter always sees the sum V_O of the magnitude of the positive and negative output voltages, as given by

$$V_O = V_{O(POS)} + |V_{O(NEG)}|$$

where

- $V_{O(POS)}$ is the positive output voltage
- and $V_{O(NEG)}$ is the negative output voltage.

(1)

The converter duty cycle is calculated using the efficiency estimation from datasheet curves or from real application measurements. A value of 70% for the efficiency η is a good starting assumption for most applications.

Feature Description (continued)

$$D = \frac{V_O}{\eta V_I + V_O}$$

where

- D is the duty cycle of Q2
- and η is the converter efficiency. (2)

Now the output current for entering CCM can be calculated. The switching frequency can be obtained from the data sheet graphs. A frequency of 1.5 MHz is a good assumption for these calculations.

$$I_{O(\text{CCM})} = \frac{V_O(1-D)^2}{2fL}$$

where

- $I_{O(\text{CCM})}$ is the value of output current at which continuous conduction starts;
- f is the converter switching frequency;
- and L is the inductance connected between the L1 and L2 pins. (3)

The inductor ripple current when operating in CCM can also be calculated

$$I_{(L)(\text{PP})} = \frac{DV_I}{fL}$$

where

- $I_{(L)(\text{PP})}$ is the peak-to-peak (that is, ripple) inductor current. (4)

Finally, the converter switch peak current can be calculated

$$I_{(L)M} = \frac{I_O}{1-D} + \frac{I_{(L)(\text{PP})}}{2}$$

where

- $I_{(L)M}$ is the peak (that is, maximum) inductor current. (5)

7.3.4 Overvoltage Protection

The device monitors the positive and negative output voltages and reduces the current limit when either (or both) of the output voltages exceeds its overvoltage protection threshold. The positive output voltage is clamped to 7 V and the negative output voltage to -7.6 V.

7.3.5 Short-Circuit Protection

Both outputs are protected against short circuits either to ground or to the other output. The device's switching frequency and current limit are reduced in case of a short circuit.

7.3.6 Soft-Start Operation

The device increases the current limit during soft-start operation to avoid high inrush currents during start up. The current limit typically ramps up to its maximum value within 100 μ s.

Feature Description (continued)

7.3.7 Output-Current Mismatch

The device operates best when the current of the positive output is similar to the current of the negative output. However, the device is able to regulate an output current mismatch of up to 50% (See [Figure 26](#) for typically allowed currents, only 50% mismatch is specified). If the output-current mismatch becomes much larger one of the outputs goes out of regulation and finally the device shuts down. In case of zero load of one output the other output can support up to 5 mA. The device automatically recovers when the mismatch is reduced. The formula below can be used to calculate the maximum supported current mismatch.

$$0.5 \leq \frac{|I_{O(POS)}|}{|I_{O(NEG)}|} \leq 2 \quad (6)$$

7.3.8 Setting the Output Voltages

The output voltages are set by the three feedback resistors R1, R2, and R3 ([Figure 8](#)). R1 and R2 set the positive output voltage $V_{O(POS)}$ and R2 and R3 set the negative output voltage $V_{O(NEG)}$. To reduce the circuit's sensitivity to noise, it is recommended to choose R2 so that a current of at least 10 μA flows through the feedback resistors. [Equation 7](#) can be used to calculate a suitable value for R2.

$$R2 = \frac{V_{ref1}}{I_{(R2)}} = \frac{1.24 \text{ V}}{10 \mu\text{A}} = 124 \text{ k}\Omega \quad (7)$$

The positive output voltage $V_{O(POS)}$ is given by

$$V_{O(POS)} = V_{ref1} \left(1 + \frac{R1}{R2} \right) \quad (8)$$

The negative output voltage $V_{O(NEG)}$ is given by

$$V_{O(NEG)} = -V_{ref1} \left(\frac{R3}{R2} \right) \quad (9)$$

7.4 Device Functional Modes

7.4.1 Operation with $2.5 \text{ V} \leq V_I \leq 5.5 \text{ V}$

The recommended input supply voltage is 2.5 V to 5.5 V. Within this range the device operates normally and achieves its specified performance.

7.4.2 Operation with $V_I < 2.5 \text{ V}$

The recommended minimum input supply voltage is 2.5 V. The device continues to operate with input supply voltages lower than 2.5 V, however, its performance is not specified. The device does not operate with input supply voltages below the UVLO threshold.

7.4.3 Operation with $V_I > 5.5 \text{ V}$

The recommended maximum input supply voltage is 5.5 V. As long as the absolute maximum voltage is not exceeded, the device will not be damaged by input supply voltages greater than 5.5 V, however, its performance is not specified.

Device Functional Modes (continued)

7.4.4 Operation with EN

When EN = L the device is disabled and switching is inhibited. When EN = H the device is enabled and its start-up sequence begins. If the EN pin is left floating an internal 500-k Ω resistor pulls this pin to ground.

8 Application and Implementation

NOTE

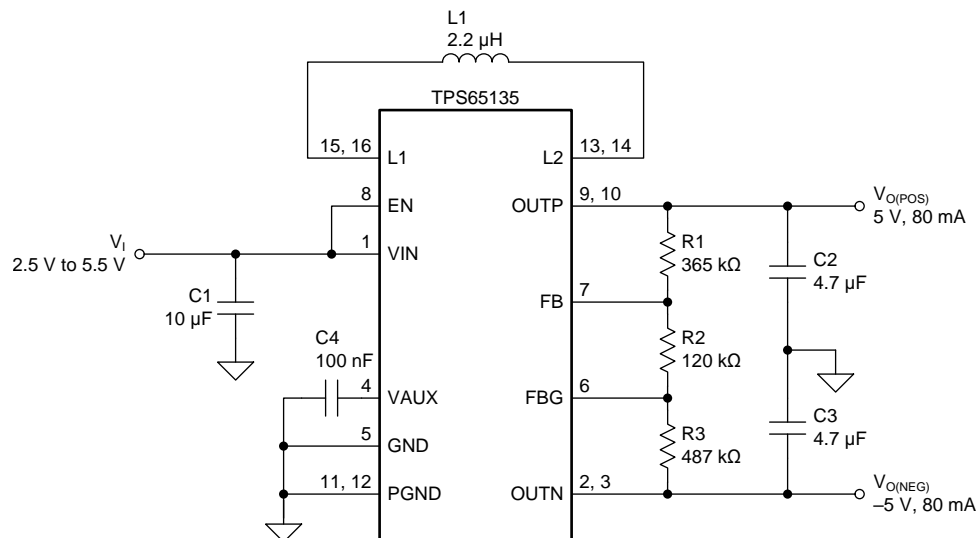
Information in the following applications sections is not part of the TI component specification, and TI does not warrant its accuracy or completeness. TI's customers are responsible for determining suitability of components for their purposes. Customers should validate and test their design implementation to confirm system functionality.

8.1 Application Information

The TPS65135 device can be used to generate split-rail supplies from input supply voltages in the range 2.5 V to 5.5 V and has been optimized for use with 3.3-V rails of single-cell Li-ion batteries. It can generate positive output voltages up to 6 V and negative voltages down to -7 V with buck-boost action (i.e. the input supply voltage may be above or below the positive output voltage), as long as the output current mis-match is 50% or less. Both outputs are controlled by the EN pin: a high logic level enables both outputs, and a low logic level disables them. An integrated UVLO function disables the device when the input supply voltage is too low for proper operation.

8.2 Typical Application

Figure 8 shows a typical application for a ± 5 -V AMOLED display supply.



Copyright © 2017, Texas Instruments Incorporated

Figure 8. Standard Application ± 5 -V Supply

8.2.1 Design Requirements

Table 2 shows the design requirements for a ± 5 -V AMOLED supply application used as an example to illustrate the design process.

Typical Application (continued)

Table 2. Design Parameters

PARAMETER	SYMBOL	EXAMPLE VALUE
Input Supply Voltage Range	V_I	2.5 V to 5.5 V
Positive Output Voltage	$V_{O(POS)}$	5 V
Negative Output Voltage	$V_{O(NEG)}$	-5 V
Maximum Positive Output Current	$I_{O(POS)} \text{ max}$	80 mA
Maximum Negative Output Current	$I_{O(NEG)} \text{ max}$	-80 mA

8.2.2 Detailed Design Procedure

8.2.2.1 Choosing a Suitable Inductor

The TPS65135 device is internally compensated and operates best with a 2.2- μH inductor. For this type of converter, selection of the inductor is a key element in the design process because it has a big impact on the efficiency, the line and load transient response, and the maximum output current the device is able to deliver. Because the inductor ripple current is fairly large in the SIMO topology, the inductor core losses largely determine converter efficiency. As a result, an inductor with a relatively large dc winding resistance (DCR) but low core losses can often achieve higher converter efficiencies than other inductors with lower DCR but higher core losses.

As previously described, the converter's line transient response is highest when the converter operates in DCM, and since larger inductor values cause the converter to enter CCM operation at lower load currents, smaller inductor values give the best line transient response. The formula to calculate the output current at which the converter enters CCM operation is shown in Equation 3. The inductors listed in Table 3 achieve a good overall converter efficiency while having a low height. The first two TOKO inductors achieve the highest efficiency (almost identical) followed by the LPS3008. The best compromise between efficiency and inductor size is given by the XFL2006 inductor. The inductor saturation current should typically be 1 A or higher, however, if the output current required by the application is low, inductors with smaller saturation current ratings may be considered.

Table 3. Inductor Selection

INDUCTOR VALUE	COMPONENT SUPPLIER	DIMENSIONS in mm	$I_{\text{sat}} / \text{DCR}$
2.2 μH	TOKO DFE252010C	2.5 x 2 x 1	1.9 A / 130 m Ω
	TOKO DFE252012C	2.5 x 2 x 1.2	2.2 A / 90 m Ω
	Coilcraft XFL2006-222	2 x 1.9 x 0.6	0.8 A / 278 m Ω
	Coilcraft LPS3008-222	3 x 3 x 0.8	1.1 A / 175 m Ω
	Samsung CIG2MW2R2NNE	2 x 1.6 x 1	1.2 A / 110 m Ω
	TOKO FDSE0312-2R2	3.3 x 3.3 x 1.2	1.2 A / 160 m Ω
	ABCO LPF3010T-2R2	2.8 x 2.8 x 1	1.0 A / 100 m Ω
	Maruwa CXFU0208-2R2	2.65 x 2.65 x 0.8	0.85 A / 185 m Ω

8.2.2.2 Choosing Suitable Input and Output Capacitors

The TPS65135 device typically requires a 10- μF ceramic input capacitor. Larger values can be used to lower the input voltage ripple. Table 4 lists capacitors suitable for use on the TPS65135 input.

Table 4. Input Capacitor Selection

CAPACITOR	COMPONENT SUPPLIER	SIZE
10 μF / 6.3V	Murata GRM188R60J106ME84D	0603
10 μF / 6.3 V	Taiyo Yuden JMK107BJ106	0603

A 4.7- μ F output capacitor is generally sufficient for most applications, but larger values can be used as well for improved load- and line-transient response at higher load currents. The capacitors of [Table 5](#) have been found to work well with the TPS65135 device.

Table 5. Output Capacitor Selection

CAPACITOR	COMPONENT SUPPLIER	SIZE
10 μ F / 6.3 V	Murata GRM188R60J106ME84D	0603
4.7 μ F / 10 V	Taiyo Yuden LMK107BJ475	0603
10 μ F / 6.3 V	Taiyo Yuden JMK107BJ106	0603

8.2.2.3 Choosing Suitable Feedback Resistors

[Equation 7](#) can be used to calculate a suitable value for R2, so that the recommended current of $\approx 10 \mu$ A flows through the feedback resistors.

The value of R1 can be calculated by rearranging [Equation 7](#), so that

$$R1 = R2 \left(\frac{V_{O(POS)}}{V_{ref1}} - 1 \right) \quad (10)$$

Inserting $R2 = 120 \text{ k}\Omega$, $V_{ref1} = 1.24 \text{ V}$ and $V_{O(POS)} = 5 \text{ V}$ into [Equation 10](#), we get

$$R1 = 120 \text{ k}\Omega \left(\frac{5 \text{ V}}{1.24 \text{ V}} - 1 \right) = 363.9 \text{ k}\Omega \quad (11)$$

The closest 1%-tolerance standard value is 365 k Ω , which will generate a nominal output voltage of 5.012 V.

The value of R3 can be calculated by rearranging [Equation 9](#), so that

$$R3 = R2 \left(\frac{|V_{O(NEG)}|}{V_{ref1}} \right) \quad (12)$$

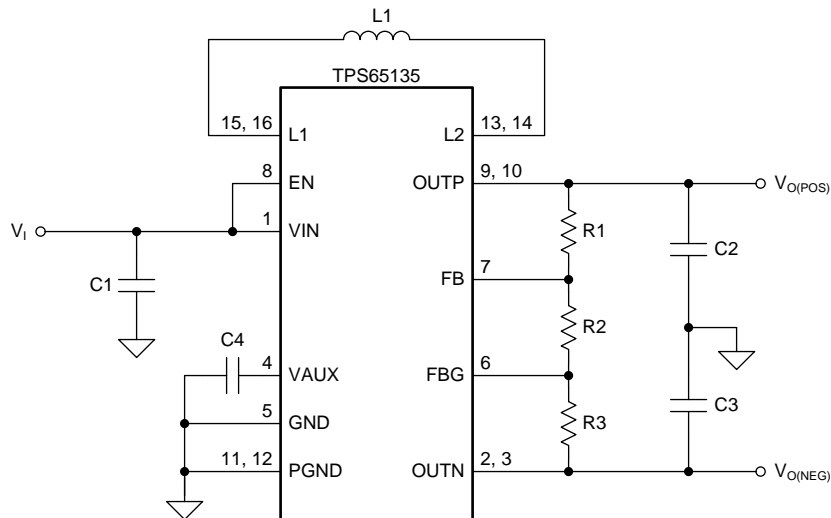
Inserting $R2 = 120 \text{ k}\Omega$, $V_{ref1} = 1.24 \text{ V}$ and $V_{O(NEG)} = -5 \text{ V}$ into [Equation 12](#), we get

$$R3 = 120 \text{ k}\Omega \left(\frac{5 \text{ V}}{1.24 \text{ V}} \right) = 483.9 \text{ k}\Omega \quad (13)$$

The closest 1%-tolerance standard value is 487 k Ω , which will generate a nominal output voltage of -5.032 V .

8.2.2.4 Measurement Circuit

The following application curves were obtained using the circuit shown in [Figure 9](#) and the external components listed in [Table 6](#).



Copyright © 2017, Texas Instruments Incorporated

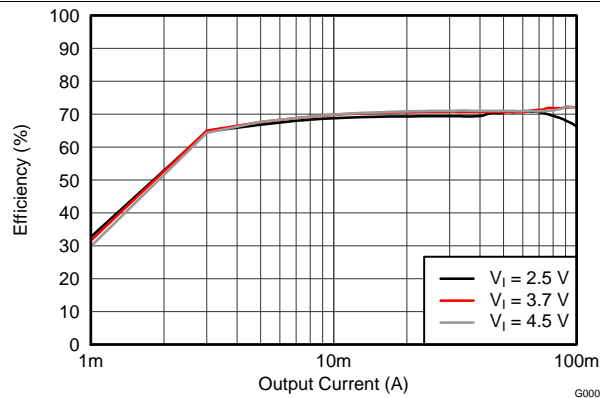
Figure 9. Measurement Circuit

Table 6. Component List

Reference	Description	Manufacturer and Part Number
C1, C2, C3	10 μ F, 6.3 V, 0603, X5R, ceramic	Murata, GRM188R60J106ME84D
C4	100 nF, 10 V, 0603, X7R, ceramic	Murata, GRM188R71H104KA93D
L1	2.2 μ H, 2.2 A, 90 m Ω , 2.5 mm \times 2.0 mm \times 1.2 mm	Toko, 1239AS-H-2R2M
R1	Depending on the output voltage, 1%, (all measurements with \pm 5 V output voltage uses 365 k Ω)	
R2	Depending on the output voltage, 1%, (all measurements with \pm 5 V output voltage uses 120 k Ω)	
R3	Depending on the output voltage, 1%, (all measurements with \pm 5 V output voltage uses 487 k Ω)	
U1	TPS65135RTE	Texas Instruments

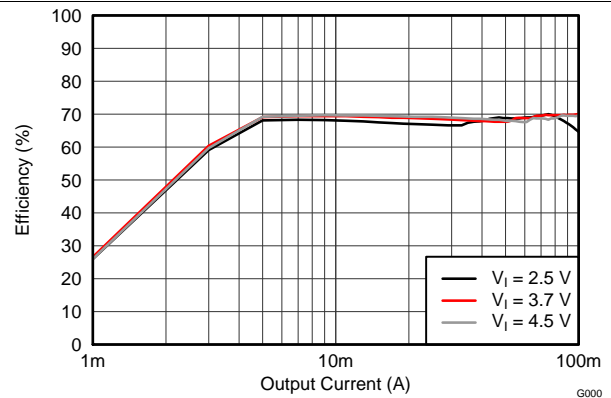
8.2.3 Application Curves

In the following curves $V_I = 3.7\text{ V}$, $V_{O(POS)} = 5\text{ V}$, $V_{O(NEG)} = -5\text{ V}$ unless otherwise noted. Where the symbol I_O is used, it implies that $I_{O(POS)} = |I_{O(NEG)}|$. All measurements at $T_A = 25^\circ\text{C}$ unless otherwise noted.



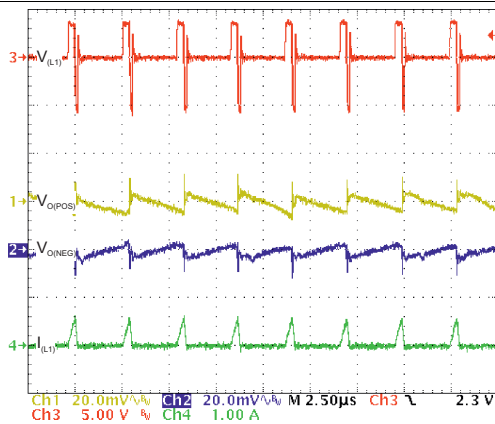
L1 = 2.2 µH

Figure 10. Efficiency vs Load Current



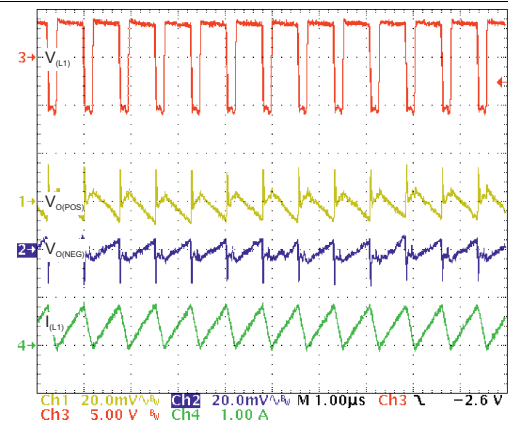
L1 = 4.7 µH

Figure 11. Efficiency vs Load Current



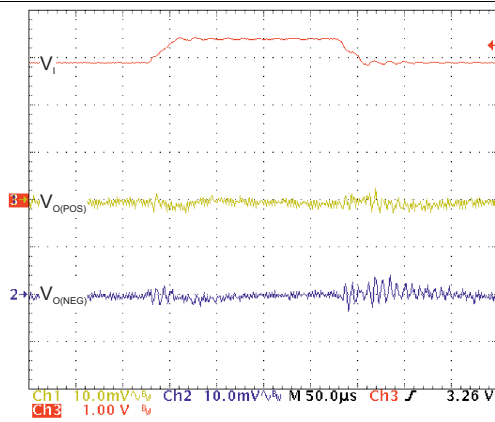
$I_O = 10\text{ mA}$

Figure 12. Operation at Light Load Current (DCM)



$I_O = 80\text{ mA}$

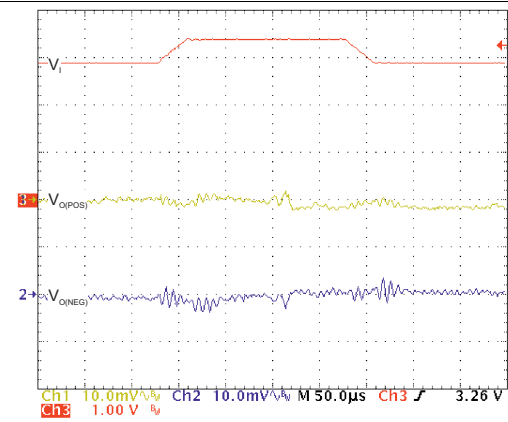
Figure 13. Operation at High Load Current (CCM)



$I_O = 10\text{ mA}$

$V_I = 2.9\text{ V}, 3.4\text{ V}$

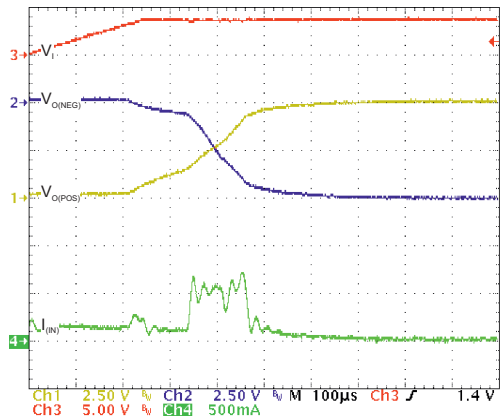
Figure 14. Line Transient Response



$I_O = 50\text{ mA}$

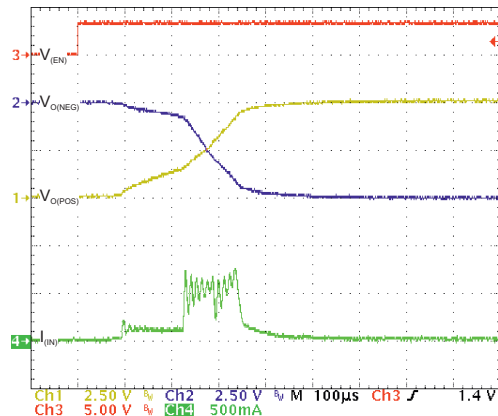
$V_I = 2.9\text{ V}, 3.4\text{ V}$

Figure 15. Line Transient Response



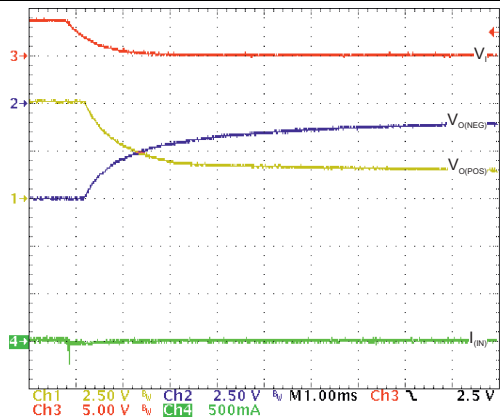
$I_O = 0 \text{ mA}$

Figure 16. Start Up (V_I Rising)



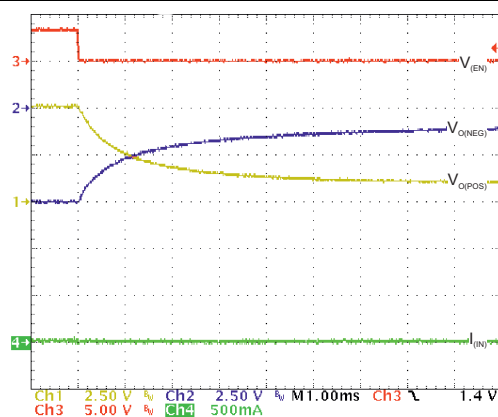
$I_O = 0 \text{ mA}$

Figure 17. Start Up ($V_{(EN)}$ Rising)



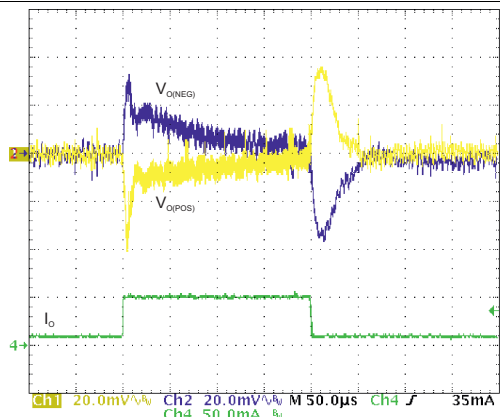
$I_O = 0 \text{ mA}$

Figure 18. Shut Down – (V_I Falling)



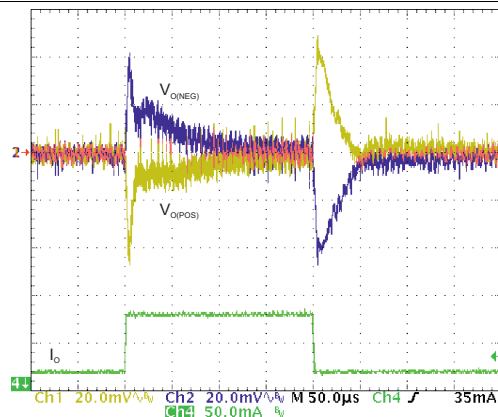
$I_O = 0 \text{ mA}$

Figure 19. Shut Down ($V_{(EN)}$ Falling)



$I_O = 10 \text{ mA}, 50 \text{ mA}$

Figure 20. Load Transient Response



$I_O = 20 \text{ mA}, 80 \text{ mA}$

Figure 21. Load Transient Response

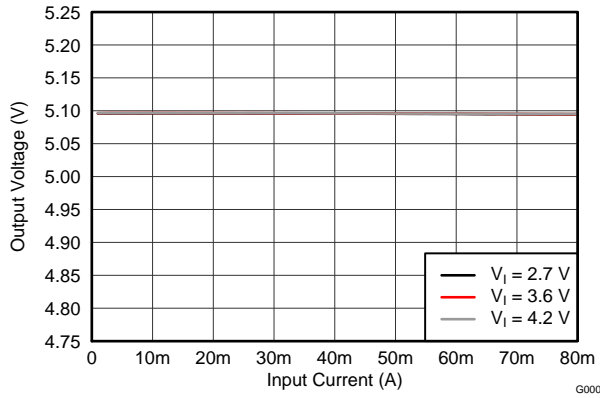


Figure 22. Positive Output Load Regulation

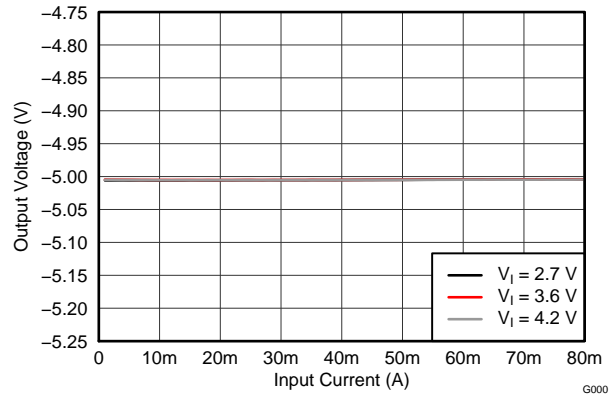


Figure 23. Negative Output Load Regulation

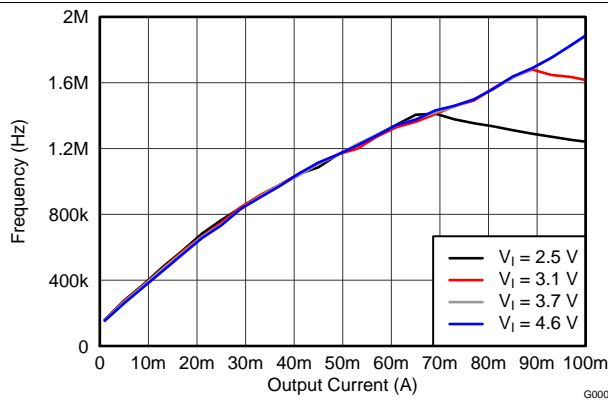


Figure 24. Switching Frequency vs Load Current

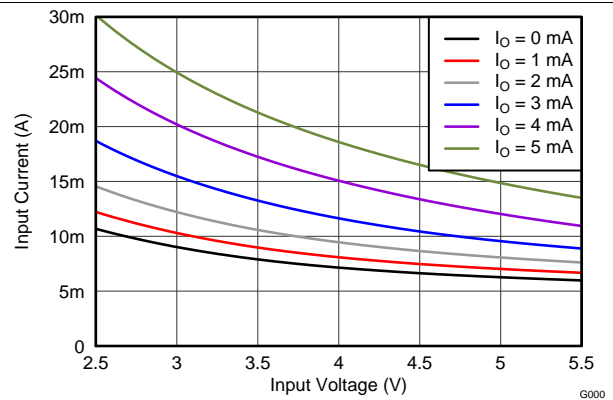


Figure 25. Input Current vs Input Voltage

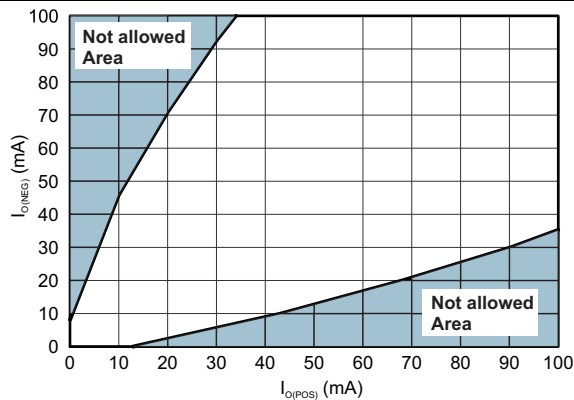


Figure 26. Output Current Mismatch

9 Power Supply Recommendations

The TPS65135 device is designed to operate from an input supply voltage in the range 2.5 V to 5.5 V. If the input supply is located more than a few centimeters from the device additional bulk capacitance may be required. The 10- μ F shown in the schematics in this data sheet are typical for this function.

10 Layout

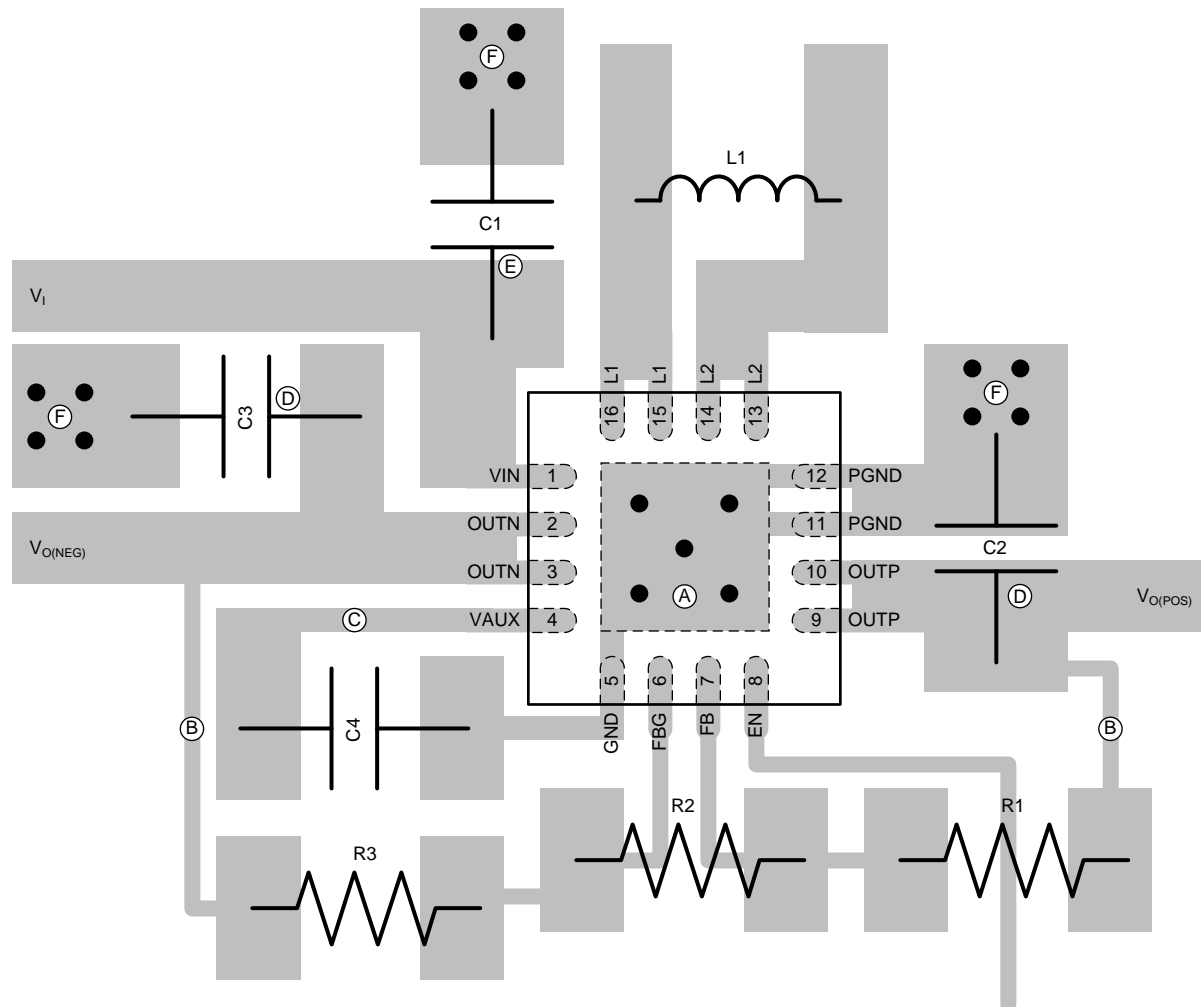
10.1 Layout Guidelines

No PCB layout is perfect, and compromises are always necessary. However, the basic principles listed below (in order of importance) go a long way to achieving the full performance of the TPS65135 device.

- If possible, route discontinuous switching currents on the top layer, using short, wide traces to minimize stray inductance and resistance. For the TPS65135 device, the current flowing into the VIN, L1, L2, VPOS, VNEG and PGND pins is discontinuous. In the example layout below, vias are used to connect discontinuous return currents to the ground plane, as it is considered a slightly better approach with this device than forcing all currents to flow on the top layer.
- Place C1 and C4 as close as possible to the VIN and AVIN pins respectively.
- Place C2 and C3 as close as possible to the VPOS and VNEG pins respectively.
- Place L1 as close as possible to the L1 and L2 pins.
- Use a copper pour (preferably on layer 2) as a thermal spreader and connect it to the exposed thermal pad using the maximum number of thermal vias (see packaging information for more information on the recommended thermal vias).
- The copper pour described above can be used as a ground plane if it is not possible to route power ground signals on the top layer.

10.2 Layout Example

Figure 27 shows an example PCB layout based on the above principles.



- (A) Multiple vias used to connect thermal pad to copper pour on bottom or inner layer to conduct heat away and minimize loop area.
- (B) Output voltages sensed directly at output capacitors. Sensing traces kept separate from high-current-carrying traces.
- (C) C4 placed close to VAUX and GND pins. Traces connecting to C4 do not need to be especially wide, because they do not conduct high current.
- (D) C2 and C3 placed close to OUTP and OUTN pins and connected with wide traces to minimize parasitic inductance.
- (E) C1 placed close to VIN pin and connected with very wide traces to minimize parasitic inductance.
- (F) PGND connected to copper pour ground plane on bottom or inner layer to minimize loop area.

Figure 27. PCB Layout Example

11 器件和文档支持

11.1 器件支持

11.1.1 Third-Party Products Disclaimer

TI'S PUBLICATION OF INFORMATION REGARDING THIRD-PARTY PRODUCTS OR SERVICES DOES NOT CONSTITUTE AN ENDORSEMENT REGARDING THE SUITABILITY OF SUCH PRODUCTS OR SERVICES OR A WARRANTY, REPRESENTATION OR ENDORSEMENT OF SUCH PRODUCTS OR SERVICES, EITHER ALONE OR IN COMBINATION WITH ANY TI PRODUCT OR SERVICE.

11.2 接收文档更新通知

如需接收文档更新通知，请访问 www.ti.com.cn 网站上的器件产品文件夹。点击右上角的提醒我 (Alert me) 注册后，即可每周定期收到已更改的产品信息。有关更改的详细信息，请查阅已修订文档中包含的修订历史记录。

11.3 社区资源

The following links connect to TI community resources. Linked contents are provided "AS IS" by the respective contributors. They do not constitute TI specifications and do not necessarily reflect TI's views; see TI's [Terms of Use](#).

TI E2E™ Online Community *TI's Engineer-to-Engineer (E2E) Community*. Created to foster collaboration among engineers. At e2e.ti.com, you can ask questions, share knowledge, explore ideas and help solve problems with fellow engineers.

Design Support *TI's Design Support* Quickly find helpful E2E forums along with design support tools and contact information for technical support.

11.4 商标

E2E is a trademark of Texas Instruments.
All other trademarks are the property of their respective owners.

11.5 静电放电警告



这些装置包含有限的内置 ESD 保护。存储或装卸时，应将导线一起截短或将装置放置于导电泡棉中，以防止 MOS 门极遭受静电损伤。

11.6 Glossary

[SLYZ022](#) — *TI Glossary*.

This glossary lists and explains terms, acronyms, and definitions.

12 机械、封装和可订购信息

以下页中包括机械、封装和可订购信息。这些信息是针对指定器件可提供的最新数据。这些数据会在无通知且不对本文档进行修订的情况下发生改变。欲获得该数据表的浏览器版本，请查阅左侧的导航栏。

TAPE AND REEL INFORMATION

QUADRANT ASSIGNMENTS FOR PIN 1 ORIENTATION IN TAPE


*All dimensions are nominal

Device	Package Type	Package Drawing	Pins	SPQ	Reel Diameter (mm)	Reel Width W1 (mm)	A0 (mm)	B0 (mm)	K0 (mm)	P1 (mm)	W (mm)	Pin1 Quadrant
TPS65135RTER	WQFN	RTE	16	3000	330.0	12.4	3.3	3.3	1.1	8.0	12.0	Q2

TAPE AND REEL BOX DIMENSIONS


*All dimensions are nominal

Device	Package Type	Package Drawing	Pins	SPQ	Length (mm)	Width (mm)	Height (mm)
TPS65135RTER	WQFN	RTE	16	3000	367.0	367.0	35.0

MECHANICAL DATA

RTE (S-PWQFN-N16)

PLASTIC QUAD FLATPACK NO-LEAD



4205254/D 01/11

- NOTES:
- A. All linear dimensions are in millimeters. Dimensioning and tolerancing per ASME Y14.5M-1994.
 - B. This drawing is subject to change without notice.
 - C. Quad Flatpack, No-leads (QFN) package configuration.
 -  The package thermal pad must be soldered to the board for thermal and mechanical performance. See the Product Data Sheet for details regarding the exposed thermal pad dimensions.
 - E. Falls within JEDEC MO-220.

THERMAL PAD MECHANICAL DATA

RTE (S-PWQFN-N16)

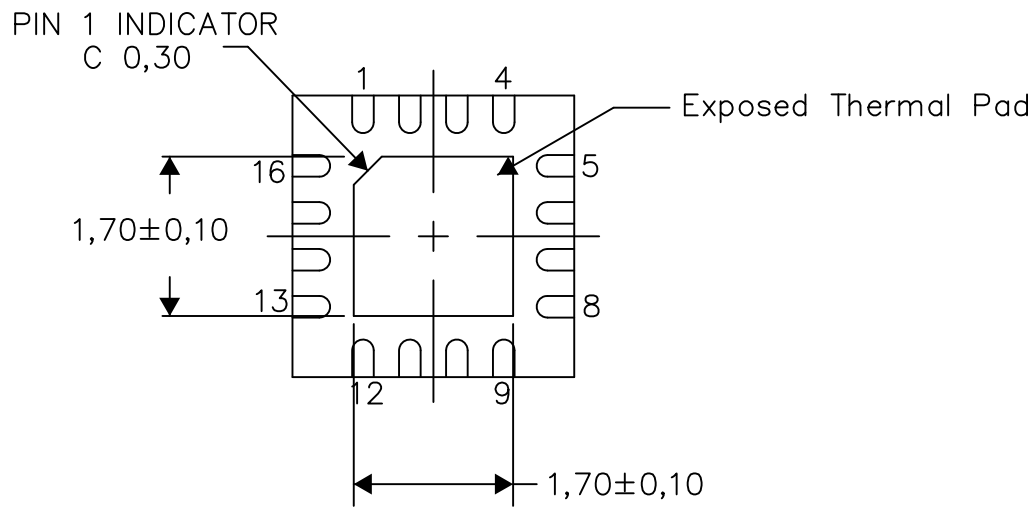
PLASTIC QUAD FLATPACK NO-LEAD

THERMAL INFORMATION

This package incorporates an exposed thermal pad that is designed to be attached directly to an external heatsink. The thermal pad must be soldered directly to the printed circuit board (PCB). After soldering, the PCB can be used as a heatsink. In addition, through the use of thermal vias, the thermal pad can be attached directly to the appropriate copper plane shown in the electrical schematic for the device, or alternatively, can be attached to a special heatsink structure designed into the PCB. This design optimizes the heat transfer from the integrated circuit (IC).

For information on the Quad Flatpack No-Lead (QFN) package and its advantages, refer to Application Report, QFN/SON PCB Attachment, Texas Instruments Literature No. SLUA271. This document is available at www.ti.com.

The exposed thermal pad dimensions for this package are shown in the following illustration.

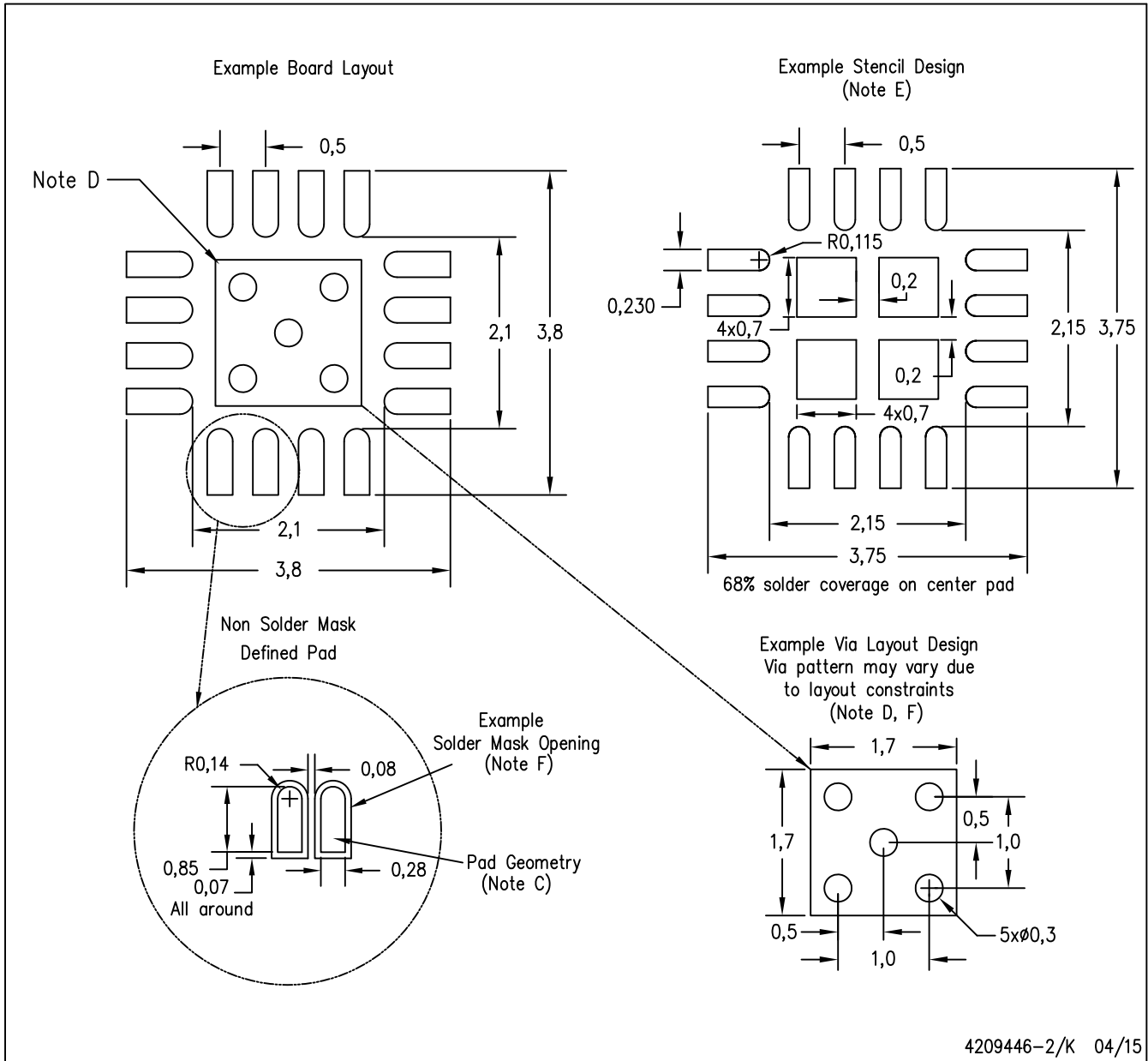


Bottom View

Exposed Thermal Pad Dimensions

4206446-3/U 08/15

NOTE: A. All linear dimensions are in millimeters



- NOTES:
- All linear dimensions are in millimeters.
 - This drawing is subject to change without notice.
 - Publication IPC-7351 is recommended for alternate designs.
 - This package is designed to be soldered to a thermal pad on the board. Refer to Application Note, Quad Flat-Pack Packages, Texas Instruments Literature No. SLUA271, and also the Product Data Sheets for specific thermal information, via requirements, and recommended board layout. These documents are available at www.ti.com <<http://www.ti.com>>.
 - Laser cutting apertures with trapezoidal walls and also rounding corners will offer better paste release. Customers should contact their board assembly site for stencil design recommendations. Refer to IPC 7525 for stencil design considerations.
 - Customers should contact their board fabrication site for minimum solder mask web tolerances between signal pads.

重要声明

德州仪器 (TI) 公司有权按照最新发布的 JESD46 对其半导体产品和服务进行纠正、增强、改进和其他修改，并不再按最新发布的 JESD48 提供任何产品和服务。买方在下订单前应获取最新的相关信息，并验证这些信息是否完整且是最新的。

TI 公布的半导体产品销售条款 (<http://www.ti.com/sc/docs/stdterms.htm>) 适用于 TI 已认证和批准上市的已封装集成电路产品的销售。另有其他条款可能适用于其他类型 TI 产品及服务的使用或销售。

复制 TI 数据表上 TI 信息的重要部分时，不得变更该等信息，且必须随附所有相关保证、条件、限制和通知，否则不得复制。TI 对该等复制文件不承担任何责任。第三方信息可能受到其它限制条件的制约。在转售 TI 产品或服务时，如果存在对产品或服务参数的虚假陈述，则会失去相关 TI 产品或服务的明示或暗示保证，且构成不公平的、欺诈性商业行为。TI 对此类虚假陈述不承担任何责任。

买方和在系统中整合 TI 产品的其他开发人员（总称“设计人员”）理解并同意，设计人员在设计应用时应自行实施独立的分析、评价和判断，且应全权负责并确保应用的安全性，及设计人员的应用（包括应用中使用的 TI 产品）应符合所有适用的法律法规及其他相关要求。设计人员就自己设计的应用声明，其具备制订和实施下列保障措施所需的一切必要专业知识，能够 (1) 预见故障的危险后果，(2) 监视故障及其后果，以及 (3) 降低可能导致危险的故障几率并采取适当措施。设计人员同意，在使用或分发包含 TI 产品的任何应用前，将彻底测试该等应用和该等应用中所用 TI 产品的功能。

TI 提供技术、应用或其他设计建议、质量特点、可靠性数据或其他服务或信息，包括但不限于与评估模块有关的参考设计和材料（总称“TI 资源”），旨在帮助设计人员开发整合了 TI 产品的应用，如果设计人员（个人，或如果是代表公司，则为设计人员的公司）以任何方式下载、访问或使用任何特定的 TI 资源，即表示其同意仅为该等目标，按照本通知的条款使用任何特定 TI 资源。

TI 所提供的 TI 资源，并未扩大或以其他方式修改 TI 对 TI 产品的公开适用的质保及质保免责声明；也未导致 TI 承担任何额外的义务或责任。TI 有权对其 TI 资源进行纠正、增强、改进和其他修改。除特定 TI 资源的公开文档中明确列出的测试外，TI 未进行任何其他测试。

设计人员只有在开发包含该等 TI 资源所列 TI 产品的应用时，才被授权使用、复制和修改任何相关 TI 资源。但并未依据禁止反言原则或其他法律授予您任何 TI 知识产权的任何其他明示或默示的许可，也未授予您 TI 或第三方的任何技术或知识产权的许可，该等许可包括但不限于任何专利权、版权、屏蔽作品权或与美国 TI 产品或服务的任何整合、机器制作、流程相关的其他知识产权。涉及或参考了第三方产品或服务的信息不构成使用此类产品或服务的许可或与其相关的保证或认可。使用 TI 资源可能需要您向第三方获得对该等第三方专利或其他知识产权的许可。

TI 资源系“按原样”提供。TI 兹免除对资源及其使用作出所有其他明确或默示的保证或陈述，包括但不限于对准确性或完整性、产权保证、无屡发故障保证，以及适销性、适合特定用途和不侵犯任何第三方知识产权的任何默认保证。TI 不负责任何申索，包括但不限于因组合产品所致或与之有关的申索，也不为或对设计人员进行辩护或赔偿，即使该等产品组合已列于 TI 资源或其他地方。对因 TI 资源或其使用引起或与之有关的任何实际的、直接的、特殊的、附带的、间接的、惩罚性的、偶发的、从属或惩戒性损害赔偿，不管 TI 是否获悉可能会产生上述损害赔偿，TI 概不负责。

除 TI 已明确指出特定产品已达到特定行业标准（例如 ISO/TS 16949 和 ISO 26262）的要求外，TI 不对未达到任何该等行业标准要求而承担任何责任。

如果 TI 明确宣称产品有助于功能安全或符合行业功能安全标准，则该等产品旨在帮助客户设计和创作自己的符合相关功能安全标准和要求的的应用。在应用内使用产品的行为本身不会配有安全特性。设计人员必须确保遵守适用于其应用的相关安全要求和标准。设计人员不可将任何 TI 产品用于关乎性命的医疗设备，除非已由各方获得授权的管理人员签署专门的合同对此类应用专门作出规定。关乎性命的医疗设备是指出现故障会导致严重身体伤害或死亡的医疗设备（例如生命保障设备、心脏起搏器、心脏除颤器、人工心脏泵、神经刺激器以及植入设备）。此类设备包括但不限于，美国食品药品监督管理局认定为 III 类设备的设备，以及在美国以外的其他国家或地区认定为同等类别设备的所有医疗设备。

TI 可能明确指定某些产品具备某些特定资格（例如 Q100、军用级或增强型产品）。设计人员同意，其具备一切必要专业知识，可以为自己的应用选择适合的产品，并且正确选择产品的风险由设计人员承担。设计人员单方面负责遵守与该等选择有关的所有法律或监管要求。

设计人员同意向 TI 及其代表全额赔偿因其不遵守本通知条款和条件而引起的任何损害、费用、损失和/或责任。

邮寄地址：上海市浦东新区世纪大道 1568 号中建大厦 32 楼，邮政编码：200122
Copyright © 2017 德州仪器半导体技术（上海）有限公司