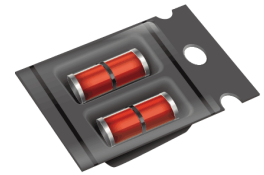


## ■ Features

1. Small size
2. RoHS compliant and halogen-free
3. Fast response time
4. Low electrode capacitance (1pF) and high isolation (100MΩ)



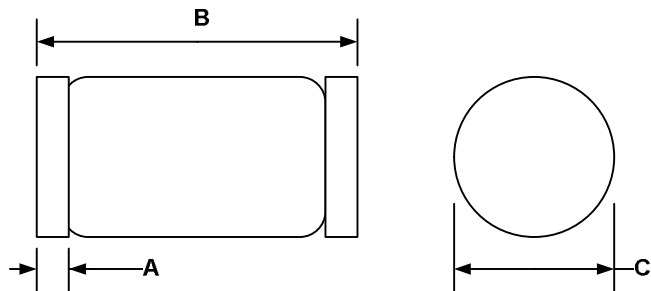
## ■ Recommended Applications

1. Telephone, Fax, Modem
2. Power supplies
3. High frequency signal transmitters/receivers
4. Satellite antenna
5. Radio amplifiers
6. Alarm systems

## ■ Structures and Dimensions

Unit:mm

Item	Spec	Tolerance
A	0.4	0.1
B	5.0	0.5
C	2.8	0.2

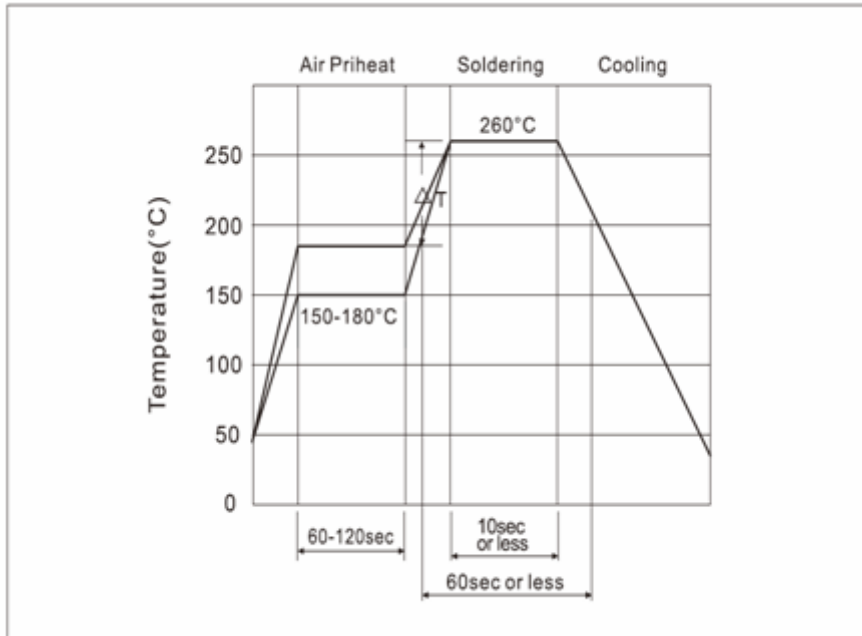


## ■ Electrical Characteristics

Part No.	DC Spark-over Voltage	Impulse Withstanding Voltage Capacity 10x700μs	Impulse Discharge Current 8x20 μ s	Insulation Resistance Min.DC		Capacitance Max
	VS (V)	(KV)	(A)	IR(MΩ) Min	DC(V)	(PF)
GSMD41-141N	140±30%	2	1000	100	50	1.0
GSMD41-181N	180±30%	2	1000	100	50	1.0
GSMD41-201M	200±20%	2	1000	100	100	1.0
GSMD41-301M	300±20%	2	1000	100	100	1.0
GSMD41-401M	400±20%	2	1000	100	250	1.0
GSMD41-501M	500±20%	2	1000	100	250	1.0

■ **Soldering Recommendation**

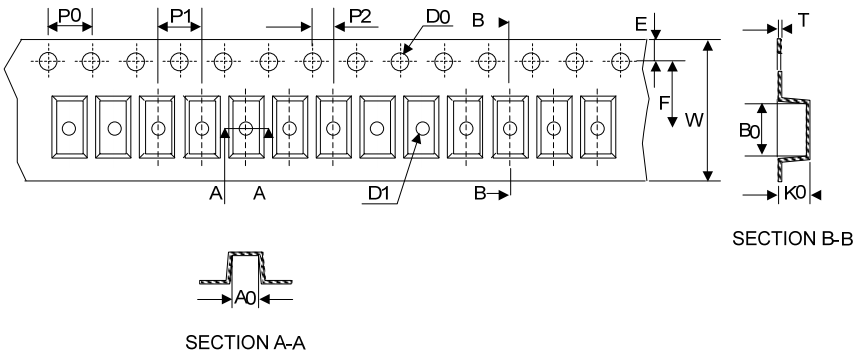
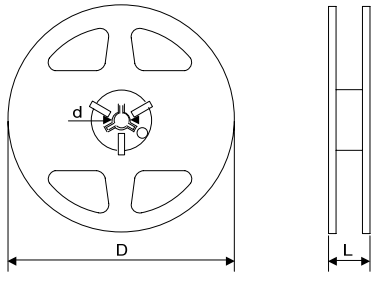
◎ **IR-reflow Soldering Profile**



◎ **Recommended Reworking Conditions with Soldering Iron:**

Item	Conditions
Temperature of Soldering Iron-tip	350±5°C
Soldering Time	3 sec. (max.)

## ■ Packaging

Tape	Symbol	Dimension (mm)	
	W	$12.00 \pm 0.20$	
	P0	$4.00 \pm 0.10$	
	P1	$4.00 \pm 0.10$	
	P2	$2.00 \pm 0.10$	
	D0	$\Phi 1.5 \pm 0.10$	
	D1	$\Phi 1.5 \pm 0.10$	
	E	$1.75 \pm 0.10$	
	F	$5.50 \pm 0.05$	
	A0	$3.00 \pm 0.10$	
	B0	$6.00 \pm 0.10$	
	K0	$3.00 \pm 0.10$	
	T	$0.30 \pm 0.05$	
	<p>Reel</p> 	D	178.0
		d	13.0
L		15.0	
Quantity: 1500PCS			