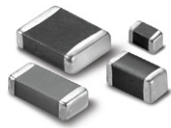


Standard & High Capacitors

Feature

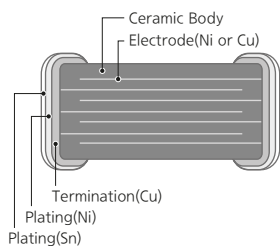
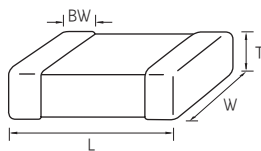


- Wide selection of size : from 0402(Inch) to 2220(Inch)
- Highly reliable tolerance and high speed automatic chip placement on PCBs
- Wide capacitance range
- Highly reliable performance
- Highly resistant termination metal
- Tape & reel for surface mount assembly

Application

- Mobile Phone
- DC-DC Converter
- Tablet devices
- PC (Laptop, Desktop)
- HDD /SSD board
- Display

Structure and Dimensions



| Size Code | EIA Code | Dimension(mm) | | | | |
|-----------|----------|---------------|-----------|------------------|----------------|-----------------|
| | | L | W | T | Thickness Code | BW |
| 05 | 0402 | 1.00±0.05 | 0.50±0.05 | 0.0975±0.0125(*) | L | 0.25±0.075 |
| | | 1.00±0.10 | 0.50±0.05 | 0.19±0.03(*) | X | |
| | | 1.00±0.05 | 0.50±0.05 | 0.30±0.03(*) | 3 | |
| | | 1.00±0.05 | 0.50±0.05 | 0.50±0.05 | 5 | |
| 10 | 0603 | 1.60±0.10 | 0.80±0.10 | 0.50±0.0/-0.1(*) | 5 | 0.30±0.20 |
| | | 1.60±0.10 | 0.80±0.10 | 0.80±0.10 | 8 | |
| 21 | 0805 | 2.00±0.10 | 1.25±0.10 | 0.70±0.10(*) | 7 | 0.50±0.20/-0.30 |
| | | 2.00±0.10 | 1.25±0.10 | 0.80±0.10(*) | 8 | |
| | | 2.00±0.10 | 1.25±0.10 | 0.85±0.10 | C | |
| | | 2.00±0.10 | 1.25±0.10 | 0.90±0.10(*) | 9 | |
| | | 2.00±0.10 | 1.25±0.10 | 1.15±0.10 | M | |
| | | 2.00±0.10 | 1.25±0.10 | 1.25±0.10 | F | |
| | | 2.00±0.15 | 1.25±0.15 | 1.25±0.15 | Q | |
| 31 | 1206 | 3.20±0.20 | 1.60±0.20 | 0.60±0.10(*) | 6 | 0.50±0.30 |
| | | 3.20±0.15 | 1.60±0.15 | 0.85±0.15 | C | |
| | | 3.20±0.20 | 1.60±0.20 | 0.85±0.10(*) | C | |
| | | 3.20±0.20 | 1.60±0.20 | 0.90±0.10(*) | 9 | |
| | | 3.20±0.20 | 1.60±0.20 | 1.10±0.10(*) | E | |
| | | 3.20±0.20 | 1.60±0.20 | 1.15±0.10(*) | M | |
| | | 3.20±0.20 | 1.60±0.20 | 1.15±0.10(*) | P | |
| | | 3.20±0.15 | 1.60±0.15 | 1.25±0.15 | F | |
| 32 | 1210 | 3.20±0.30 | 2.50±0.20 | 0.85±0.10(*) | C | 0.60±0.30 |
| | | 3.20±0.30 | 2.50±0.20 | 0.90±0.10(*) | 9 | |
| | | 3.20±0.30 | 2.50±0.20 | 1.60±0.20 | H | |
| | | 3.20±0.30 | 2.50±0.20 | 1.80±0.20(*) | U | |
| | | 3.20±0.30 | 2.50±0.20 | 2.00±0.20 | I | |
| | | 3.20±0.40 | 2.50±0.30 | 2.50±0.20 | J | |
| 42 | 1808 | 4.50±0.40 | 2.00±0.20 | 1.25±0.20 | F | 0.80±0.30 |
| | | 4.50±0.40 | 2.00±0.20 | 1.40±0.20 | G | |
| | | 4.50±0.40 | 2.00±0.20 | 2.00±0.20 | I | |
| 43 | 1812 | 4.50±0.40 | 3.20±0.30 | 1.25±0.20 | F | 0.80±0.30 |
| | | 4.50±0.40 | 3.20±0.30 | 2.50±0.20 | J | |
| | | 4.50±0.40 | 3.20±0.30 | 3.20±0.30 | L | |
| 55 | 2220 | 5.70±0.40 | 5.00±0.40 | 2.50±0.20 | J | 1.00±0.30 |
| | | 5.70±0.40 | 5.00±0.40 | 3.20±0.30 | L | |

* Mark is only applicable to "L", "F", 12th code in part number.

Standard & High Capacitance Table (C0G)

| Size inch (mm) | Rated Voltage (Vdc) | Capacitance | | | | | | | | | | | | | | | | | | | | | | | | | | | | | | | | | |
|----------------------|---------------------------|-------------|-----|----|----|----|----|----|----|-----|-----|-----|-----|-----|-----|-----|-----|-----|-----|-----|-----|-----|-----|-----|-----|-----|-----|----|----|----|----|----|----|-----|-----|
| | | pF | | | | | | | | | | | | | nF | | | | | | | | | | | | | | | | | | | | |
| | | 0.5 | 1.0 | 10 | 15 | 27 | 33 | 56 | 68 | 120 | 180 | 220 | 270 | 330 | 470 | 560 | 750 | 910 | 1.0 | 1.2 | 1.5 | 1.8 | 2.2 | 3.9 | 4.7 | 6.8 | 8.2 | 10 | 15 | 27 | 33 | 39 | 47 | 68 | 100 |
| 0402 (1005) | 10 | | | | | | | | | | | | | | | | | 1.0 | 1.2 | 1.5 | 1.8 | 2.2 | 3.9 | 4.7 | | | | | | | | | | | |
| | 16 | | | | | | | | | | | | | | | | | 1.0 | 1.2 | 1.5 | 1.8 | 2.2 | 3.9 | 4.7 | 6.8 | 8.2 | 10 | 15 | 27 | 33 | 39 | 47 | 68 | 100 | 120 |
| | 25 | | | | | | | | | | | | | | | | | 1.0 | 1.2 | 1.5 | 1.8 | 2.2 | 3.9 | 4.7 | 6.8 | 8.2 | 10 | 15 | 27 | 33 | 39 | 47 | 68 | 100 | 120 |
| | 50 | | | | | | | | | | | | | | | | | 1.0 | 1.2 | 1.5 | 1.8 | 2.2 | 3.9 | 4.7 | 6.8 | 8.2 | 10 | 15 | 27 | 33 | 39 | 47 | 68 | 100 | 120 |
| 0603 (1608) | 16 | | | | | | | | | | | | | | | | | 1.0 | 1.2 | 1.5 | 1.8 | 2.2 | 3.9 | 4.7 | 6.8 | 8.2 | 10 | 15 | 27 | 33 | 39 | 47 | 68 | 100 | 120 |
| | 25 | | | | | | | | | | | | | | | | | 1.0 | 1.2 | 1.5 | 1.8 | 2.2 | 3.9 | 4.7 | 6.8 | 8.2 | 10 | 15 | 27 | 33 | 39 | 47 | 68 | 100 | 120 |
| | 50 | | | | | | | | | | | | | | | | | 1.0 | 1.2 | 1.5 | 1.8 | 2.2 | 3.9 | 4.7 | 6.8 | 8.2 | 10 | 15 | 27 | 33 | 39 | 47 | 68 | 100 | 120 |
| 0805 (2012) | 25 | | | | | | | | | | | | | | | | | 1.0 | 1.2 | 1.5 | 1.8 | 2.2 | 3.9 | 4.7 | 6.8 | 8.2 | 10 | 15 | 27 | 33 | 39 | 47 | 68 | 100 | 120 |
| | 50 | | | | | | | | | | | | | | | | | 1.0 | 1.2 | 1.5 | 1.8 | 2.2 | 3.9 | 4.7 | 6.8 | 8.2 | 10 | 15 | 27 | 33 | 39 | 47 | 68 | 100 | 120 |
| 1206 (3216) | 16 | | | | | | | | | | | | | | | | | 1.0 | 1.2 | 1.5 | 1.8 | 2.2 | 3.9 | 4.7 | 6.8 | 8.2 | 10 | 15 | 27 | 33 | 39 | 47 | 68 | 100 | 120 |
| | 25 | | | | | | | | | | | | | | | | | 1.0 | 1.2 | 1.5 | 1.8 | 2.2 | 3.9 | 4.7 | 6.8 | 8.2 | 10 | 15 | 27 | 33 | 39 | 47 | 68 | 100 | 120 |
| | 50 | | | | | | | | | | | | | | | | | 1.0 | 1.2 | 1.5 | 1.8 | 2.2 | 3.9 | 4.7 | 6.8 | 8.2 | 10 | 15 | 27 | 33 | 39 | 47 | 68 | 100 | 120 |
| | 100 | | | | | | | | | | | | | | | | | 1.0 | 1.2 | 1.5 | 1.8 | 2.2 | 3.9 | 4.7 | 6.8 | 8.2 | 10 | 15 | 27 | 33 | 39 | 47 | 68 | 100 | 120 |
| 1210 (3225) | 25 | | | | | | | | | | | | | | | | | 1.0 | 1.2 | 1.5 | 1.8 | 2.2 | 3.9 | 4.7 | 6.8 | 8.2 | 10 | 15 | 27 | 33 | 39 | 47 | 68 | 100 | 120 |
| | 50 | | | | | | | | | | | | | | | | | 1.0 | 1.2 | 1.5 | 1.8 | 2.2 | 3.9 | 4.7 | 6.8 | 8.2 | 10 | 15 | 27 | 33 | 39 | 47 | 68 | 100 | 120 |

Standard & High Capacitors

Standard & High Capacitance Table (X5R)

| Size inch (mm) | Rated Voltage (Vdc) | Capacitance | | | | | | | | | | | |
|----------------------|---------------------------|-------------|-----|-----|-----|-----|-----|----|----|----|-----|-----|--|
| | | nF | | | uF | | | | | | | | |
| | | 100 | 220 | 470 | 1.0 | 2.2 | 4.7 | 10 | 22 | 47 | 100 | 220 | |
| 0402 (1005) | 4.0 | | | | | | | | | | | | |
| | 6.3 | | | | | | | | | | | | |
| | 10 | | | | | | | | | | | | |
| | 16 | | | | | | | | | | | | |
| | 25 | | | | | | | | | | | | |
| | 35 | | | | | | | | | | | | |
| 0603 (1608) | 4.0 | | | | | | | | | | | | |
| | 6.3 | | | | | | | | | | | | |
| | 10 | | | | | | | | | | | | |
| | 16 | | | | | | | | | | | | |
| | 25 | | | | | | | | | | | | |
| | 35 | | | | | | | | | | | | |
| | 50 | | | | | | | | | | | | |
| 0805 (2012) | 4.0 | | | | | | | | | | | | |
| | 6.3 | | | | | | | | | | | | |
| | 10 | | | | | | | | | | | | |
| | 16 | | | | | | | | | | | | |
| | 25 | | | | | | | | | | | | |
| | 35 | | | | | | | | | | | | |
| | 50 | | | | | | | | | | | | |
| 1206 (3216) | 6.3 | | | | | | | | | | | 150 | |
| | 10 | | | | | | | | | | | | |
| | 16 | | | | | | | | | | | | |
| | 25 | | | | | | | | | | | | |
| | 35 | | | | | | | | | | | | |
| | 50 | | | | | | | | | | | | |
| 1210 (3225) | 6.3 | | | | | | | | | | | | |
| | 10 | | | | | | | | | | | | |
| | 16 | | | | | | | | | | | | |
| | 25 | | | | | | | | | | | | |
| | 35 | | | | | | | | | | | | |
| | 50 | | | | | | | | | | | | |
| 1812(4532) | 6.3 | | | | | | | | | | | | |
| 2220(5750) | 6.3 | | | | | | | | | | | | |
| | 10 | | | | | | | | | | | | |

Standard & High Capacitance Table (X6S)

| Size inch (mm) | Rated Voltage (Vdc) | Capacitance | | | | | | | | | | |
|----------------------|---------------------------|-------------|-----|-----|-----|-----|-----|----|----|----|-----|--|
| | | nF | | | uF | | | | | | | |
| | | 100 | 220 | 470 | 1.0 | 2.2 | 4.7 | 10 | 22 | 47 | 100 | |
| 0402 (1005) | 2.5 | | | | | | | | | | | |
| | 4.0 | | | | | | | | | | | |
| | 6.3 | | | | | | | | | | | |
| | 10 | | | | | | | | | | | |
| | 25 | | | | | | | | | | | |
| 0603 (1608) | 4.0 | | | | | | | | | | | |
| | 6.3 | | | | | | | | | | | |
| | 10 | | | | | | | | | | | |
| | 16 | | | | | | | | | | | |
| | 25 | | | | | | | | | | | |
| 0805 (2012) | 2.5 | | | | | | | | | | | |
| | 4.0 | | | | | | | | | | | |
| | 6.3 | | | | | | | | | | | |
| | 10 | | | | | | | | | | | |
| | 16 | | | | | | | | | | | |
| | 25 | | | | | | | | | | | |
| 1206 (3216) | 4.0 | | | | | | | | | | | |
| | 6.3 | | | | | | | | | | | |
| | 10 | | | | | | | | | | | |
| | 16 | | | | | | | | | | | |
| | 25 | | | | | | | | | | | |
| 1210 (3225) | 4.0 | | | | | | | | | | | |
| | 6.3 | | | | | | | | | | | |
| | 10 | | | | | | | | | | | |
| | 16 | | | | | | | | | | | |
| | 25 | | | | | | | | | | | |

Standard & High Capacitors

Standard & High Capacitance Table (X7R)

| Size inch (mm) | Rated Voltage (Vdc) | Capacitance | | | | | | | | | | | | |
|----------------------|---------------------------|-------------|-----|-----|-----|-----|-----|-----|-----|-----|-----|----|----|-----|
| | | nF | | | | | uF | | | | | | | |
| | | 47 | 100 | 220 | 330 | 470 | 1.0 | 2.2 | 3.3 | 4.7 | 10 | 22 | 47 | 100 |
| 0402 (1005) | 6.3 | | | | | | X7S | | | | | | | |
| | 10 | | | | | | | | | | | | | |
| | 16 | | | | | | | | | | | | | |
| | 25 | | | | | | | | | | | | | |
| | 50 | | | | | | | | | | | | | |
| 0603 (1608) | 6.3 | | | | | | | | | | X7S | | | |
| | 10 | | | | | | | | | | | | | |
| | 16 | | | | | | | | | | | | | |
| | 25 | | | | | | | | | | | | | |
| | 50 | | | | | | | | | | | | | |
| 0805 (2012) | 6.3 | | | | | | | | | | | | | |
| | 10 | | | | | | | | | | | | | |
| | 16 | | | | | | | | | | | | | |
| | 25 | | | | | | | | | | | | | |
| | 35 | | | | | | | | | | | | | |
| | 50 | | | | | | | | | | | | | |
| 1206 (3216) | 6.3 | | | | | | | | | | | | | |
| | 10 | | | | | | | | | | | | | |
| | 16 | | | | | | | | | | | | | |
| | 25 | | | | | | | | | | | | | |
| | 35 | | | | | | | | | | | | | |
| | 50 | | | | | | | | | | | | | |
| 1210 (3225) | 6.3 | | | | | | | | | | | | | X7T |
| | 10 | | | | | | | | | | | | | |
| | 16 | | | | | | | | | | | | | |
| | 25 | | | | | | | | | | | | | |
| | 35 | | | | | | | | | | | | | |
| | 50 | | | | | | | | | | | | | |

Product Line Up (COG)

■ Size : 1.00 X 0.50mm (inch : 0402)

| Thickness Max. | Rated Voltage | Capacitance | Capacitance Tolerance | Part Number | Thickness Max. | Rated Voltage | Capacitance | Capacitance Tolerance | Part Number | |
|----------------|---------------|-------------|-----------------------|-----------------|----------------|---------------|-----------------|-----------------------|-----------------|-----------------|
| 0.55mm | 10Vdc | 560pF | ±5% | CL05C561JP5NNN□ | 0.55mm | 50Vdc | 2.2pF | ±0.1pF | CL05C2R2BB5NNN□ | |
| | | 16Vdc | 33pF | ±5% | | | CL05C330JO5NNN□ | 2.2pF | ±0.25pF | CL05C2R2CB5NNN□ |
| | 100pF | | ±5% | CL05C101JO5NNN□ | | | 2.4pF | ±0.1pF | CL05C2R4BB5NNN□ | |
| | 150pF | | ±5% | CL05C151JO5NNN□ | | | 2.4pF | ±0.25pF | CL05C2R4CB5NNN□ | |
| | 220pF | | ±5% | CL05C221JO5NNN□ | | | 2.5pF | ±0.1pF | CL05C2R5BB5NNN□ | |
| | 470pF | | ±5% | CL05C471JO5NNN□ | | | 2.5pF | ±0.25pF | CL05C2R5CB5NNN□ | |
| | 1.0nF | | ±5% | CL05C102JO5NNN□ | | | 2.7pF | ±0.1pF | CL05C2R7BB5NNN□ | |
| | 25Vdc | 25Vdc | 10pF | ±0.5pF | | | CL05C100DA5NNN□ | 2.7pF | ±0.25pF | CL05C2R7CB5NNN□ |
| | | | 10pF | ±5% | | | CL05C100JA5NNN□ | 3.0pF | ±0.1pF | CL05C030BB5NNN□ |
| | | | 11pF | ±5% | | | CL05C110JA5NNN□ | 3.0pF | ±0.25pF | CL05C030CB5NNN□ |
| | | | 12pF | ±5% | | | CL05C120JA5NNN□ | 3.3pF | ±0.1pF | CL05C3R3BB5NNN□ |
| | | | 13pF | ±5% | | | CL05C130JA5NNN□ | 3.3pF | ±0.25pF | CL05C3R3CB5NNN□ |
| | | | 15pF | ±5% | | | CL05C150JA5NNN□ | 3.5pF | ±0.25pF | CL05C3R5CB5NNN□ |
| | | | 18pF | ±2% | | | CL05C180GA5NNN□ | 3.6pF | ±0.25pF | CL05C3R6CB5NNN□ |
| | | | 20pF | ±5% | | | CL05C200JA5NNN□ | 3.9pF | ±0.1pF | CL05C3R9BB5NNN□ |
| | | | 22pF | ±5% | | | CL05C220JA5NNN□ | 3.9pF | ±0.25pF | CL05C3R9CB5NNN□ |
| | | | 27pF | ±2% | | | CL05C270GA5NNN□ | 4.0pF | ±0.1pF | CL05C040BB5NNN□ |
| | | | 27pF | ±5% | | | CL05C270JA5NNN□ | 4.0pF | ±0.25pF | CL05C040CB5NNN□ |
| | | | 33pF | ±5% | | | CL05C330JA5NNN□ | 4.3pF | ±0.25pF | CL05C4R3CB5NNN□ |
| | | | 39pF | ±5% | | | CL05C390JA5NNN□ | 4.7pF | ±0.1pF | CL05C4R7BB5NNN□ |
| | | | 43pF | ±5% | | | CL05C430JA5NNN□ | 4.7pF | ±0.25pF | CL05C4R7CB5NNN□ |
| | | | 47pF | ±5% | | | CL05C470JA5NNN□ | 4.7pF | ±0.5pF | CL05C4R7DB5NNN□ |
| | | | 68pF | ±5% | | | CL05C680JA5NNN□ | 5.0pF | ±0.1pF | CL05C050BB5NNN□ |
| | | | 82pF | ±5% | | | CL05C820JA5NNN□ | 5.0pF | ±0.25pF | CL05C050CB5NNN□ |
| | | | 91pF | ±5% | | | CL05C910JA5NNN□ | 5.0pF | ±0.5pF | CL05C050DB5NNN□ |
| | | | 100pF | ±5% | | | CL05C101JA5NNN□ | 5.1pF | ±0.25pF | CL05C5R1CB5NNN□ |
| | | | 100pF | ±10% | | | CL05C101KA5NNN□ | 5.6pF | ±0.1pF | CL05C5R6BB5NNN□ |
| | | | 120pF | ±5% | | | CL05C121JA5NNN□ | 5.6pF | ±0.25pF | CL05C5R6CB5NNN□ |
| | | | 150pF | ±5% | | | CL05C151JA5NNN□ | 5.6pF | ±0.5pF | CL05C5R6DB5NNN□ |
| | | | 180pF | ±5% | | | CL05C181JA5NNN□ | 6.0pF | ±0.25pF | CL05C060CB5NNN□ |
| | | | 220pF | ±1% | | | CL05C221FA5NNN□ | 6.0pF | ±0.5pF | CL05C060DB5NNN□ |
| | | | 220pF | ±5% | | | CL05C221JA5NNN□ | 6.2pF | ±0.25pF | CL05C6R2CB5NNN□ |
| | | | 270pF | ±5% | | | CL05C271JA5NNN□ | 6.2pF | ±0.5pF | CL05C6R2DB5NNN□ |
| | | | 560pF | ±5% | | | CL05C561JA5NNN□ | 6.8pF | ±0.1pF | CL05C6R8BB5NNN□ |
| | | | 1.0nF | ±5% | | | CL05C102JA5NNN□ | 6.8pF | ±0.25pF | CL05C6R8CB5NNN□ |
| | 50Vdc | 50Vdc | 0.2pF | ±0.1pF | | | CL05C0R2BB5NNN□ | 6.8pF | ±0.5pF | CL05C6R8DB5NNN□ |
| | | | 0.3pF | ±0.1pF | | | CL05C0R3BB5NNN□ | 7.0pF | ±0.1pF | CL05C070BB5NNN□ |
| | | | 0.3pF | ±0.25pF | | | CL05C0R3CB5NNN□ | 7.0pF | ±0.25pF | CL05C070CB5NNN□ |
| | | | 0.5pF | ±0.1pF | | | CL05C0R5BB5NNN□ | 7.0pF | ±0.5pF | CL05C070DB5NNN□ |
| | | | 0.5pF | ±0.25pF | | | CL05C0R5CB5NNN□ | 8.0pF | ±0.25pF | CL05C080CB5NNN□ |
| | | | 0.7pF | ±0.1pF | | | CL05C0R7BB5NNN□ | 8.0pF | ±0.5pF | CL05C080DB5NNN□ |
| | | | 0.75pF | ±0.1pF | | | CL05CR75BB5NNN□ | 8.2pF | ±0.1pF | CL05C8R2BB5NNN□ |
| | | | 0.75pF | ±0.25pF | | | CL05CR75CB5NNN□ | 8.2pF | ±0.25pF | CL05C8R2CB5NNN□ |
| | | | 1.0pF | ±0.1pF | | | CL05C010BB5NNN□ | 8.2pF | ±0.5pF | CL05C8R2DB5NNN□ |
| | | | 1.0pF | ±0.25pF | | | CL05C010CB5NNN□ | 9.0pF | ±0.25pF | CL05C090CB5NNN□ |
| | | | 1.2pF | ±0.1pF | | | CL05C1R2BB5NNN□ | 9.0pF | ±0.5pF | CL05C090DB5NNN□ |
| | | | 1.2pF | ±0.25pF | | | CL05C1R2CB5NNN□ | 9.1pF | ±0.1pF | CL05C9R1BB5NNN□ |
| | | | 1.3pF | ±0.1pF | | | CL05C1R3BB5NNN□ | 9.1pF | ±0.25pF | CL05C9R1CB5NNN□ |
| | | | 1.5pF | ±0.1pF | | | CL05C1R5BB5NNN□ | 10pF | ±0.25pF | CL05C100CB5NNN□ |
| | | | 1.5pF | ±0.25pF | | | CL05C1R5CB5NNN□ | 10pF | ±0.5pF | CL05C100DB5NNN□ |
| | | | 1.8pF | ±0.1pF | | | CL05C1R8BB5NNN□ | 10pF | ±5% | CL05C100JB5NNN□ |
| | | | 1.8pF | ±0.25pF | | | CL05C1R8CB5NNN□ | 11pF | ±5% | CL05C110JB5NNN□ |
| | | | 2.0pF | ±0.1pF | | | CL05C020BB5NNN□ | 12pF | ±2% | CL05C120GB5NNN□ |
| | | | 2.0pF | ±0.25pF | | | CL05C020CB5NNN□ | 12pF | ±5% | CL05C120JB5NNN□ |

※ □ mark means packaging code. If you want to learn the code or quantity in detail, please see p.148

Standard & High Capacitors

Product Line Up (COG)

■ Size : 1.00 X 0.50mm (inch : 0402)

| Thickness Max. | Rated Voltage | Capacitance | Capacitance Tolerance | Part Number |
|----------------|---------------|-----------------|-----------------------|-----------------|
| 0.55mm | 50Vdc | 13pF | ±5% | CL05C130JB5NNN□ |
| | | 14pF | ±5% | CL05C140JB5NNN□ |
| | | 15pF | ±5% | CL05C150JB5NNN□ |
| | | 16pF | ±5% | CL05C160JB5NNN□ |
| | | 17pF | ±5% | CL05C170JB5NNN□ |
| | | 18pF | ±2% | CL05C180GB5NNN□ |
| | | 18pF | ±5% | CL05C180JB5NNN□ |
| | | 20pF | ±2% | CL05C200GB5NNN□ |
| | | 20pF | ±5% | CL05C200JB5NNN□ |
| | | 22pF | ±1% | CL05C220FB5NNN□ |
| | | 22pF | ±2% | CL05C220GB5NNN□ |
| | | 22pF | ±5% | CL05C220JB5NNN□ |
| | | 24pF | ±5% | CL05C240JB5NNN□ |
| | | 26pF | ±5% | CL05C260JB5NNN□ |
| | | 27pF | ±1% | CL05C270FB5NNN□ |
| | | 27pF | ±5% | CL05C270JB5NNN□ |
| | | 30pF | ±5% | CL05C300JB5NNN□ |
| | | 33pF | ±1% | CL05C330FB5NNN□ |
| | | 33pF | ±5% | CL05C330JB5NNN□ |
| | | 36pF | ±5% | CL05C360JB5NNN□ |
| | | 39pF | ±2% | CL05C390GB5NNN□ |
| | | 39pF | ±5% | CL05C390JB5NNN□ |
| | | 43pF | ±2% | CL05C430GB5NNN□ |
| | | 43pF | ±5% | CL05C430JB5NNN□ |
| | | 47pF | ±1% | CL05C470FB5NNN□ |
| | | 47pF | ±5% | CL05C470JB5NNN□ |
| | | 51pF | ±5% | CL05C510JB5NNN□ |
| | | 56pF | ±1% | CL05C560FB5NNN□ |
| | | 56pF | ±5% | CL05C560JB5NNN□ |
| | | 62pF | ±2% | CL05C620GB5NNN□ |
| | | 62pF | ±5% | CL05C620JB5NNN□ |
| | | 68pF | ±5% | CL05C680JB5NNN□ |
| | | 75pF | ±5% | CL05C750JB5NNN□ |
| 82pF | ±5% | CL05C820JB5NNN□ | | |
| 91pF | ±5% | CL05C910JB5NNN□ | | |
| 100pF | ±1% | CL05C101FB5NNN□ | | |
| 100pF | ±2% | CL05C101GB5NNN□ | | |
| 100pF | ±5% | CL05C101JB5NNN□ | | |
| 100pF | ±10% | CL05C101KB5NNN□ | | |
| 110pF | ±5% | CL05C111JB5NNN□ | | |
| 120pF | ±2% | CL05C121GB5NNN□ | | |
| 120pF | ±5% | CL05C121JB5NNN□ | | |
| 130pF | ±5% | CL05C131JB5NNN□ | | |
| 150pF | ±5% | CL05C151JB5NNN□ | | |
| 160pF | ±5% | CL05C161JB5NNN□ | | |
| 180pF | ±5% | CL05C181JB5NNN□ | | |
| 200pF | ±5% | CL05C201JB5NNN□ | | |
| 220pF | ±1% | CL05C221FB5NNN□ | | |
| 220pF | ±2% | CL05C221GB5NNN□ | | |
| 220pF | ±5% | CL05C221JB5NNN□ | | |
| 240pF | ±5% | CL05C241JB5NNN□ | | |
| 270pF | ±5% | CL05C271JB5NNN□ | | |
| 300pF | ±5% | CL05C301JB5NNN□ | | |
| 330pF | ±5% | CL05C331JB5NNN□ | | |

| Thickness Max. | Rated Voltage | Capacitance | Capacitance Tolerance | Part Number |
|----------------|---------------|-------------|-----------------------|-----------------|
| 0.55mm | 50Vdc | 390pF | ±5% | CL05C391JB5NNN□ |
| | | 470pF | ±1% | CL05C471FB5NNN□ |
| | | 470pF | ±5% | CL05C471JB5NNN□ |
| | | 560pF | ±5% | CL05C561JB5NNN□ |
| | | 680pF | ±5% | CL05C681JB5NNN□ |
| | | 820pF | ±5% | CL05C821JB5NNN□ |
| | | 1.0nF | ±1% | CL05C102FB5NNN□ |
| | | 1.0nF | ±5% | CL05C102JB5NNN□ |

■ Size : 1.60 X 0.80mm (inch : 0603)

| Thickness Max. | Rated Voltage | Capacitance | Capacitance Tolerance | Part Number | |
|----------------|---------------|-----------------|-----------------------|-----------------|-----------------|
| 0.90mm | 16Vdc | 68pF | ±1% | CL10C680F08NNN□ | |
| | | 68pF | ±2% | CL10C680G08NNN□ | |
| | | 100pF | ±2% | CL10C101G08NNN□ | |
| | | 820pF | ±5% | CL10C821J08NNN□ | |
| | | 1.0nF | ±5% | CL10C102J08NNN□ | |
| | | 2.2nF | ±5% | CL10C222J08NNN□ | |
| | | 3.9nF | ±5% | CL10C392J08NNN□ | |
| | | 25Vdc | 10pF | ±0.5pF | CL10C100DA8NNN□ |
| | | | 10pF | ±5% | CL10C100JA8NNN□ |
| | | | 15pF | ±5% | CL10C150JA8NNN□ |
| | | | 20pF | ±5% | CL10C200JA8NNN□ |
| | | | 33pF | ±5% | CL10C330JA8NNN□ |
| | | | 47pF | ±5% | CL10C470JA8NNN□ |
| | | | 68pF | ±5% | CL10C680JA8NNN□ |
| | | | 100pF | ±5% | CL10C101JA8NNN□ |
| | 100pF | | ±10% | CL10C101KA8NNN□ | |
| | 120pF | | ±5% | CL10C121JA8NNN□ | |
| | 150pF | | ±5% | CL10C151JA8NNN□ | |
| | 180pF | | ±5% | CL10C181JA8NNN□ | |
| | 270pF | | ±10% | CL10C271KA8NNN□ | |
| | 330pF | | ±10% | CL10C331KA8NNN□ | |
| | 390pF | | ±5% | CL10C391JA8NNN□ | |
| | 470pF | | ±5% | CL10C471JA8NNN□ | |
| | 560pF | | ±5% | CL10C561JA8NNN□ | |
| | 680pF | | ±5% | CL10C681JA8NNN□ | |
| | 820pF | ±5% | CL10C821JA8NNN□ | | |
| | 1.5nF | ±2% | CL10C152GA8NNN□ | | |
| | 1.5nF | ±5% | CL10C152JA8NNN□ | | |
| | 1.8nF | ±5% | CL10C182JA8NNN□ | | |
| | 10nF | ±5% | CL10C103JA8NNN□ | | |
| | 1.0nF | ±2% | CL10C102GA8NNN□ | | |
| | 1.0nF | ±5% | CL10C102JA8NNN□ | | |
| | 2.2nF | ±2% | CL10C222GA8NNN□ | | |
| 2.2nF | ±5% | CL10C222JA8NNN□ | | | |
| 3.3nF | ±2% | CL10C332GA8NNN□ | | | |
| 3.3nF | ±5% | CL10C332JA8NNN□ | | | |
| 3.9nF | ±5% | CL10C392JA8NNN□ | | | |
| 50Vdc | 0.2pF | ±0.1pF | CL10C0R2BB8NNN□ | | |
| | 0.2pF | ±0.25pF | CL10C0R2CB8NNN□ | | |
| | 0.3pF | ±0.1pF | CL10C0R3BB8NNN□ | | |
| | 0.3pF | ±0.25pF | CL10C0R3CB8NNN□ | | |

* □ mark means packaging code. If you want to learn the code or quantity in detail, please see p.148

Product Line Up (COG)

■ Size : 1.60 X 0.80mm (inch : 0603)

| Thickness Max. | Rated Voltage | Capacitance | Capacitance Tolerance | Part Number | Thickness Max. | Rated Voltage | Capacitance | Capacitance Tolerance | Part Number |
|----------------|---------------|-----------------|-----------------------|-----------------|-----------------|---------------|-------------|-----------------------|-----------------|
| 0.90mm | 50Vdc | 0.47pF | ±0.1pF | CL10CR47BB8NNN□ | 0.90mm | 50Vdc | 6.8pF | ±0.25pF | CL10C6R8CB8NNN□ |
| | | 0.5pF | ±0.1pF | CL10C0R5BB8NNN□ | | | 6.8pF | ±0.5pF | CL10C6R8DB8NNN□ |
| | | 0.5pF | ±0.25pF | CL10C0R5CB8NNN□ | | | 7.0pF | ±0.1pF | CL10C070BB8NNN□ |
| | | 0.56pF | ±0.1pF | CL10CR56BB8NNN□ | | | 7.0pF | ±0.25pF | CL10C070CB8NNN□ |
| | | 0.68pF | ±0.1pF | CL10CR68BB8NNN□ | | | 7.0pF | ±0.5pF | CL10C070DB8NNN□ |
| | | 0.75pF | ±0.1pF | CL10CR75BB8NNN□ | | | 7.5pF | ±0.1pF | CL10C7R5BB8NNN□ |
| | | 0.75pF | ±0.25pF | CL10CR75CB8NNN□ | | | 7.5pF | ±0.25pF | CL10C7R5CB8NNN□ |
| | | 0.8pF | ±0.1pF | CL10C0R8BB8NNN□ | | | 7.5pF | ±0.5pF | CL10C7R5DB8NNN□ |
| | | 0.82pF | ±0.1pF | CL10CR82BB8NNN□ | | | 8.0pF | ±0.25pF | CL10C080CB8NNN□ |
| | | 1.0pF | ±0.1pF | CL10C010BB8NNN□ | | | 8.0pF | ±0.5pF | CL10C080DB8NNN□ |
| | | 1.0pF | ±0.25pF | CL10C010CB8NNN□ | | | 8.2pF | ±0.1pF | CL10C8R2BB8NNN□ |
| | | 1.2pF | ±0.1pF | CL10C1R2BB8NNN□ | | | 8.2pF | ±0.25pF | CL10C8R2CB8NNN□ |
| | | 1.2pF | ±0.25pF | CL10C1R2CB8NNN□ | | | 8.2pF | ±0.5pF | CL10C8R2DB8NNN□ |
| | | 1.5pF | ±0.1pF | CL10C1R5BB8NNN□ | | | 9.0pF | ±0.25pF | CL10C090CB8NNN□ |
| | | 1.5pF | ±0.25pF | CL10C1R5CB8NNN□ | | | 9.0pF | ±0.5pF | CL10C090DB8NNN□ |
| | | 1.8pF | ±0.1pF | CL10C1R8BB8NNN□ | | | 9.1pF | ±0.25pF | CL10C9R1CB8NNN□ |
| | | 1.8pF | ±0.25pF | CL10C1R8CB8NNN□ | | | 9.1pF | ±0.5pF | CL10C9R1DB8NNN□ |
| | | 2.0pF | ±0.1pF | CL10C020BB8NNN□ | | | 10pF | ±0.1pF | CL10C100BB8NNN□ |
| | | 2.0pF | ±0.25pF | CL10C020CB8NNN□ | | | 10pF | ±0.25pF | CL10C100CB8NNN□ |
| | | 2.2pF | ±0.1pF | CL10C2R2BB8NNN□ | | | 10pF | ±0.5pF | CL10C100DB8NNN□ |
| | | 2.2pF | ±0.25pF | CL10C2R2CB8NNN□ | | | 10pF | ±1% | CL10C100FB8NNN□ |
| | | 2.4pF | ±0.1pF | CL10C2R4BB8NNN□ | | | 10pF | ±2% | CL10C100GB8NNN□ |
| | | 2.4pF | ±0.25pF | CL10C2R4CB8NNN□ | | | 10pF | ±5% | CL10C100JB8NNN□ |
| | | 2.5pF | ±0.1pF | CL10C2R5BB8NNN□ | | | 10pF | ±10% | CL10C100KB8NNN□ |
| | | 2.5pF | ±0.25pF | CL10C2R5CB8NNN□ | | | 11pF | ±2% | CL10C110GB8NNN□ |
| | | 2.7pF | ±0.1pF | CL10C2R7BB8NNN□ | | | 11pF | ±5% | CL10C110JB8NNN□ |
| | | 2.7pF | ±0.25pF | CL10C2R7CB8NNN□ | | | 12pF | ±1% | CL10C120FB8NNN□ |
| | | 3.0pF | ±0.1pF | CL10C030BB8NNN□ | | | 12pF | ±2% | CL10C120GB8NNN□ |
| | | 3.0pF | ±0.25pF | CL10C030CB8NNN□ | | | 12pF | ±5% | CL10C120JB8NNN□ |
| | | 3.3pF | ±0.1pF | CL10C3R3BB8NNN□ | | | 13pF | ±2% | CL10C130GB8NNN□ |
| | | 3.3pF | ±0.25pF | CL10C3R3CB8NNN□ | | | 13pF | ±5% | CL10C130JB8NNN□ |
| | | 3.5pF | ±0.25pF | CL10C3R5CB8NNN□ | | | 14pF | ±5% | CL10C140JB8NNN□ |
| | | 3.6pF | ±0.1pF | CL10C3R6BB8NNN□ | | | 15pF | ±1% | CL10C150FB8NNN□ |
| | | 3.6pF | ±0.25pF | CL10C3R6CB8NNN□ | | | 15pF | ±2% | CL10C150GB8NNN□ |
| | | 3.9pF | ±0.1pF | CL10C3R9BB8NNN□ | | | 15pF | ±5% | CL10C150JB8NNN□ |
| | | 3.9pF | ±0.25pF | CL10C3R9CB8NNN□ | | | 15pF | ±10% | CL10C150KB8NNN□ |
| | | 4.0pF | ±0.1pF | CL10C040BB8NNN□ | | | 16pF | ±5% | CL10C160JB8NNN□ |
| | | 4.0pF | ±0.25pF | CL10C040CB8NNN□ | | | 17pF | ±5% | CL10C170JB8NNN□ |
| | | 4.3pF | ±0.1pF | CL10C4R3BB8NNN□ | | | 18pF | ±1% | CL10C180FB8NNN□ |
| | | 4.3pF | ±0.25pF | CL10C4R3CB8NNN□ | | | 18pF | ±2% | CL10C180GB8NNN□ |
| 4.7pF | ±0.1pF | CL10C4R7BB8NNN□ | 18pF | ±5% | CL10C180JB8NNN□ | | | | |
| 4.7pF | ±0.25pF | CL10C4R7CB8NNN□ | 19pF | ±5% | CL10C190JB8NNN□ | | | | |
| 5.0pF | ±0.1pF | CL10C050BB8NNN□ | 20pF | ±1% | CL10C200FB8NNN□ | | | | |
| 5.0pF | ±0.25pF | CL10C050CB8NNN□ | 20pF | ±2% | CL10C200GB8NNN□ | | | | |
| 5.0pF | ±0.5pF | CL10C050DB8NNN□ | 20pF | ±5% | CL10C200JB8NNN□ | | | | |
| 5.1pF | ±0.25pF | CL10C5R1CB8NNN□ | 21pF | ±5% | CL10C210JB8NNN□ | | | | |
| 5.6pF | ±0.1pF | CL10C5R6BB8NNN□ | 22pF | ±1% | CL10C220FB8NNN□ | | | | |
| 5.6pF | ±0.25pF | CL10C5R6CB8NNN□ | 22pF | ±2% | CL10C220GB8NNN□ | | | | |
| 5.6pF | ±0.5pF | CL10C5R6DB8NNN□ | 22pF | ±5% | CL10C220JB8NNN□ | | | | |
| 6.0pF | ±0.25pF | CL10C060CB8NNN□ | 22pF | ±10% | CL10C220KB8NNN□ | | | | |
| 6.0pF | ±0.5pF | CL10C060DB8NNN□ | 23pF | ±5% | CL10C230JB8NNN□ | | | | |
| 6.2pF | ±0.25pF | CL10C6R2CB8NNN□ | 24pF | ±2% | CL10C240GB8NNN□ | | | | |
| 6.2pF | ±0.5pF | CL10C6R2DB8NNN□ | 24pF | ±5% | CL10C240JB8NNN□ | | | | |
| 6.8pF | ±0.1pF | CL10C6R8BB8NNN□ | 25pF | ±5% | CL10C250JB8NNN□ | | | | |

※ □ mark means packaging code. If you want to learn the code or quantity in detail, please see p.148

Standard & High Capacitors

Product Line Up (COG)

■ Size : 1.60 X 0.80mm (inch : 0603)

| Thickness Max. | Rated Voltage | Capacitance | Capacitance Tolerance | Part Number | Thickness Max. | Rated Voltage | Capacitance | Capacitance Tolerance | Part Number |
|----------------|---------------|-----------------|-----------------------|-----------------|-----------------|---------------|-------------|-----------------------|-----------------|
| 0.90mm | 50Vdc | 26pF | ±5% | CL10C260JB8NNN□ | 0.90mm | 50Vdc | 91pF | ±5% | CL10C910JB8NNN□ |
| | | 27pF | ±1% | CL10C270FB8NNN□ | | | 95pF | ±5% | CL10C950JB8NNN□ |
| | | 27pF | ±2% | CL10C270GB8NNN□ | | | 100pF | ±1% | CL10C101FB8NNN□ |
| | | 27pF | ±5% | CL10C270JB8NNN□ | | | 100pF | ±2% | CL10C101GB8NNN□ |
| | | 28pF | ±2% | CL10C280GB8NNN□ | | | 100pF | ±5% | CL10C101JB8NNN□ |
| | | 28pF | ±5% | CL10C280JB8NNN□ | | | 100pF | ±10% | CL10C101KB8NNN□ |
| | | 30pF | ±1% | CL10C300FB8NNN□ | | | 110pF | ±5% | CL10C111JB8NNN□ |
| | | 30pF | ±5% | CL10C300JB8NNN□ | | | 120pF | ±1% | CL10C121FB8NNN□ |
| | | 32pF | ±2% | CL10C320GB8NNN□ | | | 120pF | ±2% | CL10C121GB8NNN□ |
| | | 32pF | ±5% | CL10C320JB8NNN□ | | | 120pF | ±5% | CL10C121JB8NNN□ |
| | | 33pF | ±1% | CL10C330FB8NNN□ | | | 120pF | ±10% | CL10C121KB8NNN□ |
| | | 33pF | ±2% | CL10C330GB8NNN□ | | | 130pF | ±1% | CL10C131FB8NNN□ |
| | | 33pF | ±5% | CL10C330JB8NNN□ | | | 130pF | ±5% | CL10C131JB8NNN□ |
| | | 33pF | ±10% | CL10C330KB8NNN□ | | | 140pF | ±5% | CL10C141JB8NNN□ |
| | | 35pF | ±2% | CL10C350GB8NNN□ | | | 150pF | ±2% | CL10C151GB8NNN□ |
| | | 35pF | ±5% | CL10C350JB8NNN□ | | | 150pF | ±5% | CL10C151JB8NNN□ |
| | | 36pF | ±2% | CL10C360GB8NNN□ | | | 160pF | ±5% | CL10C161JB8NNN□ |
| | | 36pF | ±5% | CL10C360JB8NNN□ | | | 170pF | ±2% | CL10C171GB8NNN□ |
| | | 39pF | ±1% | CL10C390FB8NNN□ | | | 170pF | ±5% | CL10C171JB8NNN□ |
| | | 39pF | ±2% | CL10C390GB8NNN□ | | | 180pF | ±1% | CL10C181FB8NNN□ |
| | | 39pF | ±5% | CL10C390JB8NNN□ | | | 180pF | ±2% | CL10C181GB8NNN□ |
| | | 41pF | ±2% | CL10C410GB8NNN□ | | | 180pF | ±5% | CL10C181JB8NNN□ |
| | | 41pF | ±5% | CL10C410JB8NNN□ | | | 190pF | ±5% | CL10C191JB8NNN□ |
| | | 42pF | ±5% | CL10C420JB8NNN□ | | | 200pF | ±1% | CL10C201FB8NNN□ |
| | | 43pF | ±5% | CL10C430JB8NNN□ | | | 200pF | ±5% | CL10C201JB8NNN□ |
| | | 47pF | ±1% | CL10C470FB8NNN□ | | | 220pF | ±1% | CL10C221FB8NNN□ |
| | | 47pF | ±2% | CL10C470GB8NNN□ | | | 220pF | ±2% | CL10C221GB8NNN□ |
| | | 47pF | ±5% | CL10C470JB8NNN□ | | | 220pF | ±5% | CL10C221JB8NNN□ |
| | | 47pF | ±10% | CL10C470KB8NNN□ | | | 220pF | ±10% | CL10C221KB8NNN□ |
| | | 50pF | ±5% | CL10C500JB8NNN□ | | | 240pF | ±5% | CL10C241JB8NNN□ |
| | | 51pF | ±2% | CL10C510GB8NNN□ | | | 250pF | ±5% | CL10C251JB8NNN□ |
| | | 51pF | ±5% | CL10C510JB8NNN□ | | | 270pF | ±1% | CL10C271FB8NNN□ |
| | | 56pF | ±1% | CL10C560FB8NNN□ | | | 270pF | ±2% | CL10C271GB8NNN□ |
| | | 56pF | ±2% | CL10C560GB8NNN□ | | | 270pF | ±5% | CL10C271JB8NNN□ |
| | | 56pF | ±5% | CL10C560JB8NNN□ | | | 280pF | ±5% | CL10C281JB8NNN□ |
| | | 56pF | ±10% | CL10C560KB8NNN□ | | | 300pF | ±5% | CL10C301JB8NNN□ |
| | | 60pF | ±5% | CL10C600JB8NNN□ | | | 330pF | ±0.25pF | CL10C331CB8NNN□ |
| | | 62pF | ±2% | CL10C620GB8NNN□ | | | 330pF | ±1% | CL10C331FB8NNN□ |
| | | 62pF | ±5% | CL10C620JB8NNN□ | | | 330pF | ±2% | CL10C331GB8NNN□ |
| | | 68pF | ±1% | CL10C680FB8NNN□ | | | 330pF | ±5% | CL10C331JB8NNN□ |
| | | 68pF | ±2% | CL10C680GB8NNN□ | | | 350pF | ±5% | CL10C351JB8NNN□ |
| 68pF | ±5% | CL10C680JB8NNN□ | 360pF | ±5% | CL10C361JB8NNN□ | | | | |
| 68pF | ±10% | CL10C680KB8NNN□ | 390pF | ±1% | CL10C391FB8NNN□ | | | | |
| 70pF | ±2% | CL10C700GB8NNN□ | 390pF | ±2% | CL10C391GB8NNN□ | | | | |
| 70pF | ±5% | CL10C700JB8NNN□ | 390pF | ±5% | CL10C391JB8NNN□ | | | | |
| 75pF | ±2% | CL10C750GB8NNN□ | 390pF | ±10% | CL10C391KB8NNN□ | | | | |
| 75pF | ±5% | CL10C750JB8NNN□ | 430pF | ±5% | CL10C431JB8NNN□ | | | | |
| 80pF | ±2% | CL10C800GB8NNN□ | 470pF | ±1% | CL10C471FB8NNN□ | | | | |
| 80pF | ±5% | CL10C800JB8NNN□ | 470pF | ±2% | CL10C471GB8NNN□ | | | | |
| 82pF | ±1% | CL10C820FB8NNN□ | 470pF | ±5% | CL10C471JB8NNN□ | | | | |
| 82pF | ±2% | CL10C820GB8NNN□ | 470pF | ±10% | CL10C471KB8NNN□ | | | | |
| 82pF | ±5% | CL10C820JB8NNN□ | 500pF | ±5% | CL10C501JB8NNN□ | | | | |
| 90pF | ±5% | CL10C900JB8NNN□ | 510pF | ±5% | CL10C511JB8NNN□ | | | | |
| 91pF | ±2% | CL10C910JB8NNN□ | 560pF | ±1% | CL10C561FB8NNN□ | | | | |

* □ mark means packaging code. If you want to learn the code or quantity in detail, please see p.148

Product Line Up (COG)

■ Size : 1.60 X 0.80mm (inch : 0603)

| Thickness Max. | Rated Voltage | Capacitance | Capacitance Tolerance | Part Number |
|----------------|---------------|------------------|-----------------------|------------------|
| 0.90mm | 50Vdc | 560pF | ±2% | CL10C561GB8NNN □ |
| | | 560pF | ±5% | CL10C561JB8NNN □ |
| | | 560pF | ±10% | CL10C561KB8NNN □ |
| | | 620pF | ±5% | CL10C621JB8NNN □ |
| | | 680pF | ±1% | CL10C681FB8NNN □ |
| | | 680pF | ±2% | CL10C681GB8NNN □ |
| | | 680pF | ±5% | CL10C681JB8NNN □ |
| | | 680pF | ±10% | CL10C681KB8NNN □ |
| | | 720pF | ±5% | CL10C721JB8NNN □ |
| | | 750pF | ±5% | CL10C751JB8NNN □ |
| | | 820pF | ±1% | CL10C821FB8NNN □ |
| | | 820pF | ±2% | CL10C821GB8NNN □ |
| | | 820pF | ±5% | CL10C821JB8NNN □ |
| | | 820pF | ±10% | CL10C821KB8NNN □ |
| | | 910pF | ±5% | CL10C911JB8NNN □ |
| | | 1.0nF | ±1% | CL10C102FB8NNN □ |
| | | 1.0nF | ±2% | CL10C102GB8NNN □ |
| | | 1.0nF | ±5% | CL10C102JB8NNN □ |
| | | 1.2nF | ±5% | CL10C122JB8NNN □ |
| | | 1.5nF | ±5% | CL10C152JB8NNN □ |
| 1.8nF | ±5% | CL10C182JB8NNN □ | | |
| 2.2nF | ±5% | CL10C222JB8NNN □ | | |
| 2.7nF | ±5% | CL10C272JB8NNN □ | | |
| 3.3nF | ±5% | CL10C332JB8NNN □ | | |
| 4.7nF | ±5% | CL10C472JB8NNN □ | | |
| 5.6nF | ±5% | CL10C562JB8NNN □ | | |

■ Size : 2.00 X 1.25mm (inch : 0805)

| Thickness Max. | Rated Voltage | Capacitance | Capacitance Tolerance | Part Number | |
|----------------|---------------|------------------|-----------------------|------------------|------------------|
| 0.75mm | 25Vdc | 220pF | ±2% | CL21C221GAANNN □ | |
| | | 220pF | ±5% | CL21C221JAANNN □ | |
| | | 270pF | ±5% | CL21C271JAANNN □ | |
| | | 680pF | ±5% | CL21C681JAANNN □ | |
| | | 1.5nF | ±5% | CL21C152JAANNN □ | |
| | | 3.9nF | ±5% | CL21C392JAANNN □ | |
| | | 50Vdc | 0.47pF | ±0.1pF | CL21CR47BBANNN □ |
| | | | 0.47pF | ±0.25pF | CL21CR47CBANNN □ |
| | | | 0.5pF | ±0.1pF | CL21C0R5BBANNN □ |
| | | | 0.5pF | ±0.25pF | CL21C0R5CBANNN □ |
| | 0.68pF | | ±0.1pF | CL21CR68BBANNN □ | |
| | 0.75pF | | ±0.1pF | CL21CR75BBANNN □ | |
| | 0.82pF | | ±0.1pF | CL21CR82BBANNN □ | |
| | 0.82pF | | ±0.25pF | CL21CR82CBANNN □ | |
| | 1.0pF | | ±0.1pF | CL21C010BBANNN □ | |
| | 1.0pF | | ±0.25pF | CL21C010CBANNN □ | |
| | 1.2pF | ±0.1pF | CL21C1R2BBANNN □ | | |
| | 1.2pF | ±0.25pF | CL21C1R2CBANNN □ | | |
| | 1.5pF | ±0.1pF | CL21C1R5BBANNN □ | | |
| | 1.5pF | ±0.25pF | CL21C1R5CBANNN □ | | |
| 1.8pF | ±0.1pF | CL21C1R8BBANNN □ | | | |
| 1.8pF | ±0.25pF | CL21C1R8CBANNN □ | | | |
| 1.8pF | ±0.5pF | CL21C1R8DBANNN □ | | | |

| Thickness Max. | Rated Voltage | Capacitance | Capacitance Tolerance | Part Number |
|----------------|---------------|------------------|-----------------------|------------------|
| 0.75mm | 50Vdc | 2.0pF | ±0.25pF | CL21C020CBANNN □ |
| | | 2.2pF | ±0.1pF | CL21C2R2BBANNN □ |
| | | 2.2pF | ±0.25pF | CL21C2R2CBANNN □ |
| | | 2.4pF | ±0.25pF | CL21C2R4CBANNN □ |
| | | 2.5pF | ±0.25pF | CL21C2R5CBANNN □ |
| | | 2.7pF | ±0.1pF | CL21C2R7BBANNN □ |
| | | 2.7pF | ±0.25pF | CL21C2R7CBANNN □ |
| | | 3.0pF | ±0.1pF | CL21C030BBANNN □ |
| | | 3.0pF | ±0.25pF | CL21C030CBANNN □ |
| | | 3.2pF | ±0.25pF | CL21C3R2CBANNN □ |
| | | 3.3pF | ±0.1pF | CL21C3R3BBANNN □ |
| | | 3.3pF | ±0.25pF | CL21C3R3CBANNN □ |
| | | 3.6pF | ±0.1pF | CL21C3R6BBANNN □ |
| | | 3.6pF | ±0.25pF | CL21C3R6CBANNN □ |
| | | 3.9pF | ±0.1pF | CL21C3R9BBANNN □ |
| | | 3.9pF | ±0.25pF | CL21C3R9CBANNN □ |
| | | 4.0pF | ±0.1pF | CL21C040BBANNN □ |
| | | 4.0pF | ±0.25pF | CL21C040CBANNN □ |
| | | 4.7pF | ±0.1pF | CL21C4R7BBANNN □ |
| | | 4.7pF | ±0.25pF | CL21C4R7CBANNN □ |
| | | 5.0pF | ±0.1pF | CL21C050BBANNN □ |
| | | 5.0pF | ±0.25pF | CL21C050CBANNN □ |
| | | 5.1pF | ±0.25pF | CL21C5R1CBANNN □ |
| | | 5.6pF | ±0.25pF | CL21C5R6CBANNN □ |
| | | 5.6pF | ±0.5pF | CL21C5R6DBANNN □ |
| | | 6.0pF | ±0.25pF | CL21C060CBANNN □ |
| | | 6.0pF | ±0.5pF | CL21C060DBANNN □ |
| | | 6.2pF | ±0.25pF | CL21C6R2CBANNN □ |
| | | 6.8pF | ±0.25pF | CL21C6R8CBANNN □ |
| | | 6.8pF | ±0.5pF | CL21C6R8DBANNN □ |
| | | 7.0pF | ±0.25pF | CL21C070CBANNN □ |
| | | 7.0pF | ±0.5pF | CL21C070DBANNN □ |
| | | 7.5pF | ±0.25pF | CL21C7R5CBANNN □ |
| | | 7.5pF | ±0.5pF | CL21C7R5DBANNN □ |
| | | 8.0pF | ±0.25pF | CL21C080CBANNN □ |
| | | 8.0pF | ±0.5pF | CL21C080DBANNN □ |
| | | 8.2pF | ±0.1pF | CL21C8R2BBANNN □ |
| | | 8.2pF | ±0.25pF | CL21C8R2CBANNN □ |
| | | 8.2pF | ±0.5pF | CL21C8R2DBANNN □ |
| | | 9.0pF | ±0.25pF | CL21C090CBANNN □ |
| 9.0pF | ±0.5pF | CL21C090DBANNN □ | | |
| 10pF | ±0.1pF | CL21C100BBANNN □ | | |
| 10pF | ±0.25pF | CL21C100CBANNN □ | | |
| 10pF | ±0.5pF | CL21C100DBANNN □ | | |
| 10pF | ±1% | CL21C100FBANNN □ | | |
| 10pF | ±2% | CL21C100GBANNN □ | | |
| 10pF | ±5% | CL21C100JBANNN □ | | |
| 12pF | ±1% | CL21C120FBANNN □ | | |
| 12pF | ±2% | CL21C120GBANNN □ | | |
| 12pF | ±5% | CL21C120JBANNN □ | | |
| 12pF | ±5% | CL21C130JBANNN □ | | |
| 13pF | ±5% | CL21C130JBANNN □ | | |
| 14pF | ±5% | CL21C140JBANNN □ | | |
| 15pF | ±2% | CL21C150GBANNN □ | | |
| 15pF | ±5% | CL21C150JBANNN □ | | |

※ □ mark means packaging code. If you want to learn the code or quantity in detail, please see p.148

Standard & High Capacitors

Product Line Up (COG)

■ Size : 2.00 X 1.25mm (inch : 0805)

| Thickness Max. | Rated Voltage | Capacitance | Capacitance Tolerance | Part Number | Thickness Max. | Rated Voltage | Capacitance | Capacitance Tolerance | Part Number |
|----------------|---------------|-----------------|-----------------------|-----------------|-----------------|---------------|-------------|-----------------------|-----------------|
| 0.75mm | 50Vdc | 15pF | ±10% | CL21C150KBANNN□ | 0.75mm | 50Vdc | 75pF | ±5% | CL21C750JBANNN□ |
| | | 16pF | ±5% | CL21C160JBANNN□ | | | 80pF | ±2% | CL21C800GBANNN□ |
| | | 17pF | ±5% | CL21C170JBANNN□ | | | 80pF | ±5% | CL21C800JBANNN□ |
| | | 18pF | ±1% | CL21C180FBANNN□ | | | 82pF | ±1% | CL21C820FBANNN□ |
| | | 18pF | ±2% | CL21C180GBANNN□ | | | 82pF | ±2% | CL21C820GBANNN□ |
| | | 18pF | ±5% | CL21C180JBANNN□ | | | 82pF | ±5% | CL21C820JBANNN□ |
| | | 20pF | ±2% | CL21C200GBANNN□ | | | 90pF | ±5% | CL21C900JBANNN□ |
| | | 20pF | ±5% | CL21C200JBANNN□ | | | 91pF | ±5% | CL21C910JBANNN□ |
| | | 22pF | ±1% | CL21C220FBANNN□ | | | 100pF | ±1% | CL21C101FBANNN□ |
| | | 22pF | ±2% | CL21C220GBANNN□ | | | 100pF | ±2% | CL21C101GBANNN□ |
| | | 22pF | ±5% | CL21C220JBANNN□ | | | 100pF | ±5% | CL21C101JBANNN□ |
| | | 22pF | ±10% | CL21C220KBANNN□ | | | 100pF | ±10% | CL21C101KBANNN□ |
| | | 23pF | ±5% | CL21C230JBANNN□ | | | 110pF | ±5% | CL21C111JBANNN□ |
| | | 24pF | ±2% | CL21C240GBANNN□ | | | 120pF | ±1% | CL21C121FBANNN□ |
| | | 24pF | ±5% | CL21C240JBANNN□ | | | 120pF | ±2% | CL21C121GBANNN□ |
| | | 25pF | ±5% | CL21C250JBANNN□ | | | 120pF | ±5% | CL21C121JBANNN□ |
| | | 27pF | ±1% | CL21C270FBANNN□ | | | 130pF | ±5% | CL21C131JBANNN□ |
| | | 27pF | ±2% | CL21C270GBANNN□ | | | 150pF | ±1% | CL21C151FBANNN□ |
| | | 27pF | ±5% | CL21C270JBANNN□ | | | 150pF | ±2% | CL21C151GBANNN□ |
| | | 28pF | ±5% | CL21C280JBANNN□ | | | 150pF | ±5% | CL21C151JBANNN□ |
| | | 30pF | ±5% | CL21C300JBANNN□ | | | 160pF | ±5% | CL21C161JBANNN□ |
| | | 32pF | ±2% | CL21C320GBANNN□ | | | 180pF | ±1% | CL21C181FBANNN□ |
| | | 32pF | ±5% | CL21C320JBANNN□ | | | 180pF | ±2% | CL21C181GBANNN□ |
| | | 33pF | ±1% | CL21C330FBANNN□ | | | 180pF | ±5% | CL21C181JBANNN□ |
| | | 33pF | ±2% | CL21C330GBANNN□ | | | 200pF | ±5% | CL21C201JBANNN□ |
| | | 33pF | ±5% | CL21C330JBANNN□ | | | 220pF | ±1% | CL21C221FBANNN□ |
| | | 33pF | ±10% | CL21C330KBANNN□ | | | 220pF | ±2% | CL21C221GBANNN□ |
| | | 36pF | ±5% | CL21C360JBANNN□ | | | 220pF | ±5% | CL21C221JBANNN□ |
| | | 38pF | ±2% | CL21C380GBANNN□ | | | 220pF | ±10% | CL21C221KBANNN□ |
| | | 38pF | ±5% | CL21C380JBANNN□ | | | 240pF | ±5% | CL21C241JBANNN□ |
| | | 39pF | ±2% | CL21C390GBANNN□ | | | 250pF | ±5% | CL21C251JBANNN□ |
| | | 39pF | ±5% | CL21C390JBANNN□ | | | 260pF | ±5% | CL21C261JBANNN□ |
| | | 40pF | ±2% | CL21C400GBANNN□ | | | 270pF | ±1% | CL21C271FBANNN□ |
| | | 40pF | ±5% | CL21C400JBANNN□ | | | 270pF | ±2% | CL21C271GBANNN□ |
| | | 43pF | ±5% | CL21C430JBANNN□ | | | 270pF | ±5% | CL21C271JBANNN□ |
| | | 47pF | ±1% | CL21C470FBANNN□ | | | 300pF | ±5% | CL21C301JBANNN□ |
| | | 47pF | ±2% | CL21C470GBANNN□ | | | 330pF | ±1% | CL21C331FBANNN□ |
| | | 47pF | ±5% | CL21C470JBANNN□ | | | 330pF | ±2% | CL21C331GBANNN□ |
| | | 47pF | ±10% | CL21C470KBANNN□ | | | 330pF | ±5% | CL21C331JBANNN□ |
| | | 50pF | ±5% | CL21C500JBANNN□ | | | 360pF | ±5% | CL21C361JBANNN□ |
| | | 51pF | ±2% | CL21C510GBANNN□ | | | 390pF | ±1% | CL21C391FBANNN□ |
| | | 51pF | ±5% | CL21C510JBANNN□ | | | 390pF | ±2% | CL21C391GBANNN□ |
| | | 56pF | ±1% | CL21C560FBANNN□ | | | 390pF | ±5% | CL21C391JBANNN□ |
| | | 56pF | ±2% | CL21C560GBANNN□ | | | 430pF | ±5% | CL21C431JBANNN□ |
| | | 56pF | ±5% | CL21C560JBANNN□ | | | 470pF | ±1% | CL21C471FBANNN□ |
| 60pF | ±5% | CL21C600JBANNN□ | 470pF | ±2% | CL21C471GBANNN□ | | | | |
| 62pF | ±5% | CL21C620JBANNN□ | 470pF | ±5% | CL21C471JBANNN□ | | | | |
| 68pF | ±1% | CL21C680FBANNN□ | 470pF | ±10% | CL21C471KBANNN□ | | | | |
| 68pF | ±2% | CL21C680GBANNN□ | 510pF | ±5% | CL21C511JBANNN□ | | | | |
| 68pF | ±5% | CL21C680JBANNN□ | 560pF | ±1% | CL21C561BANNN□ | | | | |
| 68pF | ±10% | CL21C680KBANNN□ | 560pF | ±2% | CL21C561GBANNN□ | | | | |
| 70pF | ±5% | CL21C700JBANNN□ | 560pF | ±5% | CL21C561JBANNN□ | | | | |
| 70pF | ±10% | CL21C700KBANNN□ | 680pF | ±5% | CL21C681JBANNN□ | | | | |
| 75pF | ±2% | CL21C750GBANNN□ | 5.0pF | ±0.25pF | CL21C050CBCNN□ | | | | |

* □ mark means packaging code. If you want to learn the code or quantity in detail, please see p.148

Product Line Up (COG)

■ Size : 2.00 X 1.25mm (inch : 0805)

| Thickness Max. | Rated Voltage | Capacitance | Capacitance Tolerance | Part Number | Thickness Max. | Rated Voltage | Capacitance | Capacitance Tolerance | Part Number | | |
|----------------|---------------|------------------|-----------------------|------------------|----------------|---------------|-------------|-----------------------|------------------|-------|------------------|
| 0.95mm | 50Vdc | 10pF | ±0.1pF | CL21C100BCCNNN □ | 0.95mm | 50Vdc | 1.0nF | ±2% | CL21C102GBCNNN □ | | |
| | | 10pF | ±5% | CL21C100JBCNNN □ | | | 1.0nF | ±5% | CL21C102JBCNNN □ | | |
| | | 11pF | ±2% | CL21C110GBCNNN □ | | | 1.0nF | ±10% | CL21C102KBCNNN □ | | |
| | | 11pF | ±5% | CL21C110JBCNNN □ | | | 1.35mm | 25Vdc | 270pF | ±5% | CL21C271JAFNNN □ |
| | | 12pF | ±2% | CL21C120GBCNNN □ | | | | | 2.7nF | ±5% | CL21C272JAFNNN □ |
| | | 12pF | ±5% | CL21C120JBCNNN □ | | | | | 3.3nF | ±5% | CL21C332JAFNNN □ |
| | | 13pF | ±2% | CL21C130GBCNNN □ | | | | | 3.9nF | ±5% | CL21C392JAFNNN □ |
| | | 15pF | ±2% | CL21C150GBCNNN □ | | | | | 4.7nF | ±5% | CL21C472JAFNNN □ |
| | | 15pF | ±5% | CL21C150JBCNNN □ | | | | | 4.7nF | ±10% | CL21C472KAFNNN □ |
| | | 16pF | ±2% | CL21C160GBCNNN □ | | | | | 8.2nF | ±5% | CL21C822JAFNNN □ |
| | | 18pF | ±2% | CL21C180GBCNNN □ | | | | | 10nF | ±2% | CL21C103GAFNNN □ |
| | | 18pF | ±5% | CL21C180JBCNNN □ | | | | | 10nF | ±5% | CL21C103JAFNNN □ |
| | | 20pF | ±2% | CL21C200GBCNNN □ | | | | | 50Vdc | 50Vdc | 1.2nF |
| | | 20pF | ±5% | CL21C200JBCNNN □ | | | 1.2nF | ±2% | | | CL21C122GBFNNN □ |
| | | 22pF | ±2% | CL21C220GBCNNN □ | | | 1.2nF | ±5% | | | CL21C122JBFNNN □ |
| | | 22pF | ±5% | CL21C220JBCNNN □ | | | 1.3nF | ±5% | | | CL21C132JBFNNN □ |
| | | 24pF | ±2% | CL21C240GBCNNN □ | | | 1.5nF | ±1% | | | CL21C152FBFNNN □ |
| | | 30pF | ±2% | CL21C300GBCNNN □ | | | 1.5nF | ±2% | | | CL21C152GBFNNN □ |
| | | 30pF | ±5% | CL21C300JBCNNN □ | | | 1.5nF | ±5% | | | CL21C152JBFNNN □ |
| | | 36pF | ±2% | CL21C360GBCNNN □ | | | 1.6nF | ±5% | | | CL21C162JBFNNN □ |
| | | 36pF | ±5% | CL21C360JBCNNN □ | | | 1.8nF | ±2% | | | CL21C182GBFNNN □ |
| | | 39pF | ±5% | CL21C390JBCNNN □ | | | 1.8nF | ±5% | | | CL21C182JBFNNN □ |
| | | 43pF | ±2% | CL21C430GBCNNN □ | | | 2.0nF | ±5% | CL21C202JBFNNN □ | | |
| | | 43pF | ±5% | CL21C430JBCNNN □ | | | 2.2nF | ±2% | CL21C222GBFNNN □ | | |
| | | 47pF | ±5% | CL21C470JBCNNN □ | | | 2.2nF | ±5% | CL21C222JBFNNN □ | | |
| | | 51pF | ±5% | CL21C510JBCNNN □ | | | 2.7nF | ±5% | CL21C272JBFNNN □ | | |
| | | 51pF | ±10% | CL21C510KBCNNN □ | | | 3.3nF | ±5% | CL21C332JBFNNN □ | | |
| | | 56pF | ±2% | CL21C560GBCNNN □ | | | 3.9nF | ±5% | CL21C392JBFNNN □ | | |
| | | 56pF | ±5% | CL21C560JBCNNN □ | | | 4.7nF | ±5% | CL21C472JBFNNN □ | | |
| | | 68pF | ±5% | CL21C680JBCNNN □ | | | 5.6nF | ±5% | CL21C562JBFNNN □ | | |
| | | 82pF | ±5% | CL21C820JBCNNN □ | | | 6.8nF | ±5% | CL21C682JBFNNN □ | | |
| | | 100pF | ±5% | CL21C101JBCNNN □ | | | 10nF | ±5% | CL21C103JBFNNN □ | | |
| | | 120pF | ±1% | CL21C121FBCNNN □ | | | | | | | |
| | | 120pF | ±5% | CL21C121JBCNNN □ | | | | | | | |
| 120pF | ±10% | CL21C121KBCNNN □ | | | | | | | | | |
| 150pF | ±5% | CL21C151JBCNNN □ | | | | | | | | | |
| 180pF | ±5% | CL21C181JBCNNN □ | | | | | | | | | |
| 220pF | ±5% | CL21C221JBCNNN □ | | | | | | | | | |
| 300pF | ±5% | CL21C301JBCNNN □ | | | | | | | | | |
| 330pF | ±2% | CL21C331GBCNNN □ | | | | | | | | | |
| 470pF | ±5% | CL21C471JBCNNN □ | | | | | | | | | |
| 510pF | ±5% | CL21C511JBCNNN □ | | | | | | | | | |
| 560pF | ±5% | CL21C561JBCNNN □ | | | | | | | | | |
| 600pF | ±5% | CL21C601JBCNNN □ | | | | | | | | | |
| 620pF | ±5% | CL21C621JBCNNN □ | | | | | | | | | |
| 680pF | ±1% | CL21C681FBCNNN □ | | | | | | | | | |
| 680pF | ±2% | CL21C681GBCNNN □ | | | | | | | | | |
| 680pF | ±5% | CL21C681JBCNNN □ | | | | | | | | | |
| 750pF | ±5% | CL21C751JBCNNN □ | | | | | | | | | |
| 820pF | ±1% | CL21C821FBCNNN □ | | | | | | | | | |
| 820pF | ±2% | CL21C821GBCNNN □ | | | | | | | | | |
| 820pF | ±5% | CL21C821JBCNNN □ | | | | | | | | | |
| 910pF | ±5% | CL21C911JBCNNN □ | | | | | | | | | |
| 1.0nF | ±1% | CL21C102FBCNNN □ | | | | | | | | | |

■ Size : 3.20 X 1.60mm (inch : 1206)

| Thickness Max. | Rated Voltage | Capacitance | Capacitance Tolerance | Part Number |
|----------------|---------------|-------------|-----------------------|------------------|
| 1.00mm | 25Vdc | 330pF | ±5% | CL31C331JACNNN □ |
| | | 470pF | ±10% | CL31C471KACNNN □ |
| | 50Vdc | 0.5pF | ±0.25pF | CL31C0R5CBCNNN □ |
| | | 1.0pF | ±0.25pF | CL31C010CBCNNN □ |
| | | 1.2pF | ±0.25pF | CL31C1R2CBCNNN □ |
| | | 1.8pF | ±0.25pF | CL31C1R8CBCNNN □ |
| | | 2.0pF | ±0.25pF | CL31C020CBCNNN □ |
| | | 2.2pF | ±0.25pF | CL31C2R2CBCNNN □ |
| | | 2.7pF | ±0.1pF | CL31C2R7BCCNNN □ |
| | | 2.7pF | ±0.25pF | CL31C2R7CBCNNN □ |
| | | 3.0pF | ±0.25pF | CL31C030CBCNNN □ |
| | | 3.3pF | ±0.25pF | CL31C3R3CBCNNN □ |
| | | 3.9pF | ±0.1pF | CL31C3R9BCCNNN □ |
| | | 4.3pF | ±0.1pF | CL31C4R3BCCNNN □ |
| | | 4.7pF | ±0.25pF | CL31C4R7CBCNNN □ |
| | | 5.6pF | ±0.25pF | CL31C5R6CBCNNN □ |
| | | 5.6pF | ±0.5pF | CL31C5R6DBCNNN □ |

※ □ mark means packaging code. If you want to learn the code or quantity in detail, please see p.148

Standard & High Capacitors

Product Line Up (COG)

■ Size : 3.20 X 1.60mm (inch : 1206)

| Thickness Max. | Rated Voltage | Capacitance | Capacitance Tolerance | Part Number | Thickness Max. | Rated Voltage | Capacitance | Capacitance Tolerance | Part Number |
|----------------|---------------|-----------------|-----------------------|-----------------|-----------------|---------------|------------------|-----------------------|-----------------|
| 1.00mm | 50Vdc | 6.0pF | ±0.5pF | CL31C060DBCNNN□ | 1.00mm | 50Vdc | 200pF | ±5% | CL31C201JBCNNN□ |
| | | 6.8pF | ±0.25pF | CL31C6R8CBCNNN□ | | | 220pF | ±1% | CL31C221FBCNNN□ |
| | | 8.0pF | ±0.25pF | CL31C080CBCNNN□ | | | 220pF | ±2% | CL31C221GBCNNN□ |
| | | 8.2pF | ±0.25pF | CL31C8R2CBCNNN□ | | | 220pF | ±5% | CL31C221JBCNNN□ |
| | | 10pF | ±0.5pF | CL31C100DBCNNN□ | | | 240pF | ±5% | CL31C241JBCNNN□ |
| | | 10pF | ±5% | CL31C100JBCNNN□ | | | 270pF | ±5% | CL31C271JBCNNN□ |
| | | 11pF | ±5% | CL31C110JBCNNN□ | | | 300pF | ±5% | CL31C301JBCNNN□ |
| | | 12pF | ±5% | CL31C120JBCNNN□ | | | 330pF | ±1% | CL31C331FBCNNN□ |
| | | 13pF | ±5% | CL31C130JBCNNN□ | | | 330pF | ±2% | CL31C331GBCNNN□ |
| | | 15pF | ±5% | CL31C150JBCNNN□ | | | 330pF | ±5% | CL31C331JBCNNN□ |
| | | 15pF | ±10% | CL31C150KBCNNN□ | | | 360pF | ±1% | CL31C361FBCNNN□ |
| | | 16pF | ±5% | CL31C160JBCNNN□ | | | 360pF | ±5% | CL31C361JBCNNN□ |
| | | 18pF | ±5% | CL31C180JBCNNN□ | | | 390pF | ±1% | CL31C391FBCNNN□ |
| | | 20pF | ±2% | CL31C200GBCNNN□ | | | 390pF | ±2% | CL31C391GBCNNN□ |
| | | 20pF | ±5% | CL31C200JBCNNN□ | | | 390pF | ±5% | CL31C391JBCNNN□ |
| | | 22pF | ±1% | CL31C220FBCNNN□ | | | 430pF | ±5% | CL31C431JBCNNN□ |
| | | 22pF | ±5% | CL31C220JBCNNN□ | | | 470pF | ±1% | CL31C471FBCNNN□ |
| | | 24pF | ±2% | CL31C240GBCNNN□ | | | 470pF | ±2% | CL31C471GBCNNN□ |
| | | 24pF | ±5% | CL31C240JBCNNN□ | | | 470pF | ±5% | CL31C471JBCNNN□ |
| | | 25pF | ±5% | CL31C250JBCNNN□ | | | 470pF | ±10% | CL31C471KBCNNN□ |
| | | 27pF | ±1% | CL31C270FBCNNN□ | | | 510pF | ±5% | CL31C511JBCNNN□ |
| | | 27pF | ±2% | CL31C270GBCNNN□ | | | 560pF | ±1% | CL31C561FBCNNN□ |
| | | 27pF | ±5% | CL31C270JBCNNN□ | | | 560pF | ±5% | CL31C561JBCNNN□ |
| | | 30pF | ±5% | CL31C300JBCNNN□ | | | 620pF | ±5% | CL31C621JBCNNN□ |
| | | 33pF | ±1% | CL31C330FBCNNN□ | | | 680pF | ±1% | CL31C681FBCNNN□ |
| | | 33pF | ±5% | CL31C330JBCNNN□ | | | 680pF | ±2% | CL31C681GBCNNN□ |
| | | 36pF | ±5% | CL31C360JBCNNN□ | | | 680pF | ±5% | CL31C681JBCNNN□ |
| | | 38pF | ±2% | CL31C380GBCNNN□ | | | 750pF | ±5% | CL31C751JBCNNN□ |
| | | 39pF | ±2% | CL31C390GBCNNN□ | | | 820pF | ±5% | CL31C821JBCNNN□ |
| | | 39pF | ±5% | CL31C390JBCNNN□ | | | 910pF | ±5% | CL31C911JBCNNN□ |
| | | 43pF | ±2% | CL31C430GBCNNN□ | | | 1.0nF | ±1% | CL31C102FBCNNN□ |
| | | 43pF | ±5% | CL31C430JBCNNN□ | | | 1.0nF | ±2% | CL31C102GBCNNN□ |
| | | 47pF | ±5% | CL31C470JBCNNN□ | | | 1.0nF | ±5% | CL31C102JBCNNN□ |
| | | 47pF | ±10% | CL31C470KBCNNN□ | | | 1.2nF | ±2% | CL31C122GBCNNN□ |
| | | 51pF | ±5% | CL31C510JBCNNN□ | | | 1.2nF | ±5% | CL31C122JBCNNN□ |
| | | 56pF | ±2% | CL31C560GBCNNN□ | | | 1.5nF | ±2% | CL31C152GBCNNN□ |
| | | 56pF | ±5% | CL31C560JBCNNN□ | | | 1.5nF | ±5% | CL31C152JBCNNN□ |
| | | 62pF | ±5% | CL31C620JBCNNN□ | | | 1.8nF | ±2% | CL31C182GBCNNN□ |
| | | 68pF | ±2% | CL31C680GBCNNN□ | | | 1.8nF | ±5% | CL31C182JBCNNN□ |
| | | 68pF | ±5% | CL31C680JBCNNN□ | | | 2.0nF | ±5% | CL31C202JBCNNN□ |
| | | 82pF | ±5% | CL31C820JBCNNN□ | | | 2.2nF | ±1% | CL31C222FBCNNN□ |
| | | 91pF | ±5% | CL31C910JBCNNN□ | | | 2.2nF | ±2% | CL31C222GBCNNN□ |
| 100pF | ±2% | CL31C101GBCNNN□ | 2.2nF | ±5% | CL31C222JBCNNN□ | | | | |
| 100pF | ±5% | CL31C101JBCNNN□ | 1.40mm | 25Vdc | 4.7nF | ±2% | CL31C472GAFNNN□ | | |
| 100pF | ±10% | CL31C101KBCNNN□ | | | 8.2nF | ±2% | CL31C822GAFNNN□ | | |
| 110pF | ±5% | CL31C111JBCNNN□ | | | 8.2nF | ±5% | CL31C822JAFNNN□ | | |
| 120pF | ±5% | CL31C121JBCNNN□ | | | 10nF | ±2% | CL31C103GAFNNN□ | | |
| 130pF | ±5% | CL31C131JBCNNN□ | | | 10nF | ±5% | CL31C103JAFNNN□ | | |
| 150pF | ±5% | CL31C151JBCNNN□ | | 50Vdc | 2.7nF | ±5% | CL31C272JBFNNN□ | | |
| 160pF | ±5% | CL31C161JBCNNN□ | | | 3.0nF | ±5% | CL31C302JBFNNN□ | | |
| 160pF | ±10% | CL31C161KBCNNN□ | | | 3.3nF | ±1% | CL31C332GFBFNNN□ | | |
| 180pF | ±1% | CL31C181FBCNNN□ | | | 3.3nF | ±2% | CL31C332JBFNNN□ | | |
| 180pF | ±2% | CL31C181GBCNNN□ | | | 3.3nF | ±5% | CL31C332JBFNNN□ | | |
| 180pF | ±5% | CL31C181JBCNNN□ | 3.3nF | ±10% | CL31C332KBFNNN□ | | | | |

* □ mark means packaging code. If you want to learn the code or quantity in detail, please see p.148

Product Line Up (COG)

■ Size : 3.20 X 1.60mm (inch : 1206)

| Thickness Max. | Rated Voltage | Capacitance | Capacitance Tolerance | Part Number | |
|----------------|---------------|-------------|-----------------------|------------------|------------------|
| 1.40mm | 50Vdc | 3.6nF | ±5% | CL31C362JBFNNN □ | |
| | | 3.9nF | ±5% | CL31C392JBFNNN □ | |
| | | 4.7nF | ±1% | CL31C472JBFNNN □ | |
| | | 4.7nF | ±2% | CL31C472GBFNNN □ | |
| | | 4.7nF | ±5% | CL31C472JBFNNN □ | |
| 1.80mm | 16Vdc | 120nF | ±5% | CL31C124JOHNNN □ | |
| | | 25Vdc | 6.8nF | ±2% | CL31C682GAHNNN □ |
| | | | 8.2nF | ±5% | CL31C822JAHNNN □ |
| | | | 10nF | ±5% | CL31C103JAHNNN □ |
| | | | 39nF | ±5% | CL31C393JAHNNN □ |
| | | | 47nF | ±5% | CL31C473JAHNNN □ |
| | | | 56nF | ±5% | CL31C563JAHNNN □ |
| | | | 68nF | ±5% | CL31C683JAHNNN □ |
| | | | 82nF | ±5% | CL31C823JAHNNN □ |
| | | | 100nF | ±5% | CL31C104JAHNNN □ |
| | 50Vdc | | 5.6nF | ±5% | CL31C562JBHNNN □ |
| | | 6.8nF | ±5% | CL31C682JBHNNN □ | |
| | | 10nF | ±2% | CL31C103GBHNNN □ | |
| | | 15nF | ±5% | CL31C153JBHNNN □ | |
| | | 18nF | ±5% | CL31C183JBHNNN □ | |
| 50Vdc | 22nF | ±5% | CL31C223JBHNNN □ | | |
| | 27nF | ±5% | CL31C273JBHNNN □ | | |
| | 33nF | ±5% | CL31C333JBHNNN □ | | |
| | 47nF | ±5% | CL31C473JBHNNN □ | | |

■ Size : 3.20 X 2.50mm (inch : 1210)

| Thickness Max. | Rated Voltage | Capacitance | Capacitance Tolerance | Part Number |
|----------------|---------------|-------------|-----------------------|------------------|
| 1.45mm | 25Vdc | 10nF | ±5% | CL32C103JAFNNN □ |
| | 50Vdc | 1.0nF | ±5% | CL32C102JBFNNN □ |
| | | 1.2nF | ±5% | CL32C122JBFNNN □ |
| | | 1.5nF | ±5% | CL32C152JBFNNN □ |
| | | 1.8nF | ±5% | CL32C182JBFNNN □ |
| | | 2.7nF | ±5% | CL32C272JBFNNN □ |
| | | 3.9nF | ±5% | CL32C392JBFNNN □ |
| | | 4.7nF | ±5% | CL32C472JBFNNN □ |
| | | 5.6nF | ±5% | CL32C562JBFNNN □ |
| | | 6.8nF | ±5% | CL32C682JBFNNN □ |
| | | 8.2nF | ±1% | CL32C822JBFNNN □ |
| | 8.2nF | ±5% | CL32C822JBFNNN □ | |
| | 10nF | ±1% | CL32C103JBFNNN □ | |
| | 10nF | ±2% | CL32C103GBFNNN □ | |
| | 10nF | ±5% | CL32C103JBFNNN □ | |
| 1.80mm | 50Vdc | 11nF | ±5% | CL32C113JBHNNN □ |

※ □ mark means packaging code. If you want to learn the code or quantity in detail, please see p.148

Standard & High Capacitors

Product Line Up (X5R)

■ Size : 1.00 X 0.50mm (inch : 0402)

| Thickness Max. | Rated Voltage | Capacitance | Capacitance Tolerance | Part Number | Remark | Thickness Max. | Rated Voltage | Capacitance | Capacitance Tolerance | Part Number | Remark | |
|----------------|---------------|-----------------|-----------------------|-----------------|-----------------|----------------|---------------|-----------------|-----------------------|-----------------|-----------------|-----------------|
| 0.11mm | 6.3Vdc | 220nF | ±20% | CL05A224MQLHEC□ | | 0.55mm | 16Vdc | 100nF | ±5% | CL05A104J05NNN□ | | |
| 0.22mm | 6.3Vdc | 470nF | ±20% | CL05A474MQXLNN□ | | | | 100nF | ±10% | CL05A104K05NNN□ | | |
| | | 1.0uF | ±20% | CL05A105MQXLNN□ | | | | 100nF | ±20% | CL05A104M05NNN□ | | |
| 0.33mm | 4.0Vdc | 2.2uF | ±20% | CL05A225MR3LRN□ | | | | 220nF | ±10% | CL05A224K05NNN□ | | |
| | 6.3Vdc | 1.0uF | ±20% | CL05A105MQ3LNN□ | | | | 470nF | ±10% | CL05A474K05NNN□ | | |
| | | 2.2uF | ±20% | CL05A225MQ3LRN□ | | | | 1.0uF | ±10% | CL05A105K05NNN□ | | |
| 0.35mm | 6.3Vdc | 4.7uF | ±20% | CL05A475MQ3LUN□ | | | | 4.2uF | ±10% | CL05A425K05LUN□ | | |
| 0.55mm | 4.0Vdc | 100nF | ±20% | CL05A104MR5NNN□ | | | | 25Vdc | 100nF | ±10% | CL05A104KA5NNN□ | |
| | | 1.0uF | ±20% | CL05A105MR5NNN□ | | | | | 220nF | ±10% | CL05A224KA5NNN□ | |
| | | 1.3uF | ±10% | CL05A135KR5NNN□ | | | | | 330nF | ±10% | CL05A334KA5NNN□ | |
| | | 1.4uF | ±10% | CL05A145KR5NNN□ | | 330nF | ±20% | | CL05A334MA5NNN□ | | | |
| | | 1.5uF | ±10% | CL05A155KR5NNN□ | | 470nF | ±10% | | CL05A474KA5NNN□ | | | |
| | | 1.7uF | ±10% | CL05A175KR5NNN□ | | 1.0uF | ±10% | | CL05A105KA5NNN□ | | | |
| | | 1.8uF | ±10% | CL05A185KR5NNN□ | | | | | | | | |
| | | 2.2uF | ±20% | CL05A225MR5NNN□ | | | | | | | | |
| | | 3.3uF | ±20% | CL05A335MR5NNN□ | | | | | | | | |
| | | 6.3Vdc | 100nF | ±10% | CL05A104KQ5NNN□ | | 0.57mm | | 4.0Vdc | 2.2uF | ±20% | CL05A225MR5NSN□ |
| | 100nF | ±20% | CL05A104MQ5NNN□ | | 6.3Vdc | 2.2uF | | ±10% | CL05A225KQ5NSN□ | | | |
| | 120nF | ±10% | CL05A124KQ5NNN□ | | | | 2.2uF | ±20% | CL05A225MQ5NSN□ | | | |
| | 150nF | ±10% | CL05A154KQ5NNN□ | | 10Vdc | 2.2uF | ±10% | CL05A225KP5NSN□ | | | | |
| | 220nF | ±5% | CL05A224JQ5NNN□ | | | 2.2uF | ±20% | CL05A225MP5NSN□ | | | | |
| | 220nF | ±10% | CL05A224KQ5NNN□ | | 0.60mm | 4.0Vdc | 4.7uF | ±20% | CL05A475MR5NQ□ | | | |
| | 220nF | ±20% | CL05A224MQ5NNN□ | | | 6.3Vdc | 4.7uF | ±20% | CL05A475MQ5NQ□ | | | |
| | 330nF | ±10% | CL05A334KQ5NNN□ | | | 16Vdc | 2.2uF | ±10% | CL05A225K05NQ□ | | | |
| | 330nF | ±20% | CL05A334MQ5NNN□ | | | | 2.2uF | ±20% | CL05A225M05NQ□ | | | |
| | 470nF | ±10% | CL05A474KQ5NNN□ | | 25Vdc | 1uF | ±10% | CL05A105KA5NQ□ | | | | |
| | 680nF | ±10% | CL05A684KQ5NNN□ | | | 1uF | ±20% | CL05A105MA5NQ□ | | | | |
| 1.0uF | ±5% | CL05A105JQ5NNN□ | | 0.65mm | 4.0Vdc | 10uF | ±20% | CL05A106MR5NR□ | | | | |
| 1.0uF | ±10% | CL05A105KQ5NNN□ | | | 6.3Vdc | 4.7uF | ±10% | CL05A475KQ5NR□ | | | | |
| 1.0uF | ±20% | CL05A105MQ5NNN□ | | | | 4.7uF | ±20% | CL05A475MQ5NR□ | | | | |
| 2.2uF | ±10% | CL05A225KQ5NNN□ | | | | 10uF | ±20% | CL05A106MQ5NR□ | | | | |
| 2.2uF | ±20% | CL05A225MQ5NNN□ | | | 10Vdc | 13uF | ±20% | CL05A136MQ5NR□ | | | | |
| 4.7uF | ±10% | CL05A474KQ5NNN□ | | | | 4.7uF | ±10% | CL05A475KP5NR□ | | | | |
| 10nF | ±10% | CL05A103KP5NNN□ | | | | 4.7uF | ±20% | CL05A475MP5NR□ | | | | |
| 47nF | ±10% | CL05A473KP5NNN□ | | | 35Vdc | 10uF | ±20% | CL05A106MP5NR□ | | | | |
| 47nF | ±20% | CL05A473MP5NNN□ | | | | 1uF | ±10% | CL05A105KL5NR□ | | | | |
| 68nF | ±10% | CL05A683KP5NNN□ | | | 0.70mm | 4.0Vdc | 2.2uF | ±20% | CL05A225MR5NUN□ | | | |
| 82nF | ±10% | CL05A823KP5NNN□ | | | | 10uF | ±20% | CL05A106MR5NUN□ | | | | |
| 100nF | ±10% | CL05A104KP5NNN□ | | 6.3Vdc | | 10uF | ±20% | CL05A106MQ5NUN□ | | | | |
| 100nF | ±20% | CL05A104MP5NNN□ | | | | 22uF | ±20% | CL05A226MQ5QUN□ | | | | |
| 150nF | ±10% | CL05A154KP5NNN□ | | 10Vdc | | 10uF | ±20% | CL05A106MP5NUN□ | | | | |
| 220nF | ±10% | CL05A224KP5NNN□ | | 16Vdc | | 4.7uF | ±20% | CL05A475M05NUN□ | | | | |
| 220nF | ±20% | CL05A224MP5NNN□ | | | | 2.2uF | ±10% | CL05A225KA5NUN□ | | | | |
| 330nF | ±10% | CL05A334KP5NNN□ | | | | 2.2uF | ±20% | CL05A225MA5NUN□ | | | | |
| 330nF | ±20% | CL05A334MP5NNN□ | | 25Vdc | | 2.2uF | ±20% | CL05A226MQ5N6J□ | | | | |
| 470nF | ±10% | CL05A474KP5NNN□ | | | | 0.75mm | 6.3Vdc | 22uF | ±20% | CL05A226MQ5N6J□ | | |
| 1.0uF | ±5% | CL05A105JP5NNN□ | | 0.80mm | 6.3Vdc | 22uF | ±20% | CL05A226MQ6NUN□ | | | | |
| 1.0uF | ±10% | CL05A105KP5NNN□ | | | | 10Vdc | 10uF | ±20% | CL05A106MP6NUN□ | | | |
| 1.0uF | ±20% | CL05A105MP5NNN□ | | 0.85mm | 6.3Vdc | 22uF | ±20% | CL05A226MQ6N6J□ | | | | |
| 2.2uF | ±10% | CL05A225KP5NNN□ | | | | 0.90mm | 4.0Vdc | 22uF | ±20% | CL05A226MR5NZN□ | | |
| 2.2uF | ±20% | CL05A225MP5NNN□ | | | | | | | | | | |
| 4.7nF | ±10% | CL05A472K05NNN□ | | | | | | | | | | |
| 22nF | ±10% | CL05A223K05NNN□ | | | | | | | | | | |
| 47nF | ±10% | CL05A473K05NNN□ | | | | | | | | | | |
| 47nF | ±20% | CL05A473M05NNN□ | | | | | | | | | | |

※ □ mark means packaging code. If you want to learn the code or quantity in detail, please see p.148

Product Line Up (X5R)

■ Size : 1.60 X 0.80mm (inch : 0603)

| Thickness Max. | Rated Voltage | Capacitance | Capacitance Tolerance | Part Number | Remark | Thickness Max. | Rated Voltage | Capacitance | Capacitance Tolerance | Part Number | Remark | |
|----------------|---------------|-------------|-----------------------|------------------|------------------|----------------|---------------|------------------|-----------------------|------------------|------------------|------------------|
| 0.50mm | 4.0Vdc | 10uF | ±20% | CL10A106MR5LQN□ | Derating Ref. | 0.90mm | 16Vdc | 1.0uF | ±10% | CL10A105K08N8NN□ | | |
| | | 6.3Vdc | 2.2uF | ±10% | CL10A225KQ5LNN□ | | | | 1.0uF | ±20% | CL10A105M08N8NN□ | |
| | | | 4.7uF | ±10% | CL10A475KQ5LNN□ | | | | 2.2uF | ±10% | CL10A225K08N8NN□ | |
| | | | 4.7uF | ±20% | CL10A475MQ5LNN□ | | | | 4.7uF | ±10% | CL10A475K08N8NN□ | Derating |
| | 10uF | | ±20% | CL10A106MQ5LNR□ | Derating Ref. | | | 4.7uF | ±20% | CL10A475M08N8NN□ | Derating | |
| | 10Vdc | 1.0uF | ±10% | CL10A105KP5LNN□ | | | | 25Vdc | 100nF | ±10% | CL10A104K8N8NN□ | |
| | | 2.2uF | ±10% | CL10A225KP5LNN□ | | | 220nF | | ±10% | CL10A224K8N8NN□ | | |
| | | 4.7uF | ±10% | CL10A475KP5LNN□ | Derating | | 220nF | | ±20% | CL10A224MA8N8NN□ | | |
| | | 4.7uF | ±20% | CL10A475MP5LNN□ | Derating | | 330nF | | ±10% | CL10A334K8N8NN□ | | |
| | 16Vdc | 1.0uF | ±10% | CL10A105K05LNN□ | | | 470nF | | ±10% | CL10A474K8N8NN□ | | |
| | | 2.2uF | ±10% | CL10A225K05LNN□ | Derating | | 1.0uF | | ±10% | CL10A105K8N8NN□ | | |
| | | 25Vdc | 1.0uF | ±10% | CL10A105K8N8NN□ | | Derating | 2.2uF | ±10% | CL10A225K8N8NN□ | Derating | |
| 2.2uF | | | ±10% | CL10A225K8N8NN□ | Derating | 35Vdc | 1.0uF | ±10% | CL10A105K8N8NN□ | | | |
| 0.60mm | 6.3Vdc | 4.7uF | ±10% | CL10A475KQ5N8NN□ | | | 2.2uF | ±10% | CL10A225K8N8NN□ | Derating | | |
| | | 4.7uF | ±20% | CL10A475MQ5N8NN□ | | | 50Vdc | 100nF | ±10% | CL10A104K8N8NN□ | | |
| 0.80mm | 6.3Vdc | 22uF | ±20% | CL10A226MQ7LUN□ | Derating | | | 220nF | ±10% | CL10A224K8N8NN□ | | |
| | | 10Vdc | 22uF | ±20% | CL10A226MP7LUN□ | | | Derating | 470nF | ±10% | CL10A474K8N8NN□ | |
| | | 16Vdc | 22uF | ±20% | CL10A226M07JZN□ | | | Derating | 1.0uF | ±10% | CL10A105K8N8NN□ | |
| 0.90mm | 4.0Vdc | 2.2uF | ±20% | CL10A225MR8N8NN□ | | 0.95mm | 4.0Vdc | 22uF | ±20% | CL10A226MR8NQN□ | Derating | |
| | | 4.7uF | ±20% | CL10A475MR8N8NN□ | Derating | | | 6.3Vdc | 4.7uF | ±20% | CL10A475MQ8NQN□ | |
| | | 10uF | ±10% | CL10A106KR8N8NN□ | Derating Ref. | | 10uF | | ±20% | CL10A106MQ8NQN□ | | |
| | | 10uF | ±20% | CL10A106MR8N8NN□ | Derating Ref. | | 16Vdc | 4.7uF | ±10% | CL10A475K08NQN□ | Derating | |
| | | 22uF | ±20% | CL10A226MR8N8NN□ | Derating | | | 10uF | ±10% | CL10A106K08NQN□ | Derating Ref. | |
| | 6.3Vdc | 470nF | ±10% | CL10A474KQ8N8NN□ | | | | 10uF | ±20% | CL10A106M08NQN□ | Derating Ref. | |
| | | 470nF | ±20% | CL10A474MQ8N8NN□ | | | | 25Vdc | 4.7uF | ±10% | CL10A475K8NQN□ | Derating |
| | | 680nF | ±10% | CL10A684KQ8N8NN□ | | | 4.7uF | | ±20% | CL10A475MA8NQN□ | Derating | |
| | | 1.0uF | ±10% | CL10A105KQ8N8NN□ | | | 1.00mm | 4.0Vdc | 47uF | ±20% | CL10A476MR8N8NN□ | Derating Ref. |
| | | 1.0uF | ±20% | CL10A105MQ8N8NN□ | | | | | 6.3Vdc | 10uF | ±20% | CL10A106MQ8N8NN□ |
| | | 2.2uF | ±10% | CL10A225KQ8N8NN□ | | | | 22uF | | ±10% | CL10A226KQ8N8NN□ | Derating |
| | 2.2uF | ±20% | CL10A225MQ8N8NN□ | | 22uF | | | ±20% | | CL10A226MQ8N8NN□ | Derating | |
| | 3.3uF | ±10% | CL10A335KQ8N8NN□ | | 47uF | ±20% | | CL10A476MQ8Q8NN□ | | Derating | | |
| | 3.3uF | ±20% | CL10A335MQ8N8NN□ | | 10Vdc | 22uF | | ±20% | CL10A226MP8N8NN□ | Derating | | |
| | 4.7uF | ±10% | CL10A475KQ8N8NN□ | | | 25Vdc | 10uF | ±20% | CL10A106MA8N8NN□ | Derating Ref. | | |
| | 4.7uF | ±20% | CL10A475MQ8N8NN□ | | 35Vdc | | 4.7uF | ±10% | CL10A475K8N8NN□ | Derating | | |
| | 10uF | ±10% | CL10A106KQ8N8NN□ | Ref. | | 1.05mm | 6.3Vdc | 22uF | ±20% | CL10A226MQ8NUN□ | Derating | |
| | 10uF | ±20% | CL10A106MQ8N8NN□ | Ref. | 10Vdc | | | 22uF | ±20% | CL10A226MP8NUN□ | Derating | |
| | 22uF | ±20% | CL10A226MQ7N8NN□ | Ref. | | | 1.10mm | 4.0Vdc | 47uF | ±20% | CL10A476MR8N8NN□ | Derating Ref. |
| | 10Vdc | 220nF | ±10% | CL10A224KP8N8NN□ | | | | | 6.3Vdc | 47uF | ±20% | CL10A476MQ8C8NN□ |
| | | 330nF | ±10% | CL10A334KP8N8NN□ | | | 1.10mm | 4.0Vdc | | 47uF | ±20% | CL10A476MR8N8NN□ |
| | | 470nF | ±10% | CL10A474KP8N8NN□ | | | | | 470nF | ±10% | CL10A474KP8N8NN□ | |
| | | 680nF | ±10% | CL10A684KP8N8NN□ | | 680nF | | | ±10% | CL10A684KP8N8NN□ | | |
| | | 820nF | ±10% | CL10A824KP8N8NN□ | | 820nF | | | ±10% | CL10A824KP8N8NN□ | | |
| | | 1.0uF | ±10% | CL10A105KP8N8NN□ | | 1.0uF | | | ±10% | CL10A105KP8N8NN□ | | |
| | | 1.0uF | ±20% | CL10A105MP8N8NN□ | | 1.0uF | | | ±20% | CL10A105MP8N8NN□ | | |
| | | 2.2uF | ±10% | CL10A225KP8N8NN□ | | 2.2uF | | | ±10% | CL10A225KP8N8NN□ | | |
| | | 2.2uF | ±20% | CL10A225MP8N8NN□ | | 2.2uF | | | ±20% | CL10A225MP8N8NN□ | | |
| | | 3.3uF | ±10% | CL10A335KP8N8NN□ | | 3.3uF | | | ±10% | CL10A335KP8N8NN□ | | |
| | | 3.3uF | ±20% | CL10A335MP8N8NN□ | | 3.3uF | | | ±20% | CL10A335MP8N8NN□ | | |
| | | 4.7uF | ±10% | CL10A475KP8N8NN□ | | 4.7uF | | | ±10% | CL10A475KP8N8NN□ | | |
| | | 4.7uF | ±20% | CL10A475MP8N8NN□ | | 4.7uF | | | ±20% | CL10A475MP8N8NN□ | | |
| | | 10uF | ±10% | CL10A106KP8N8NN□ | Derating Ref. | 10uF | | | ±10% | CL10A106KP8N8NN□ | Derating Ref. | |
| | | 10uF | ±20% | CL10A106MP8N8NN□ | Derating Ref. | 10uF | | | ±20% | CL10A106MP8N8NN□ | Derating Ref. | |
| | | 16Vdc | 330nF | ±10% | CL10A334K08N8NN□ | | | | 330nF | ±10% | CL10A334K08N8NN□ | |
| | | | 470nF | ±10% | CL10A474K08N8NN□ | | | | 470nF | ±10% | CL10A474K08N8NN□ | |

※ □ mark means packaging code. If you want to learn the code or quantity in detail, please see p.148

Standard & High Capacitors

Product Line Up (X5R)

■ Size : 2.00 X 1.25mm (inch : 0805)

| Thickness Max. | Rated Voltage | Capacitance | Capacitance Tolerance | Part Number | Remark | Thickness Max. | Rated Voltage | Capacitance | Capacitance Tolerance | Part Number | Remark |
|----------------|---------------|------------------|-----------------------|------------------|----------|----------------|------------------|------------------|-----------------------|------------------|------------------|
| 0.70mm | 10Vdc | 2.2uF | ±10% | CL21A225KP6LNN □ | | 1.35mm | 6.3Vdc | 2.2uF | ±20% | CL21A225MQFNNN □ | |
| | | 1.0uF | ±20% | CL21A105M06LNN □ | | | | 3.3uF | ±10% | CL21A335KQFNNN □ | |
| | 2.2uF | ±10% | CL21A225K06LNN □ | | 3.3uF | | | ±20% | CL21A335MQFNNN □ | | |
| 0.80mm | 6.3Vdc | 10uF | ±10% | CL21A106KQ7LQN □ | | | | 4.7uF | ±10% | CL21A475KQFNNN □ | |
| | | 47uF | ±20% | CL21A476MQ7FRN □ | Derating | | | 4.7uF | ±20% | CL21A475MQFNNN □ | |
| | | 47uF | ±20% | CL21A476MQ7LRN □ | Derating | | | 6.8uF | ±10% | CL21A685KQFNNN □ | |
| | 10Vdc | 10uF | ±10% | CL21A106KP7LQN □ | Derating | | | 10uF | ±10% | CL21A106KQFNNN □ | |
| 0.90mm | 6.3Vdc | 47uF | ±20% | CL21A476MQ8LRN □ | Derating | | | 10uF | ±20% | CL21A106MQFNNN □ | |
| 0.95mm | 4.0Vdc | 22uF | ±20% | CL21A226MRCLRN □ | Derating | | | 10Vdc | 1.0uF | ±10% | CL21A105KQFNNN □ |
| | | 47uF | ±20% | CL21A476MRCLRP □ | Derating | | 2.2uF | | ±10% | CL21A225KQFNNN □ | |
| 6.3Vdc | 1.0uF | ±10% | CL21A105KQCLNN □ | | 2.2uF | | ±20% | | CL21A225MPFNNN □ | | |
| | 1.0uF | ±10% | CL21A105KQCNN □ | | 2.2uF | | ±20% | | CL21A225MPFNNN □ | | |
| | 4.7uF | ±10% | CL21A475KQCLNN □ | | 3.3uF | | ±10% | | CL21A335KQFNNN □ | | |
| | 4.7uF | ±20% | CL21A475MQCLNN □ | | 4.7uF | | ±10% | | CL21A475KQFNNN □ | | |
| | 10uF | ±10% | CL21A106KQCLNN □ | | 4.7uF | | ±20% | | CL21A475MPFNNN □ | | |
| | 10uF | ±10% | CL21A106KQCLRN □ | | 10uF | | ±10% | | CL21A106KQFNNN □ | | |
| | 10uF | ±20% | CL21A106MQCLNN □ | | 10uF | | ±20% | | CL21A106MPFNNN □ | | |
| | 22uF | ±10% | CL21A226KQCLRN □ | Derating | 22uF | | ±10% | CL21A684KQFNNN □ | | | |
| | 22uF | ±20% | CL21A226MQCLQN □ | Derating | 1.0uF | ±10% | CL21A105KQFNNN □ | | | | |
| | 22uF | ±20% | CL21A226MQCLRN □ | Derating | 2.2uF | ±10% | CL21A225KQFNNN □ | | | | |
| | 47uF | ±20% | CL21A476MQCLRN □ | Derating | 2.2uF | ±20% | CL21A225MOFNNN □ | | | | |
| | 10Vdc | 2.2uF | ±10% | CL21A225KQCLNN □ | | 16Vdc | 3.3uF | ±10% | CL21A335KQFNNN □ | | |
| 4.7uF | | ±10% | CL21A475KQCLNN □ | | 4.7uF | | ±10% | CL21A475KQFNNN □ | | | |
| 4.7uF | | ±20% | CL21A475MPCLNN □ | | 10uF | | ±10% | CL21A106KQFNNN □ | Derating | | |
| 10uF | | ±10% | CL21A106KQCLNN □ | Derating | 25Vdc | | 470nF | ±20% | CL21A474MAFNNN □ | | |
| 10uF | | ±10% | CL21A106KQCLQN □ | Derating | | | 1.0uF | ±10% | CL21A105KQFNNN □ | | |
| 10uF | | ±20% | CL21A106MPCLNN □ | Derating | | | 2.2uF | ±10% | CL21A225KQFNNN □ | | |
| 10uF | | ±20% | CL21A106MPCLQN □ | Derating | 50Vdc | | 1.0uF | ±10% | CL21A105KQFNNN □ | Derating | |
| 10uF | | ±20% | CL21A106MPCLRN □ | Derating | | | 2.2uF | ±10% | CL21A225KQFNNN □ | Derating | |
| 22uF | | ±10% | CL21A226KQCLRN □ | Derating | | | 1.40mm | 4.0Vdc | 22uF | ±20% | CL21A226MRQNNN □ |
| 22uF | | ±20% | CL21A226MPCLRN □ | Derating | 6.3Vdc | 47uF | | | ±20% | CL21A476MRQNNN □ | Derating |
| 22uF | | +80/-20% | CL21A226ZPCLRN □ | Derating | | 4.7uF | | | ±10% | CL21A475KQQNNN □ | Derating |
| 16Vdc | | 2.2uF | ±10% | CL21A225KQCLNN □ | | | | 10uF | ±10% | CL21A106KQQNNN □ | Derating |
| | 4.7uF | ±10% | CL21A475KQCLNN □ | | 22uF | ±10% | | CL21A226KQQNNN □ | | | |
| | 4.7uF | ±10% | CL21A475KQCLRN □ | | 22uF | ±20% | | CL21A226MQQNNN □ | | | |
| | 10uF | ±10% | CL21A106KQCLNN □ | Derating | 10Vdc | 22uF | | ±20% | CL21A226MPQNNN □ | | |
| | 10uF | ±10% | CL21A106KQCLRN □ | Derating | | 16Vdc | | 10uF | ±10% | CL21A106KQQNNN □ | Derating |
| | 10uF | ±10% | CL21A106KQCLSN □ | Derating | | | | 22uF | ±10% | CL21A226KQQNNN □ | Derating |
| 22uF | ±20% | CL21A226MOCLRN □ | Derating | 22uF | ±20% | | | CL21A226MOQNNN □ | Derating | | |
| 25Vdc | 1.0uF | ±10% | CL21A105KQCLNN □ | | 25Vdc | 4.7uF | | ±10% | CL21A475KQQNNN □ | Derating | |
| | 1.0uF | ±10% | CL21A105KQCLRN □ | | | 4.7uF | | ±20% | CL21A475MAQNNN □ | Derating | |
| | 2.2uF | ±10% | CL21A225KQCLNN □ | Derating | | 22uF | ±20% | CL21A226MAQNNN □ | Derating | | |
| | 4.7uF | ±10% | CL21A475KQCLRN □ | Derating | 50Vdc | 2.2uF | ±10% | CL21A225KQQNNN □ | Derating | | |
| 10uF | ±10% | CL21A106KQCLRN □ | Derating | 4.7uF | | ±10% | CL21A475KQQNNN □ | Derating | | | |
| 10uF | ±10% | CL21A106KQCLSN □ | Derating | 4.7uF | | ±20% | CL21A475MAQNNN □ | Derating | | | |
| 35Vdc | 4.7uF | ±10% | CL21A475KQCLQN □ | Derating | 50Vdc | 2.2uF | ±10% | CL21A225KQQNNN □ | Derating | | |
| | 1.0uF | ±10% | CL21A105KQCLNN □ | | | 4.7uF | ±10% | CL21A475KQQNNN □ | Derating | | |
| 50Vdc | 1.0uF | ±10% | CL21A105KQCLRN □ | | 1.45mm | 4.0Vdc | 47uF | ±20% | CL21A476MRYNNN □ | | |
| | 1.0uF | ±10% | CL21A105KQCLSN □ | | | | 6.3Vdc | 47uF | ±10% | CL21A476KQYNNN □ | Derating |
| | 1.0uF | ±10% | CL21A105KQCLRN □ | | | | | 47uF | ±20% | CL21A476MQYNNN □ | Derating |
| 1.00mm | 6.3Vdc | 33uF | ±20% | CL21A336MQ9LRN □ | Derating | 10uF | ±10% | CL21A106KAYNNN □ | Derating | | |
| | | 47uF | ±20% | CL21A476MQ9LRN □ | Derating | 25Vdc | 47uF | ±20% | CL21A476KQYNNN □ | Derating | |
| | 50Vdc | 2.2uF | ±10% | CL21A225KB9LNN □ | Derating | | | | | | |
| 1.20mm | 6.3Vdc | 33uF | ±20% | CL21A336MQELRN □ | Derating | | | | | | |
| | 10Vdc | 2.2uF | ±10% | CL21A225KPENNN □ | | | | | | | |
| 1.25mm | 6.3Vdc | 47uF | ±20% | CL21A476MQMNRN □ | Derating | | | | | | |
| 1.35mm | 4.0Vdc | 10uF | ±20% | CL21A106MRFNNN □ | | | | | | | |
| | 6.3Vdc | 2.2uF | ±10% | CL21A225KQFNNN □ | | | | | | | |

* □ mark means packaging code. If you want to learn the code or quantity in detail, please see p.148

Product Line Up (X5R)

■ Size : 3.20 X 1.60mm (inch : 1206)

| Thickness Max. | Rated Voltage | Capacitance | Capacitance Tolerance | Part Number | Remark | |
|----------------|---------------|------------------|-----------------------|------------------|------------------|--|
| 0.95mm | 6.3Vdc | 10uF | ±20% | CL31A106MQCLNN □ | | |
| | | 22uF | ±10% | CL31A226KQCLNN □ | Derating | |
| | | 22uF | ±20% | CL31A226MQCLNN □ | Derating | |
| | 10Vdc | 10uF | ±10% | CL31A106KPCLNN □ | | |
| | | 10uF | ±20% | CL31A106MPCLNN □ | | |
| | 16Vdc | 2.2uF | ±10% | CL31A225KQCLNN □ | | |
| | | 4.7uF | ±10% | CL31A475KQCLNN □ | | |
| | | 4.7uF | ±20% | CL31A475MOCLNN □ | | |
| | | 10uF | ±10% | CL31A106KQCLNN □ | | |
| | | 22uF | ±10% | CL31A226KQCLNN □ | Derating | |
| | | 22uF | ±20% | CL31A226MOCLNN □ | Derating | |
| | 25Vdc | 4.7uF | ±10% | CL31A475KACLNN □ | | |
| | | 10uF | ±10% | CL31A106KACLNN □ | Derating | |
| | | 10uF | ±20% | CL31A106MACLNN □ | Derating | |
| 1.00mm | 35Vdc | 4.7uF | ±10% | CL31A475KL9LNN □ | Derating | |
| | 50Vdc | 1.0uF | ±10% | CL31A105KB9LNN □ | | |
| | | 2.2uF | ±10% | CL31A225KB9LNN □ | | |
| | | 4.7uF | ±10% | CL31A475KB9LNN □ | Derating | |
| 100Vdc | 2.2uF | ±10% | CL31A225KC9LNN □ | Derating | | |
| 1.20mm | 16Vdc | 4.7uF | ±10% | CL31A475KOELNN □ | | |
| 1.25mm | 10Vdc | 10uF | ±10% | CL31A106KPPLNN □ | | |
| | | 10uF | ±20% | CL31A106MPPLNN □ | | |
| | 16Vdc | 4.7uF | ±10% | CL31A475KOPLNN □ | | |
| | | 4.7uF | ±20% | CL31A475MOPLNN □ | | |
| | 25Vdc | 1.0uF | ±10% | CL31A105KAPLNN □ | | |
| | | 2.2uF | ±10% | CL31A225KAPLNN □ | | |
| 4.7uF | ±10% | CL31A475KAPLNN □ | | | | |
| 1.70mm | 50Vdc | 2.2uF | ±10% | CL31A225KBTLNN □ | | |
| 1.80mm | 6.3Vdc | 3.3uF | ±10% | CL31A335KQHNNN □ | | |
| | | 10uF | ±10% | CL31A106KQHNNN □ | | |
| | | 10uF | ±20% | CL31A106MQHNNN □ | | |
| | | 15uF | ±10% | CL31A156KQHNNN □ | | |
| | | 15uF | ±20% | CL31A156MQHNNN □ | | |
| | | 22uF | ±10% | CL31A226KQHNNN □ | | |
| | | 22uF | ±20% | CL31A226MQHNNN □ | | |
| | | 33uF | ±20% | CL31A336MQHNNN □ | | |
| | | 47uF | ±10% | CL31A476KQHNNN □ | | |
| | | 47uF | ±20% | CL31A476MQHNNN □ | | |
| | | 100uF | ±20% | CL31A107MQHNNN □ | Derating | |
| | | 10Vdc | 3.3uF | ±10% | CL31A335KPHNNN □ | |
| | | | 4.7uF | ±10% | CL31A475KPHNNN □ | |
| | | | 10uF | ±10% | CL31A106KPHNNN □ | |
| | 10uF | | ±20% | CL31A106MPHNNN □ | | |
| | 22uF | | ±10% | CL31A226KPHNNN □ | | |
| | 22uF | | ±20% | CL31A226MPHNNN □ | | |
| | 47uF | | ±20% | CL31A476MPHNNN □ | Derating | |
| | 100uF | ±20% | CL31A107MPHNNN □ | Derating | | |
| | 16Vdc | 2.2uF | ±10% | CL31A225KOHNNN □ | | |
| | | 3.3uF | ±10% | CL31A335KOHNNN □ | | |
| | | 3.3uF | ±20% | CL31A335MOHNNN □ | | |
| | | 4.7uF | ±10% | CL31A475KOHNNN □ | | |
| | | 4.7uF | ±20% | CL31A475MOHNNN □ | | |
| | | 10uF | ±10% | CL31A106KOHNNN □ | | |
| | | 10uF | ±20% | CL31A106MOHNNN □ | | |
| | | 22uF | ±10% | CL31A226KOHNNN □ | Derating | |
| | | 22uF | ±20% | CL31A226MOHNNN □ | Derating | |
| 47uF | | ±10% | CL31A476KOHNNN □ | Derating | | |

| Thickness Max. | Rated Voltage | Capacitance | Capacitance Tolerance | Part Number | Remark |
|----------------|---------------|-------------|-----------------------|------------------|----------|
| 1.80mm | 16Vdc | 22uF | ±20% | CL31A226MOHNNN □ | Derating |
| | 25Vdc | 2.2uF | ±10% | CL31A225KAHNNN □ | |
| | | 3.3uF | ±10% | CL31A335KAHNNN □ | |
| | | 4.7uF | ±10% | CL31A475KAHNNN □ | |
| | | 10uF | ±10% | CL31A106KAHNNN □ | |
| | | 10uF | ±20% | CL31A106MAHNNN □ | |
| | | 22uF | ±10% | CL31A226KAHNNN □ | Derating |
| | 22uF | ±20% | CL31A226MAHNNN □ | Derating | |
| | 35Vdc | 2.2uF | ±10% | CL31A225KLHNNN □ | |
| | | 2.2uF | ±10% | CL31A225KBHNNN □ | |
| | 50Vdc | 4.7uF | ±10% | CL31A475KBHNNN □ | |
| | | 10uF | ±10% | CL31A106KBHNNN □ | |
| | | 10uF | ±20% | CL31A106MBHNNN □ | |

■ Size : 3.20 X 2.50mm (inch : 1210)

| Thickness Max. | Rated Voltage | Capacitance | Capacitance Tolerance | Part Number | Remark |
|----------------|---------------|------------------|-----------------------|------------------|----------|
| 0.95mm | 16Vdc | 10uF | ±10% | CL32A106KQCLNN □ | |
| | | 22uF | ±20% | CL32A226MOCLNN □ | Derating |
| 1.00mm | 25Vdc | 10uF | ±10% | CL32A106KA9LNN □ | |
| 1.25mm | 16Vdc | 10uF | ±10% | CL32A106KOMLNN □ | |
| | | 22uF | ±10% | CL32A226KPSLNN □ | |
| 1.50mm | 10Vdc | 22uF | ±10% | CL32A226MPSLNN □ | |
| | | 22uF | ±20% | CL32A226MPSLNN □ | |
| 25Vdc | 6.8uF | ±10% | CL32A685KASLNN □ | | |
| | | ±10% | CL32A685KASLNN □ | | |
| 1.70mm | 16Vdc | 22uF | ±10% | CL32A226KOTFNN □ | Derating |
| | | 22uF | ±20% | CL32A226MOTLNN □ | Derating |
| | 25Vdc | 10uF | ±10% | CL32A106KATLNN □ | |
| | | 10uF | ±20% | CL32A106MATLNN □ | |
| 2.00mm | 25Vdc | 4.7uF | ±10% | CL32A475KAULNN □ | |
| | | 10uF | ±10% | CL32A106KAULNN □ | |
| | | 10uF | ±20% | CL32A106MLULNN □ | |
| | 35Vdc | 4.7uF | ±10% | CL32A475KLULNN □ | |
| | | 10uF | ±10% | CL32A106KLULNN □ | |
| | | 10uF | ±20% | CL32A106MLULNN □ | |
| 2.20mm | 10Vdc | 10uF | ±10% | CL32A106KPINNN □ | |
| | | 10uF | ±10% | CL32A106KOILNN □ | |
| | 25Vdc | 2.2uF | ±20% | CL32A225MAINNN □ | |
| | | 4.7uF | ±10% | CL32A475KAINNN □ | |
| | | 10uF | ±10% | CL32A106KAILNN □ | |
| | | 10uF | ±20% | CL32A106MAILNN □ | |
| 2.70mm | 6.3Vdc | 22uF | ±10% | CL32A226KQJNNN □ | |
| | | 22uF | ±20% | CL32A226MQJNNN □ | |
| | | 33uF | ±20% | CL32A336MQJNNN □ | |
| | | 47uF | ±10% | CL32A476KQJNNN □ | |
| | | 47uF | ±20% | CL32A476MQJNNN □ | |
| | | 47uF | ±20% | CL32A476KQJNNN □ | |
| | 10Vdc | 22uF | ±10% | CL32A226KPJNNN □ | |
| | | 22uF | ±20% | CL32A226MPJNNN □ | Derating |
| | | 47uF | ±10% | CL32A476KPJNNN □ | Derating |
| | | 47uF | ±20% | CL32A476MPJNNN □ | Derating |
| | 16Vdc | 10uF | ±10% | CL32A106KOJNNN □ | |
| | | 10uF | ±20% | CL32A106MOJNNN □ | |
| | | 22uF | ±10% | CL32A226KOJNNN □ | |
| | | 22uF | ±20% | CL32A226MOJNNN □ | |
| 47uF | ±10% | CL32A476KOJNNN □ | | | |

※ □ mark means packaging code. If you want to learn the code or quantity in detail, please see p.148

Standard & High Capacitors

Product Line Up (X5R)

■ Size : 3.20 X 2.50mm (inch : 1210)

| Thickness Max. | Rated Voltage | Capacitance | Capacitance Tolerance | Part Number | Remark | |
|----------------|---------------|-------------|-----------------------|---------------------------|---------------------------|----------|
| 2.70mm | 16Vdc | 47uF | ±20% | CL32A476MOJN [□] | | |
| | | 25Vdc | 10uF | ±10% | CL32A106KAJN [□] | |
| | | | 10uF | ±20% | CL32A106MAJN [□] | |
| | | | 22uF | ±10% | CL32A226KAJN [□] | |
| | 35Vdc | 22uF | ±20% | CL32A226MAJN [□] | | |
| | | 10uF | ±10% | CL32A106KJN [□] | | |
| | 50Vdc | 2.2uF | ±10% | CL32A225KBJN [□] | | |
| | | 10uF | ±10% | CL32A106KBJN [□] | | |
| | | 10uF | ±20% | CL32A106MBJN [□] | | |
| | 2.80mm | 6.3Vdc | 100uF | ±20% | CL32A107MQV [□] | Derating |
| 150uF | | | ±20% | CL32A157MQV [□] | Derating | |
| 220uF | | | ±20% | CL32A227MQV [□] | Derating | |
| 10Vdc | | 100uF | ±20% | CL32A107MPV [□] | Derating | |

■ Size : 4.50 X 3.20mm (inch : 1812)

| Thickness Max. | Rated Voltage | Capacitance | Capacitance Tolerance | Part Number | Remark |
|----------------|---------------|-------------|-----------------------|---------------------------|--------|
| 2.70mm | 6.3Vdc | 33uF | ±20% | CL43A336MQJN [□] | |
| | | 47uF | ±10% | CL43A476KQJN [□] | |
| | | 47uF | ±20% | CL43A476MQJN [□] | |
| 3.50mm | 6.3Vdc | 100uF | ±20% | CL43A107MQLN [□] | |

■ Size : 5.70 X 5.00mm (inch : 2220)

| Thickness Max. | Rated Voltage | Capacitance | Capacitance Tolerance | Part Number | Remark |
|----------------|---------------|-------------|-----------------------|---------------------------|---------------------------|
| 2.70mm | 6.3Vdc | 47uF | ±20% | CL55A476MQJN [□] | |
| | | 68uF | ±20% | CL55A686MQJN [□] | |
| | | 100uF | ±20% | CL55A107MQJN [□] | |
| | | 10Vdc | 47uF | ±10% | CL55A476KPJN [□] |

※ □ mark means packaging code. If you want to learn the code or quantity in detail, please see p.148

Product Line Up (X6S)

■ Size : 1.00 X 0.50mm (inch : 0402)

| Thickness Max. | Rated Voltage | Capacitance | Capacitance Tolerance | Part Number | Remark |
|----------------|---------------|-------------|-----------------------|------------------|------------------|
| 0.33mm | 6.3Vdc | 1.0uF | ±20% | CL05X105MQ3LNN □ | Derating |
| 0.55mm | 4.0Vdc | 2.2nF | ±20% | CL05X222MR5NNN □ | |
| | | 15nF | ±20% | CL05X153MR5NNN □ | |
| | | 47nF | ±20% | CL05X473MR5NNN □ | |
| | | 220nF | ±20% | CL05X224MR5NNN □ | |
| | | 2.2uF | ±20% | CL05X225MR5NNN □ | Derating |
| | 6.3Vdc | 680nF | ±5% | CL05X684JQ5NNN □ | |
| | | | 1.0uF | ±10% | CL05X105KQ5NNN □ |
| | 10Vdc | 1.0uF | ±10% | CL05X105KP5NNN □ | Derating |
| 0.57mm | 2.5Vdc | 2.2uF | ±20% | CL05X225MS5NSN □ | Derating Ref. |
| 0.60mm | 25Vdc | 1.0uF | ±10% | CL05X105KA5NQN □ | Derating |
| 0.70mm | 4.0Vdc | 4.7uF | ±20% | CL05X475MR5NUN □ | Derating Ref. |
| | | 10uF | ±20% | CL05X106MR5NUN □ | Derating Ref. |

■ Size : 1.60 X 0.80mm (inch : 0603)

| Thickness Max. | Rated Voltage | Capacitance | Capacitance Tolerance | Part Number | Remark |
|----------------|---------------|-------------|-----------------------|------------------|---------------|
| 0.90mm | 4.0Vdc | 1.0uF | ±20% | CL10X105MR8NNN □ | |
| | | 4.7uF | ±20% | CL10X475MR8NNN □ | Derating |
| | | 10uF | ±10% | CL10X106KR8NNN □ | Derating Ref. |
| | | 10uF | ±20% | CL10X106MR8NNN □ | Derating Ref. |
| | 6.3Vdc | 1.0uF | ±20% | CL10X105MQ8NNN □ | |
| | | 2.2uF | ±10% | CL10X225KQ8NNN □ | |
| | | 2.2uF | ±20% | CL10X225MQ8NNN □ | |
| | | 4.7uF | ±10% | CL10X475KQ8NNN □ | Derating |
| | | 4.7uF | ±20% | CL10X475MQ8NNN □ | Derating |
| | | 10uF | ±10% | CL10X106KQ8NNN □ | Derating Ref. |
| | | 10uF | ±20% | CL10X106MQ8NNN □ | Derating Ref. |
| 10Vdc | 2.2uF | ±10% | CL10X225KP8NNN □ | | |
| 25Vdc | 1.0uF | ±10% | CL10X105KA8NNN □ | | |
| 0.95mm | 25Vdc | 4.7uF | ±10% | CL10X475KA8NQN □ | Derating |
| 1.00mm | 10Vdc | 10uF | ±20% | CL10X106MP8NRN □ | Derating Ref. |
| | 16Vdc | 4.7uF | ±10% | CL10X475KO8NRN □ | Derating |
| | | 10uF | ±20% | CL10X106MO8NRN □ | Derating Ref. |

■ Size : 2.00 X 1.25mm (inch : 0805)

| Thickness Max. | Rated Voltage | Capacitance | Capacitance Tolerance | Part Number | Remark |
|----------------|---------------|-------------|-----------------------|------------------|------------------|
| 0.95mm | 2.5Vdc | 22uF | ±20% | CL21X226MSCLRN □ | Derating |
| | 4.0Vdc | 10uF | ±10% | CL21X106KRCLRN □ | Derating |
| | 10Vdc | 10uF | ±10% | CL21X106KPCLRN □ | Derating |
| 1.35mm | 4.0Vdc | 4.7uF | ±10% | CL21X475KRFNNN □ | |
| | | 10uF | ±10% | CL21X106KRFNNN □ | |
| | | 10uF | ±20% | CL21X106MRFNNN □ | |
| | 16Vdc | 2.2uF | ±10% | CL21X225KOFNNN □ | |
| 1.40mm | 4.0Vdc | 22uF | ±20% | CL21X226MRQNNN □ | Derating |
| | 6.3Vdc | 10uF | ±10% | CL21X106KQNNN □ | Derating |
| | | 22uF | ±20% | CL21X226MQNNN □ | Derating |
| | 16Vdc | 10uF | ±10% | CL21X106KOQNNN □ | |
| | | 10uF | ±20% | CL21X106MOQNNN □ | |
| | | 4.7uF | ±10% | CL21X475KAQNNN □ | Derating |
| | | | 4.7uF | ±20% | CL21X475MAQNNN □ |
| 1.45mm | 2.5Vdc | 47uF | ±20% | CL21X476MSYNNN □ | Derating |
| | 4.0Vdc | 47uF | ±20% | CL21X476MRYNNN □ | Derating |
| | 10Vdc | 10uF | ±10% | CL21X106KPYNNN □ | |
| | 25Vdc | 10uF | ±10% | CL21X106KAYNNN □ | Derating |
| | | 10uF | ±20% | CL21X106MAYNNN □ | Derating |

■ Size : 3.20 X 1.60mm (inch : 1206)

| Thickness Max. | Rated Voltage | Capacitance | Capacitance Tolerance | Part Number | Remark |
|----------------|---------------|-------------|-----------------------|------------------|----------|
| 0.95mm | 25Vdc | 4.7uF | ±10% | CL31X475KACLNN □ | |
| 1.80mm | 4.0Vdc | 10uF | ±10% | CL31X106KRHNNN □ | |
| | | 10uF | ±20% | CL31X106MRHNNN □ | |
| | | 22uF | ±10% | CL31X226KRHNNN □ | |
| | | 22uF | ±20% | CL31X226MRHNNN □ | |
| | | 47uF | ±20% | CL31X476MRHNNN □ | Derating |
| | 6.3Vdc | 10uF | ±10% | CL31X106QHNNN □ | |
| | | 10uF | ±20% | CL31X106MQHNNN □ | |
| | | 22uF | ±10% | CL31X226QHNNN □ | |
| | | 47uF | ±10% | CL31X476QHNNN □ | Derating |
| | | 47uF | ±20% | CL31X476MQHNNN □ | Derating |
| 16Vdc | 22uF | ±10% | CL31X226KOHNNN □ | Derating | |
| 25Vdc | 10uF | ±10% | CL31X106KAHNNN □ | | |

■ Size : 3.20 X 2.50mm (inch : 1210)

| Thickness Max. | Rated Voltage | Capacitance | Capacitance Tolerance | Part Number | Remark |
|----------------|---------------|-------------|-----------------------|------------------|--------|
| 2.70mm | 6.3Vdc | 22uF | ±20% | CL32X226MJNNN □ | |
| | 10Vdc | 47uF | ±10% | CL32X476KPNJNN □ | |
| | 16Vdc | 10uF | ±10% | CL32X106KQJNNN □ | |
| 2.80mm | 4.0Vdc | 100uF | ±10% | CL32X107KRVNNN □ | |
| | 6.3Vdc | 100uF | ±20% | CL32X107MQVNNN □ | |

※ □ mark means packaging code. If you want to learn the code or quantity in detail, please see p.148

Standard & High Capacitors

Product Line Up (X7R)

■ Size : 1.00 X 0.50mm (inch : 0402)

| Thickness Max. | Rated Voltage | Capacitance | Capacitance Tolerance | Part Number | Remark | Thickness Max. | Rated Voltage | Capacitance | Capacitance Tolerance | Part Number | Remark | |
|----------------|---------------|-----------------|-----------------------|-----------------|--------|----------------|-----------------|-----------------|-----------------------|-----------------|-----------------|--|
| 0.33mm | 16Vdc | 100nF | ±10% | CL05B104K03LNN□ | | 0.55mm | 16Vdc | 47nF | ±20% | CL05B473M05NNN□ | | |
| 0.55mm | 6.3Vdc | 68nF | ±10% | CL05B683K05NNN□ | | | | 56nF | ±10% | CL05B563K05NNN□ | | |
| | | 100nF | ±10% | CL05B104K05NNN□ | | | | 68nF | ±10% | CL05B683K05NNN□ | | |
| | | 470nF | ±10% | CL05B474K05NNN□ | Ref. | | | 82nF | ±10% | CL05B823K05NNN□ | | |
| | 10Vdc | 1.0nF | ±10% | CL05B102KP5NNN□ | | | | 100nF | ±5% | CL05B104J05NNN□ | | |
| | | 2.2nF | ±20% | CL05B222MP5NNN□ | | | | 100nF | ±10% | CL05B104K05NNN□ | | |
| | | 6.8nF | ±20% | CL05B682MP5NNN□ | | | | 100nF | ±20% | CL05B104M05NNN□ | | |
| | | 10nF | ±10% | CL05B103KP5NNN□ | | | | 150nF | ±10% | CL05B154K05NNN□ | | |
| | | 15nF | ±20% | CL05B153MP5NNN□ | | | | 220nF | ±10% | CL05B224K05NNN□ | Ref. | |
| | | 18nF | ±10% | CL05B183KP5NNN□ | | | | 25Vdc | 220pF | ±10% | CL05B221K05NNN□ | |
| | | 22nF | ±10% | CL05B223KP5NNN□ | | | | | 270pF | ±10% | CL05B271K05NNN□ | |
| | | 27nF | ±10% | CL05B273KP5NNN□ | | | | | 330pF | ±10% | CL05B331K05NNN□ | |
| 33nF | | ±10% | CL05B333KP5NNN□ | | 470pF | | | | ±10% | CL05B471K05NNN□ | | |
| 47nF | | ±10% | CL05B473KP5NNN□ | | 560pF | | | | ±10% | CL05B561K05NNN□ | | |
| 47nF | | ±20% | CL05B473MP5NNN□ | | 1.0nF | | | | ±10% | CL05B102K05NNN□ | | |
| 56nF | | ±10% | CL05B563KP5NNN□ | | 1.5nF | | | | ±10% | CL05B152K05NNN□ | | |
| 68nF | | ±10% | CL05B683KP5NNN□ | | 1.8nF | | | | ±10% | CL05B182K05NNN□ | | |
| 82nF | | ±10% | CL05B823KP5NNN□ | | 2.2nF | | | | ±10% | CL05B222K05NNN□ | | |
| 100nF | ±5% | CL05B104JP5NNN□ | | 2.2nF | ±20% | | CL05B222MA5NNN□ | | | | | |
| 100nF | ±10% | CL05B104KP5NNN□ | | 3.3nF | ±5% | | CL05B332JA5NNN□ | | | | | |
| 100nF | ±20% | CL05B104MP5NNN□ | | 3.3nF | ±10% | | CL05B332K05NNN□ | | | | | |
| 220nF | ±10% | CL05B224KP5NNN□ | Ref. | 3.9nF | ±10% | | CL05B392K05NNN□ | | | | | |
| 470nF | ±10% | CL05B474KP5NNN□ | | 4.7nF | ±5% | | CL05B472JA5NNN□ | | | | | |
| 16Vdc | 220pF | ±10% | CL05B221K05NNN□ | | 4.7nF | | ±10% | | CL05B472K05NNN□ | | | |
| | 330pF | ±10% | CL05B331K05NNN□ | | 5.6nF | | ±10% | | CL05B562K05NNN□ | | | |
| | 820pF | ±10% | CL05B821K05NNN□ | | 6.8nF | | ±10% | | CL05B682K05NNN□ | | | |
| | 1.0nF | ±10% | CL05B102K05NNN□ | | 8.2nF | | ±10% | | CL05B822K05NNN□ | | | |
| | 2.2nF | ±10% | CL05B222K05NNN□ | | 10nF | | ±5% | CL05B103JA5NNN□ | | | | |
| | 2.7nF | ±10% | CL05B272K05NNN□ | | 10nF | | ±10% | CL05B103K05NNN□ | | | | |
| | 3.9nF | ±10% | CL05B392K05NNN□ | | 10nF | | ±20% | CL05B103MA5NNN□ | | | | |
| | 4.7nF | ±10% | CL05B472K05NNN□ | | 12nF | | ±10% | CL05B123K05NNN□ | | | | |
| | 4.7nF | ±20% | CL05B472M05NNN□ | | 15nF | | ±5% | CL05B153J05NNN□ | | | | |
| | 5.6nF | ±10% | CL05B562K05NNN□ | | 15nF | | ±10% | CL05B153K05NNN□ | | | | |
| | 6.8nF | ±10% | CL05B682K05NNN□ | | 18nF | | ±5% | CL05B183J05NNN□ | | | | |
| | 8.2nF | ±10% | CL05B822K05NNN□ | | 18nF | | ±10% | CL05B183K05NNN□ | | | | |
| | 10nF | ±5% | CL05B103J05NNN□ | | 22nF | | ±5% | CL05B223J05NNN□ | | | | |
| | 10nF | ±10% | CL05B103K05NNN□ | | 22nF | | ±10% | CL05B223K05NNN□ | | | | |
| | 10nF | ±20% | CL05B103MA5NNN□ | | 22nF | | ±20% | CL05B223M05NNN□ | | | | |
| | 12nF | ±10% | CL05B123K05NNN□ | | 27nF | | ±5% | CL05B273J05NNN□ | | | | |
| | 15nF | ±5% | CL05B153J05NNN□ | | 27nF | | ±10% | CL05B273K05NNN□ | | | | |
| | 15nF | ±10% | CL05B153K05NNN□ | | 33nF | | ±5% | CL05B333J05NNN□ | | | | |
| | 18nF | ±5% | CL05B183J05NNN□ | | 33nF | | ±10% | CL05B333K05NNN□ | | | | |
| | 18nF | ±10% | CL05B183K05NNN□ | | 33nF | | ±20% | CL05B333M05NNN□ | | | | |
| | 22nF | ±5% | CL05B223J05NNN□ | | 39nF | | ±10% | CL05B393K05NNN□ | | | | |
| | 22nF | ±10% | CL05B223K05NNN□ | | 47nF | | ±5% | CL05B473J05NNN□ | | | | |
| | 22nF | ±20% | CL05B223M05NNN□ | | 47nF | | ±10% | CL05B473K05NNN□ | | | | |
| 27nF | ±5% | CL05B273J05NNN□ | | | | | | | | | | |
| 27nF | ±10% | CL05B273K05NNN□ | | | | | | | | | | |
| 33nF | ±5% | CL05B333J05NNN□ | | | | | | | | | | |
| 33nF | ±10% | CL05B333K05NNN□ | | | | | | | | | | |
| 33nF | ±20% | CL05B333M05NNN□ | | | | | | | | | | |
| 39nF | ±10% | CL05B393K05NNN□ | | | | | | | | | | |
| 47nF | ±5% | CL05B473J05NNN□ | | | | | | | | | | |
| 47nF | ±10% | CL05B473K05NNN□ | | | | | | | | | | |
| | | | | | | 50Vdc | 12pF | ±5% | CL05B120JB5NNN□ | | | |
| | | | | | | | 47pF | ±5% | CL05B470JB5NNN□ | | | |
| | | | | | | | 100pF | ±10% | CL05B101KB5NNN□ | | | |
| | | | | | | | 120pF | ±10% | CL05B121KB5NNN□ | | | |
| | | | | | | | 150pF | ±10% | CL05B151KB5NNN□ | | | |
| | | | | | | | 180pF | ±10% | CL05B181KB5NNN□ | | | |
| | | | | | | | 200pF | ±10% | CL05B201KB5NNN□ | | | |
| | | | | | | | 220pF | ±5% | CL05B221JB5NNN□ | | | |
| | | | | | | | 220pF | ±10% | CL05B221KB5NNN□ | | | |
| | | | | | | | 240pF | ±10% | CL05B241KB5NNN□ | | | |
| | | | | | | | 270pF | ±5% | CL05B271JB5NNN□ | | | |
| | | | | | | | 270pF | ±10% | CL05B271KB5NNN□ | | | |
| | | | | | | | 300pF | ±10% | CL05B301KB5NNN□ | | | |
| | | | | | | | 320pF | ±10% | CL05B321KB5NNN□ | | | |
| | | | | | | | 330pF | ±5% | CL05B331JB5NNN□ | | | |
| | | | | | | | 330pF | ±10% | CL05B331KB5NNN□ | | | |
| | | | | | | | 360pF | ±10% | CL05B361KB5NNN□ | | | |

* □ mark means packaging code. If you want to learn the code or quantity in detail, please see p.148

Product Line Up (X7R)

■ Size : 1.00 X 0.50mm (inch : 0402)

| Thickness Max. | Rated Voltage | Capacitance | Capacitance Tolerance | Part Number | Remark | Thickness Max. | Rated Voltage | Capacitance | Capacitance Tolerance | Part Number | Remark | |
|----------------|---------------|-----------------|-----------------------|-----------------|--------|-----------------|-----------------|-------------|-----------------------|-----------------|-----------------|--|
| 0.55mm | 50Vdc | 390pF | ±5% | CL05B391JB5NNN□ | | 0.90mm | 10Vdc | 100nF | ±10% | CL10B104KP8NNN□ | | |
| | | 390pF | ±10% | CL05B391KB5NNN□ | | | | 150nF | ±10% | CL10B154KP8NNN□ | | |
| | | 470pF | ±5% | CL05B471JB5NNN□ | | | | 220nF | ±5% | CL10B224JP8NNN□ | | |
| | | 470pF | ±10% | CL05B471KB5NNN□ | | | | 220nF | ±10% | CL10B224KP8NNN□ | | |
| | | 510pF | ±10% | CL05B511KB5NNN□ | | | | 330nF | ±10% | CL10B334KP8NNN□ | | |
| | | 560pF | ±5% | CL05B561JB5NNN□ | | | | 470nF | ±10% | CL10B474KP8NNN□ | | |
| | | 560pF | ±10% | CL05B561KB5NNN□ | | | | 1.0uF | ±10% | CL10B105KP8NNN□ | | |
| | | 620pF | ±10% | CL05B621KB5NNN□ | | | | 2.2uF | ±10% | CL10B225KP8NNN□ | Ref. | |
| | | 680pF | ±5% | CL05B681JB5NNN□ | | | | 16Vdc | 470pF | ±10% | CL10B471KO8NNN□ | |
| | | 680pF | ±10% | CL05B681KB5NNN□ | | | | | 820pF | ±10% | CL10B821KO8NNN□ | |
| | | 750pF | ±10% | CL05B751KB5NNN□ | | | | | 1.0nF | ±10% | CL10B102KO8NNN□ | |
| | | 820pF | ±10% | CL05B821KB5NNN□ | | | | | 2.2nF | ±10% | CL10B222KO8NNN□ | |
| | | 1.0nF | ±5% | CL05B102JB5NNN□ | | | 3.3nF | | ±10% | CL10B332KO8NNN□ | | |
| | | 1.0nF | ±10% | CL05B102KB5NNN□ | | | 3.9nF | | ±10% | CL10B392KO8NNN□ | | |
| | | 1.2nF | ±5% | CL05B122JB5NNN□ | | | 10nF | | ±10% | CL10B103KO8NNN□ | | |
| | | 1.2nF | ±10% | CL05B122KB5NNN□ | | | 15nF | | ±10% | CL10B153KO8NNN□ | | |
| | | 1.5nF | ±5% | CL05B152JB5NNN□ | | | 16nF | | ±10% | CL10B163KO8NNN□ | | |
| | | 1.5nF | ±10% | CL05B152KB5NNN□ | | | 18nF | | ±10% | CL10B183KO8NNN□ | | |
| | | 1.8nF | ±10% | CL05B182KB5NNN□ | | | 22nF | | ±10% | CL10B223KO8NNN□ | | |
| | | 2.0nF | ±10% | CL05B202KB5NNN□ | | | 27nF | | ±10% | CL10B273KO8NNN□ | | |
| | | 2.2nF | ±5% | CL05B222JB5NNN□ | | | 33nF | | ±10% | CL10B333KO8NNN□ | | |
| | | 2.2nF | ±10% | CL05B222KB5NNN□ | | | 39nF | | ±10% | CL10B393KO8NNN□ | | |
| | | 2.2nF | ±20% | CL05B222MB5NNN□ | | | 47nF | | ±10% | CL10B473KO8NNN□ | | |
| | | 2.4nF | ±10% | CL05B242KB5NNN□ | | | 56nF | | ±10% | CL10B563KO8NNN□ | | |
| | | 2.7nF | ±10% | CL05B272KB5NNN□ | | | 68nF | | ±10% | CL10B683KO8NNN□ | | |
| | | 3.0nF | ±10% | CL05B302KB5NNN□ | | | 68nF | | ±20% | CL10B683MO8NNN□ | | |
| | | 3.3nF | ±5% | CL05B332JB5NNN□ | | | 75nF | | ±10% | CL10B753KO8NNN□ | | |
| | | 3.3nF | ±10% | CL05B332KB5NNN□ | | | 82nF | | ±10% | CL10B823KO8NNN□ | | |
| | | 3.9nF | ±5% | CL05B392JB5NNN□ | | | 100nF | | ±5% | CL10B104JO8NNN□ | | |
| | | 3.9nF | ±10% | CL05B392KB5NNN□ | | | 100nF | ±10% | CL10B104KO8NNN□ | | | |
| | | 4.7nF | ±5% | CL05B472JB5NNN□ | | | 100nF | ±20% | CL10B104MO8NNN□ | | | |
| | | 4.7nF | ±10% | CL05B472KB5NNN□ | | | 120nF | ±10% | CL10B124KO8NNN□ | | | |
| | | 4.7nF | ±20% | CL05B472MB5NNN□ | | | 150nF | ±10% | CL10B154KO8NNN□ | | | |
| 5.6nF | ±10% | CL05B562KB5NNN□ | | 180nF | ±10% | CL10B184KO8NNN□ | | | | | | |
| 6.8nF | ±5% | CL05B682JB5NNN□ | | 220nF | ±5% | CL10B224JO8NNN□ | | | | | | |
| 6.8nF | ±10% | CL05B682KB5NNN□ | | 220nF | ±10% | CL10B224KO8NNN□ | | | | | | |
| 8.2nF | ±10% | CL05B822KB5NNN□ | | 220nF | ±20% | CL10B224MO8NNN□ | | | | | | |
| 10nF | ±5% | CL05B103JB5NNN□ | | 330nF | ±10% | CL10B334KO8NNN□ | | | | | | |
| 10nF | ±10% | CL05B103KB5NNN□ | | 470nF | ±10% | CL10B474KO8NNN□ | | | | | | |
| 10nF | ±20% | CL05B103MB5NNN□ | | 470nF | ±20% | CL10B474MO8NNN□ | | | | | | |
| 15nF | ±10% | CL05B153KB5NNN□ | | 680nF | ±10% | CL10B684KO8NNN□ | | | | | | |
| 22nF | ±10% | CL05B223KB5NNN□ | | 1.0uF | ±10% | CL10B105KO8NNN□ | | | | | | |
| | | | | 25Vdc | 220pF | ±10% | CL10B221KA8NNN□ | | | | | |
| | | | | | 390pF | ±10% | CL10B391KA8NNN□ | | | | | |
| | | | | | 470pF | ±10% | CL10B471KA8NNN□ | | | | | |
| | | | | | 1.0nF | ±5% | CL10B102JA8NNN□ | | | | | |
| | | | | | 1.0nF | ±10% | CL10B102KA8NNN□ | | | | | |
| | | | | | 2.2nF | ±10% | CL10B222KA8NNN□ | | | | | |
| | | | | | 4.7nF | ±10% | CL10B472KA8NNN□ | | | | | |
| | | | | | 5.6nF | ±10% | CL10B562KA8NNN□ | | | | | |
| | | | | | 6.8nF | ±10% | CL10B682KA8NNN□ | | | | | |
| | | | | | 8.2nF | ±10% | CL10B822KA8NNN□ | | | | | |
| | | | | | 10nF | ±10% | CL10B103KA8NNN□ | | | | | |
| | | | | | 12nF | ±10% | CL10B123KA8NNN□ | | | | | |

■ Size : 1.60 X 0.80mm (inch : 0603)

| Thickness Max. | Rated Voltage | Capacitance | Capacitance Tolerance | Part Number | Remark |
|----------------|---------------|-------------|-----------------------|-----------------|--------|
| 0.90mm | 6.3Vdc | 4.7nF | ±10% | CL10B472KQ8NNN□ | |
| | | 470nF | ±10% | CL10B474KQ8NNN□ | |
| | | 680nF | ±10% | CL10B684KQ8NNN□ | |
| | | 820nF | ±10% | CL10B824KQ8NNN□ | |
| | | 1.0uF | ±10% | CL10B105KQ8NNN□ | |
| | | 1.0uF | ±20% | CL10B105MQ8NNN□ | |
| | | 2.2uF | ±10% | CL10B225KQ8NNN□ | |

※ □ mark means packaging code. If you want to learn the code or quantity in detail, please see p.148

Standard & High Capacitors

Product Line Up (X7R)

■ Size : 1.60 X 0.80mm (inch : 0603)

| Thickness Max. | Rated Voltage | Capacitance | Capacitance Tolerance | Part Number | Remark | Thickness Max. | Rated Voltage | Capacitance | Capacitance Tolerance | Part Number | Remark |
|----------------|---------------|-----------------|-----------------------|-----------------|--------|-----------------|---------------|-----------------|-----------------------|-----------------|--------|
| 0.90mm | 25Vdc | 15nF | ±5% | CL10B153JA8NNN□ | | 0.90mm | 50Vdc | 1.4nF | ±5% | CL10B142JB8NNN□ | |
| | | 15nF | ±10% | CL10B153KA8NNN□ | | | | 1.5nF | ±5% | CL10B152JB8NNN□ | |
| | | 18nF | ±10% | CL10B183KA8NNN□ | | | | 1.5nF | ±10% | CL10B152KB8NNN□ | |
| | | 18nF | ±20% | CL10B183MA8NNN□ | | | | 1.8nF | ±5% | CL10B182JB8NNN□ | |
| | | 22nF | ±5% | CL10B223JA8NNN□ | | | | 1.8nF | ±10% | CL10B182KB8NNN□ | |
| | | 22nF | ±10% | CL10B223KA8NNN□ | | | | 2.0nF | ±10% | CL10B202KB8NNN□ | |
| | | 27nF | ±10% | CL10B273KA8NNN□ | | | | 2.2nF | ±5% | CL10B222JB8NNN□ | |
| | | 33nF | ±5% | CL10B333JA8NNN□ | | | | 2.2nF | ±10% | CL10B222KB8NNN□ | |
| | | 33nF | ±10% | CL10B333KA8NNN□ | | | | 2.2nF | ±20% | CL10B222MB8NNN□ | |
| | | 39nF | ±10% | CL10B393KA8NNN□ | | | | 2.4nF | ±10% | CL10B242KB8NNN□ | |
| | | 47nF | ±10% | CL10B473KA8NNN□ | | | | 2.7nF | ±5% | CL10B272JB8NNN□ | |
| | | 56nF | ±5% | CL10B563JA8NNN□ | | | | 2.7nF | ±10% | CL10B272KB8NNN□ | |
| | | 56nF | ±10% | CL10B563KA8NNN□ | | | | 2.9nF | ±10% | CL10B292KB8NNN□ | |
| | | 68nF | ±10% | CL10B683KA8NNN□ | | | | 3.0nF | ±10% | CL10B302KB8NNN□ | |
| | | 82nF | ±10% | CL10B823KA8NNN□ | | | | 3.0nF | ±20% | CL10B302MB8NNN□ | |
| | | 100nF | ±5% | CL10B104JA8NNN□ | | | | 3.3nF | ±5% | CL10B332JB8NNN□ | |
| | | 100nF | ±10% | CL10B104KA8NNN□ | | | | 3.3nF | ±10% | CL10B332KB8NNN□ | |
| | | 100nF | ±20% | CL10B104MA8NNN□ | | | | 3.3nF | ±20% | CL10B332MB8NNN□ | |
| | | 150nF | ±10% | CL10B154KA8NNN□ | | | | 3.6nF | ±5% | CL10B362JB8NNN□ | |
| | | 220nF | ±10% | CL10B224KA8NNN□ | | | | 3.6nF | ±10% | CL10B362KB8NNN□ | |
| 470nF | ±10% | CL10B474KA8NNN□ | | 3.9nF | ±10% | CL10B392KB8NNN□ | | | | | |
| 1.0uF | ±10% | CL10B105KA8NNN□ | | 4.7nF | ±5% | CL10B472JB8NNN□ | | | | | |
| 50Vdc | 50Vdc | 100pF | ±10% | CL10B101KB8NNN□ | | 4.7nF | ±10% | CL10B472KB8NNN□ | | | |
| | | 120pF | ±10% | CL10B121KB8NNN□ | | 4.7nF | ±20% | CL10B472MB8NNN□ | | | |
| | | 150pF | ±10% | CL10B151KB8NNN□ | | 5.1nF | ±10% | CL10B512KB8NNN□ | | | |
| | | 180pF | ±10% | CL10B181KB8NNN□ | | 5.6nF | ±5% | CL10B562JB8NNN□ | | | |
| | | 200pF | ±10% | CL10B201KB8NNN□ | | 5.6nF | ±10% | CL10B562KB8NNN□ | | | |
| | | 220pF | ±5% | CL10B221JB8NNN□ | | 5.6nF | ±20% | CL10B562MB8NNN□ | | | |
| | | 220pF | ±10% | CL10B221KB8NNN□ | | 6.2nF | ±5% | CL10B622JB8NNN□ | | | |
| | | 270pF | ±5% | CL10B271JB8NNN□ | | 6.2nF | ±10% | CL10B622KB8NNN□ | | | |
| | | 270pF | ±10% | CL10B271KB8NNN□ | | 6.8nF | ±5% | CL10B682JB8NNN□ | | | |
| | | 300pF | ±10% | CL10B301KB8NNN□ | | 6.8nF | ±10% | CL10B682KB8NNN□ | | | |
| | | 330pF | ±5% | CL10B331JB8NNN□ | | 6.8nF | ±20% | CL10B682MB8NNN□ | | | |
| | | 330pF | ±10% | CL10B331KB8NNN□ | | 7.5nF | ±5% | CL10B752JB8NNN□ | | | |
| | | 360pF | ±10% | CL10B361KB8NNN□ | | 8.2nF | ±5% | CL10B822JB8NNN□ | | | |
| | | 390pF | ±10% | CL10B391KB8NNN□ | | 8.2nF | ±10% | CL10B822KB8NNN□ | | | |
| | | 430pF | ±10% | CL10B431KB8NNN□ | | 9.1nF | ±5% | CL10B912JB8NNN□ | | | |
| | | 470pF | ±5% | CL10B471JB8NNN□ | | 10nF | ±5% | CL10B103JB8NNN□ | | | |
| | | 470pF | ±10% | CL10B471KB8NNN□ | | 10nF | ±10% | CL10B103KB8NNN□ | | | |
| | | 500pF | ±10% | CL10B501KB8NNN□ | | 10nF | ±20% | CL10B103MB8NNN□ | | | |
| | | 510pF | ±10% | CL10B511KB8NNN□ | | 12nF | ±5% | CL10B123JB8NNN□ | | | |
| | | 560pF | ±5% | CL10B561JB8NNN□ | | 12nF | ±10% | CL10B123KB8NNN□ | | | |
| | | 560pF | ±10% | CL10B561KB8NNN□ | | 15nF | ±5% | CL10B153JB8NNN□ | | | |
| | | 620pF | ±5% | CL10B621JB8NNN□ | | 15nF | ±10% | CL10B153KB8NNN□ | | | |
| | | 680pF | ±5% | CL10B681JB8NNN□ | | 15nF | ±20% | CL10B153MB8NNN□ | | | |
| | | 680pF | ±10% | CL10B681KB8NNN□ | | 18nF | ±5% | CL10B183JB8NNN□ | | | |
| | | 750pF | ±10% | CL10B751KB8NNN□ | | 18nF | ±10% | CL10B183KB8NNN□ | | | |
| | | 820pF | ±5% | CL10B821JB8NNN□ | | 20nF | ±10% | CL10B203KB8NNN□ | | | |
| | | 820pF | ±10% | CL10B821KB8NNN□ | | 22nF | ±5% | CL10B223JB8NNN□ | | | |
| | | 910pF | ±5% | CL10B911JB8NNN□ | | 22nF | ±10% | CL10B223KB8NNN□ | | | |
| | | 1.0nF | ±10% | CL10B102KB8NNN□ | | 22nF | ±20% | CL10B223MB8NNN□ | | | |
| | | 1.0nF | ±20% | CL10B102MB8NNN□ | | 27nF | ±10% | CL10B273KB8NNN□ | | | |
| | | 1.2nF | ±5% | CL10B122JB8NNN□ | | 33nF | ±5% | CL10B333JB8NNN□ | | | |
| | | 1.2nF | ±10% | CL10B122KB8NNN□ | | 33nF | ±10% | CL10B333KB8NNN□ | | | |

* □ mark means packaging code. If you want to learn the code or quantity in detail, please see p.148

Product Line Up (X7R)

■ Size : 1.60 X 0.80mm (inch : 0603)

| Thickness Max. | Rated Voltage | Capacitance | Capacitance Tolerance | Part Number | Remark | Thickness Max. | Rated Voltage | Capacitance | Capacitance Tolerance | Part Number | Remark |
|----------------|---------------|-----------------|-----------------------|-----------------|--------|-----------------|---------------|-------------|-----------------------|-----------------|--------|
| 0.90mm | 50Vdc | 39nF | ±5% | CL10B393JB8NNN□ | | 0.75mm | 25Vdc | 68nF | ±10% | CL21B683KAANNN□ | |
| | | 39nF | ±10% | CL10B393KB8NNN□ | | | 50Vdc | 18pF | ±5% | CL21B180JBANNN□ | |
| | | 47nF | ±5% | CL10B473JB8NNN□ | | | 22pF | ±5% | CL21B220JBANNN□ | | |
| | | 47nF | ±10% | CL10B473KB8NNN□ | | | 56pF | ±5% | CL21B560JBANNN□ | | |
| | | 47nF | ±20% | CL10B473MB8NNN□ | | | 100pF | ±5% | CL21B101JBANNN□ | | |
| | | 56nF | ±5% | CL10B563JB8NNN□ | | | 100pF | ±10% | CL21B101KBANNN□ | | |
| | | 56nF | ±10% | CL10B563KB8NNN□ | | | 150pF | ±10% | CL21B151KBANNN□ | | |
| | | 68nF | ±5% | CL10B683JB8NNN□ | | | 180pF | ±10% | CL21B181KBANNN□ | | |
| | | 68nF | ±10% | CL10B683KB8NNN□ | | | 200pF | ±10% | CL21B201KBANNN□ | | |
| | | 82nF | ±5% | CL10B823JB8NNN□ | | | 220pF | ±5% | CL21B221JBANNN□ | | |
| | | 82nF | ±10% | CL10B823KB8NNN□ | | | 220pF | ±10% | CL21B221KBANNN□ | | |
| | | 100nF | ±5% | CL10B104JB8NNN□ | | | 270pF | ±10% | CL21B271KBANNN□ | | |
| | | 100nF | ±10% | CL10B104KB8NNN□ | | | 300pF | ±10% | CL21B301KBANNN□ | | |
| | | 100nF | ±20% | CL10B104MB8NNN□ | | | 330pF | ±5% | CL21B331JBANNN□ | | |
| | | 220nF | ±10% | CL10B224KB8NNN□ | | | 330pF | ±10% | CL21B331KBANNN□ | | |
| 330nF | ±10% | CL10B334KB8NNN□ | | 360pF | ±10% | CL21B361KBANNN□ | | | | | |

■ Size : 2.00 X 1.25mm (inch : 0805)

| Thickness Max. | Rated Voltage | Capacitance | Capacitance Tolerance | Part Number | Remark | Thickness Max. | Rated Voltage | Capacitance | Capacitance Tolerance | Part Number | Remark | |
|----------------|---------------|-------------|-----------------------|-----------------|-----------------|-----------------|---------------|-------------|-----------------------|-----------------|-----------------|--|
| 0.75mm | 16Vdc | 15nF | ±10% | CL21B153KOANNN□ | | 0.75mm | 25Vdc | 390pF | ±5% | CL21B391JBANNN□ | | |
| | | 22nF | ±10% | CL21B223KOANNN□ | | | | 390pF | ±10% | CL21B391KBANNN□ | | |
| | | 33nF | ±10% | CL21B333KOANNN□ | | | | 470pF | ±5% | CL21B471JBANNN□ | | |
| | | 39nF | ±10% | CL21B393KOANNN□ | | | | 470pF | ±10% | CL21B471KBANNN□ | | |
| | | 47nF | ±10% | CL21B473KOANNN□ | | | | 500pF | ±10% | CL21B501KBANNN□ | | |
| | | 56nF | ±10% | CL21B563KOANNN□ | | | | 510pF | ±10% | CL21B511KBANNN□ | | |
| | | 68nF | ±10% | CL21B683KOANNN□ | | | | 560pF | ±5% | CL21B561JBANNN□ | | |
| | | 100nF | ±5% | CL21B104JOANNN□ | | | | 560pF | ±10% | CL21B561KBANNN□ | | |
| | | 100nF | ±10% | CL21B104KOANNN□ | | | | 620pF | ±10% | CL21B621KBANNN□ | | |
| | | 100nF | ±20% | CL21B104MOANNN□ | | | | 680pF | ±5% | CL21B681JBANNN□ | | |
| | | 120nF | ±5% | CL21B124JOANNN□ | | | | 680pF | ±10% | CL21B681KBANNN□ | | |
| | | 150nF | ±10% | CL21B154KOANNN□ | | | | 750pF | ±10% | CL21B751KBANNN□ | | |
| | | 180nF | ±10% | CL21B184KOANNN□ | | | | 820pF | ±10% | CL21B821KBANNN□ | | |
| | | 25Vdc | 220pF | ±20% | CL21B221MAANNN□ | | | | 910pF | ±10% | CL21B911KBANNN□ | |
| | | | 1.0nF | ±10% | CL21B102KAANNN□ | | | | 1.0nF | ±5% | CL21B102JBANNN□ | |
| | 1.0nF | | ±20% | CL21B102MAANNN□ | | | | 1.0nF | ±10% | CL21B102KBANNN□ | | |
| | 2.2nF | | ±10% | CL21B222KAANNN□ | | | | 1.0nF | ±20% | CL21B102MBANNN□ | | |
| | 2.2nF | | ±20% | CL21B222MAANNN□ | | | | 1.2nF | ±10% | CL21B122KBANNN□ | | |
| | 4.7nF | | ±10% | CL21B472KAANNN□ | | | | 1.3nF | ±5% | CL21B132JBANNN□ | | |
| | 5.6nF | | ±10% | CL21B562KAANNN□ | | | | 1.5nF | ±5% | CL21B152JBANNN□ | | |
| | 6.8nF | | ±10% | CL21B682KAANNN□ | | | | 1.5nF | ±10% | CL21B152KBANNN□ | | |
| | 6.8nF | | ±20% | CL21B682MAANNN□ | | | | 1.8nF | ±5% | CL21B182JBANNN□ | | |
| | 10nF | | ±10% | CL21B103KAANNN□ | | | | 1.8nF | ±10% | CL21B182KBANNN□ | | |
| | 12nF | | ±10% | CL21B123KAANNN□ | | | | 2.0nF | ±5% | CL21B202JBANNN□ | | |
| | 15nF | | ±5% | CL21B153JAANNN□ | | | | 2.0nF | ±10% | CL21B202KBANNN□ | | |
| | 15nF | | ±10% | CL21B153KAANNN□ | | | | 2.2nF | ±5% | CL21B222JBANNN□ | | |
| | 18nF | | ±10% | CL21B183KAANNN□ | | | | 2.2nF | ±10% | CL21B222KBANNN□ | | |
| | 22nF | | ±10% | CL21B223KAANNN□ | | | | 2.2nF | ±20% | CL21B222MBANNN□ | | |
| | 27nF | | ±10% | CL21B273KAANNN□ | | | | 2.4nF | ±10% | CL21B242KBANNN□ | | |
| | 33nF | | ±10% | CL21B333KAANNN□ | | | | 2.4nF | ±20% | CL21B242MBANNN□ | | |
| | 39nF | | ±10% | CL21B393KAANNN□ | | | | 2.7nF | ±5% | CL21B272JBANNN□ | | |
| | 47nF | ±10% | CL21B473KAANNN□ | | 2.7nF | | | ±10% | CL21B272KBANNN□ | | | |
| | 56nF | ±10% | CL21B563KAANNN□ | | 3.0nF | | | ±5% | CL21B302JBANNN□ | | | |
| | | | | 3.0nF | ±20% | CL21B302MBANNN□ | | | | | | |
| | | | | 3.3nF | ±5% | CL21B332JBANNN□ | | | | | | |
| | | | | 3.3nF | ±10% | CL21B332KBANNN□ | | | | | | |
| | | | | 3.6nF | ±10% | CL21B362KBANNN□ | | | | | | |
| | | | | 3.9nF | ±5% | CL21B392JBANNN□ | | | | | | |

※ □ mark means packaging code. If you want to learn the code or quantity in detail, please see p.148

Standard & High Capacitors

Product Line Up (X7R)

■ Size : 2.00 X 1.25mm (inch : 0805)

| Thickness Max. | Rated Voltage | Capacitance | Capacitance Tolerance | Part Number | Remark | Thickness Max. | Rated Voltage | Capacitance | Capacitance Tolerance | Part Number | Remark | | |
|----------------|---------------|-----------------|-----------------------|-----------------|--------|-----------------|-----------------|-----------------|-----------------------|-----------------|--------|-----------------|-----------------|
| 0.75mm | 50Vdc | 3.9nF | ±10% | CL21B392KBANNN□ | | 0.95mm | 50Vdc | 2.7nF | ±10% | CL21B272KBCNNN□ | | | |
| | | 4.7nF | ±5% | CL21B472JBANNN□ | | | | 3.3nF | ±10% | CL21B332KBCNNN□ | | | |
| | | 4.7nF | ±10% | CL21B472KBANNN□ | | | | 4.7nF | ±5% | CL21B472JBCNNN□ | | | |
| | | 5.0nF | ±10% | CL21B502KBANNN□ | | | | 6.8nF | ±10% | CL21B682KBCNNN□ | | | |
| | | 5.1nF | ±10% | CL21B512KBANNN□ | | | | 10nF | ±5% | CL21B103JBCNNN□ | | | |
| | | 5.6nF | ±5% | CL21B562JBANNN□ | | | | 10nF | ±10% | CL21B103KBCNNN□ | | | |
| | | 5.6nF | ±10% | CL21B562KBANNN□ | | | | 18nF | ±5% | CL21B183JBCNNN□ | | | |
| | | 6.8nF | ±5% | CL21B682JBANNN□ | | | | 22nF | ±10% | CL21B223KBCNNN□ | | | |
| | | 6.8nF | ±10% | CL21B682KBANNN□ | | | | 24nF | ±5% | CL21B243JBCNNN□ | | | |
| | | 7.5nF | ±10% | CL21B752KBANNN□ | | | | 33nF | ±5% | CL21B333JBCNNN□ | | | |
| | | 8.2nF | ±5% | CL21B822JBANNN□ | | | | 39nF | ±5% | CL21B393JBCNNN□ | | | |
| | | 8.2nF | ±10% | CL21B822KBANNN□ | | | | 39nF | ±10% | CL21B393KBCNNN□ | | | |
| | | 9.1nF | ±10% | CL21B912KBANNN□ | | | | 47nF | ±5% | CL21B473JBCNNN□ | | | |
| | | 10nF | ±5% | CL21B103JBANNN□ | | | | 47nF | ±10% | CL21B473KBCNNN□ | | | |
| | | 10nF | ±10% | CL21B103KBANNN□ | | | | 47nF | ±20% | CL21B473MBCNNN□ | | | |
| | | 10nF | ±20% | CL21B103MBANNN□ | | | | 51nF | ±10% | CL21B513KBCNNN□ | | | |
| | | 12nF | ±5% | CL21B123JBANNN□ | | | | 56nF | ±5% | CL21B563JBCNNN□ | | | |
| | | 12nF | ±10% | CL21B123KBANNN□ | | | | 56nF | ±10% | CL21B563KBCNNN□ | | | |
| | | 12nF | ±20% | CL21B123MBANNN□ | | | | 68nF | ±5% | CL21B683JBCNNN□ | | | |
| | | 15nF | ±5% | CL21B153JBANNN□ | | | | 68nF | ±10% | CL21B683KBCNNN□ | | | |
| | | 15nF | ±10% | CL21B153KBANNN□ | | | | 82nF | ±5% | CL21B823JBCNNN□ | | | |
| | | 15nF | ±20% | CL21B153MBANNN□ | | | | 82nF | ±10% | CL21B823KBCNNN□ | | | |
| | | 18nF | ±10% | CL21B183KBANNN□ | | | | 100nF | ±5% | CL21B104JBCNNN□ | | | |
| | | 20nF | ±10% | CL21B203KBANNN□ | | | | 100nF | ±10% | CL21B104KBCNNN□ | | | |
| | | 22nF | ±5% | CL21B223JBANNN□ | | | | 100nF | ±20% | CL21B104MBCNNN□ | | | |
| | | 22nF | ±10% | CL21B223KBANNN□ | | | | 1.35mm | 6.3Vdc | 1.0uF | ±10% | CL21B105KQFNNN□ | |
| | | 27nF | ±5% | CL21B273JBANNN□ | | | | | | 2.2uF | ±5% | CL21B225JQFNNN□ | |
| | | 27nF | ±10% | CL21B273KBANNN□ | | | | | | 2.2uF | ±10% | CL21B225KQFNNN□ | |
| | | 33nF | ±5% | CL21B333JBANNN□ | | | | | | 3.3uF | ±10% | CL21B335KQFNNN□ | |
| | | 33nF | ±10% | CL21B333KBANNN□ | | | | | | 3.3uF | ±20% | CL21B335MQFNNN□ | |
| | | 33nF | ±20% | CL21B333MBANNN□ | | | | | | 4.7uF | ±10% | CL21B475KQFNNN□ | Ref. |
| | | 39nF | ±5% | CL21B393JBANNN□ | | | | | | 10Vdc | 470nF | ±10% | CL21B474KPFNNN□ |
| 39nF | ±10% | CL21B393KBANNN□ | | 680nF | ±10% | CL21B684KPFNNN□ | | | | | | | |
| 47nF | ±10% | CL21B473KBANNN□ | | 820nF | ±10% | CL21B824KPFNNN□ | | | | | | | |
| 0.95mm | 16Vdc | 150nF | ±10% | CL21B154KOCNNN□ | | 1.0uF | ±5% | | CL21B105JPFNNN□ | | | | |
| | | 220nF | ±5% | CL21B224JOCNNN□ | | 1.0uF | ±10% | | CL21B105KPFNNN□ | | | | |
| | | 220nF | ±10% | CL21B224KOCNNN□ | | 1.0uF | ±20% | | CL21B105MPFNNN□ | | | | |
| | | 220nF | ±20% | CL21B224MOCNNN□ | | 2.2uF | ±10% | | CL21B225KPFNNN□ | | | | |
| | | 270nF | ±5% | CL21B274JOCNNN□ | | 2.2uF | ±20% | | CL21B225MPFNNN□ | | | | |
| | | 270nF | ±10% | CL21B274KOCNNN□ | | 3.3uF | ±10% | | CL21B335KPFNNN□ | | | | |
| | | 330nF | ±5% | CL21B334JOCNNN□ | | 4.7uF | ±10% | | CL21B475KPFNNN□ | Ref. | | | |
| | | 330nF | ±10% | CL21B334KOCNNN□ | | 16Vdc | 150nF | ±10% | CL21B154KOFNNN□ | | | | |
| | | 330nF | ±20% | CL21B334MOCNNN□ | | | 220nF | ±10% | CL21B224KOFNNN□ | | | | |
| | | 1.0uF | ±10% | CL21B105KOCNNN□ | | | 330nF | ±10% | CL21B334KOFNNN□ | | | | |
| | 25Vdc | 47nF | ±10% | CL21B473KACNNN□ | | | 390nF | ±10% | CL21B394KOFNNN□ | | | | |
| | | 68nF | ±10% | CL21B683KACNNN□ | | | 470nF | ±5% | CL21B474JOFNNN□ | | | | |
| | | 82nF | ±10% | CL21B823KACNNN□ | | | 470nF | ±10% | CL21B474KOFNNN□ | | | | |
| | | 100nF | ±5% | CL21B104JACNNN□ | | | 470nF | ±20% | CL21B474MOFNNN□ | | | | |
| | | 100nF | ±10% | CL21B104KACNNN□ | | | 680nF | ±5% | CL21B684JOFNNN□ | | | | |
| | | 100nF | ±20% | CL21B104MACNNN□ | | 680nF | ±10% | CL21B684KOFNNN□ | | | | | |
| 120nF | | ±5% | CL21B124JACNNN□ | | 680nF | ±20% | CL21B684MOFNNN□ | | | | | | |
| 120nF | | ±10% | CL21B124KACNNN□ | | 1.0uF | ±10% | CL21B105KOFNNN□ | | | | | | |
| 150nF | | ±10% | CL21B154KACNNN□ | | 2.2uF | ±10% | CL21B225KOFNNN□ | | | | | | |
| 150nF | | ±20% | CL21B154MACNNN□ | | 2.2uF | ±20% | CL21B225MOFNNN□ | | | | | | |
| 50Vdc | 1.0nF | ±10% | CL21B102KBCNNN□ | | 4.7uF | ±10% | CL21B475KOFNNN□ | Ref. | | | | | |
| | 2.2nF | ±10% | CL21B222KBCNNN□ | | | | | | | | | | |

※ □ mark means packaging code. If you want to learn the code or quantity in detail, please see p.148

Product Line Up (X7R)

■ Size : 2.00 X 1.25mm (inch : 0805)

| Thickness Max. | Rated Voltage | Capacitance | Capacitance Tolerance | Part Number | Remark | Thickness Max. | Rated Voltage | Capacitance | Capacitance Tolerance | Part Number | Remark | | |
|----------------|---------------|-------------|-----------------------|-----------------|-----------------|----------------|-----------------|----------------|-----------------------|-----------------|-----------------|-----------------|--|
| 1.35mm | 25Vdc | 18nF | ±10% | CL21B183KAFNNN□ | | 1.00mm | 16Vdc | 270nF | ±20% | CL31B274MOCNNN□ | | | |
| | | 47nF | ±10% | CL21B473KAFNNN□ | | | | 330nF | ±10% | CL31B334KOCNNN□ | | | |
| | | 100nF | ±10% | CL21B104KAFNNN□ | | | | 330nF | ±20% | CL31B334MOCNNN□ | | | |
| | | 150nF | ±10% | CL21B154KAFNNN□ | | | | 390nF | ±10% | CL31B394KOCNNN□ | | | |
| | | 180nF | ±10% | CL21B184KAFNNN□ | | | | 470nF | ±10% | CL31B474KOCNNN□ | | | |
| | | 220nF | ±5% | CL21B224JAFNNN□ | | | | 560nF | ±10% | CL31B564KOCNNN□ | | | |
| | | 220nF | ±10% | CL21B224KAFNNN□ | | | | 680nF | ±10% | CL31B684KOCNNN□ | | | |
| | | 220nF | ±20% | CL21B224MAFNNN□ | | | | 25Vdc | 4.7nF | ±10% | CL31B472KACNNN□ | | |
| | | 270nF | ±10% | CL21B274KAFNNN□ | | | | | 22nF | ±10% | CL31B223KACNNN□ | | |
| | | 330nF | ±10% | CL21B334KAFNNN□ | | | | | 47nF | ±10% | CL31B473KACNNN□ | | |
| | | 390nF | ±10% | CL21B394KAFNNN□ | | | | | 68nF | ±10% | CL31B683KACNNN□ | | |
| | | 470nF | ±5% | CL21B474JAFNNN□ | | | | | 100nF | ±10% | CL31B104KACNNN□ | | |
| | | 470nF | ±10% | CL21B474KAFNNN□ | | | | | 120nF | ±10% | CL31B124KACNNN□ | | |
| | | 1.0uF | ±10% | CL21B105KAFNNN□ | | | | | 150nF | ±10% | CL31B154KACNNN□ | | |
| | | 1.5uF | ±10% | CL21B155KAFNNN□ | | | 180nF | | ±10% | CL31B184KACNNN□ | | | |
| | | 2.2uF | ±10% | CL21B225KAFNNN□ | | | 220nF | | ±5% | CL31B224JACNNN□ | | | |
| | | 4.7uF | ±10% | CL21B475KAFNNN□ | Ref. | | 220nF | | ±10% | CL31B224KACNNN□ | | | |
| | 35Vdc | 1.0uF | ±10% | CL21B105KLFNNN□ | | | 270nF | | ±10% | CL31B274KACNNN□ | | | |
| | | 50Vdc | 560pF | ±10% | CL21B561KBFNNN□ | | | | 330nF | ±10% | CL31B334KACNNN□ | | |
| | | | 47nF | ±10% | CL21B473KBFNNN□ | | | | 390nF | ±10% | CL31B394KACNNN□ | | |
| | | | 68nF | ±5% | CL21B683JBFNNN□ | | | | 50Vdc | 120pF | ±10% | CL31B121KBCNNN□ | |
| | | | 68nF | ±10% | CL21B683KBFNNN□ | | | | | 180pF | ±10% | CL31B181KBCNNN□ | |
| | | | 75nF | ±10% | CL21B753KBFNNN□ | | | | | 220pF | ±10% | CL31B221KBCNNN□ | |
| | | | 82nF | ±10% | CL21B823KBFNNN□ | | | | | 270pF | ±10% | CL31B271KBCNNN□ | |
| | | | 100nF | ±5% | CL21B104JBFNNN□ | | | 330pF | | ±10% | CL31B331KBCNNN□ | | |
| | | | 100nF | ±10% | CL21B104KBFNNN□ | | | 390pF | | ±5% | CL31B391JBCNNN□ | | |
| | | | 100nF | ±20% | CL21B104MBFNNN□ | | | 390pF | | ±10% | CL31B391KBCNNN□ | | |
| | | | 120nF | ±10% | CL21B124KBFNNN□ | | | 470pF | | ±10% | CL31B471KBCNNN□ | | |
| | | | 150nF | ±10% | CL21B154KBFNNN□ | | | 560pF | | ±10% | CL31B561KBCNNN□ | | |
| | | | 220nF | ±5% | CL21B224JBFNNN□ | | | 680pF | | ±10% | CL31B681KBCNNN□ | | |
| | | | 220nF | ±10% | CL21B224KBFNNN□ | | | 820pF | | ±10% | CL31B821KBCNNN□ | | |
| | | | 270nF | ±10% | CL21B274KBFNNN□ | | | 1.0nF | | ±5% | CL31B102KBCNNN□ | | |
| | | | 330nF | ±10% | CL21B334KBFNNN□ | | | 1.0nF | | ±10% | CL31B102KBCNNN□ | | |
| | | | 470nF | ±10% | CL21B474KBFNNN□ | | | 1.0nF | | ±20% | CL31B102MBCNNN□ | | |
| | | | 680nF | ±10% | CL21B684KBFNNN□ | | | 1.2nF | ±10% | CL31B122KBCNNN□ | | | |
| | | | 1.0uF | ±10% | CL21B105KBFNNN□ | | | 1.5nF | ±5% | CL31B152JBCNNN□ | | | |
| | | | 1.0uF | ±20% | CL21B105MBFNNN□ | | | 1.5nF | ±10% | CL31B152KBCNNN□ | | | |
| | | | 1.40mm | 6.3Vdc | 4.7uF | | ±10% | CL21B475KQNNN□ | Ref. | 1.8nF | ±10% | CL31B182KBCNNN□ | |
| | 10uF | | | | ±10% | | CL21B106KQNNN□ | | 2.0nF | ±10% | CL31B202KBCNNN□ | | |
| | 10Vdc | 4.7uF | | ±10% | CL21B475KPQNNN□ | | Ref. | 2.2nF | ±10% | CL31B222KBCNNN□ | | | |
| | | 10uF | ±10% | CL21B106KPQNNN□ | | | 2.4nF | ±10% | CL31B242KBCNNN□ | | | | |
| | 16Vdc | 10uF | ±10% | CL21B106KQNNN□ | | | 3.0nF | ±10% | CL31B302KBCNNN□ | | | | |
| | | | | | | | 3.3nF | ±5% | CL31B332JBCNNN□ | | | | |
| | | | | | 3.3nF | ±10% | CL31B332KBCNNN□ | | | | | | |
| | | | | | 3.9nF | ±5% | CL31B392JBCNNN□ | | | | | | |
| | | | | | 3.9nF | ±10% | CL31B392KBCNNN□ | | | | | | |
| | | | | | 4.7nF | ±5% | CL31B472JBCNNN□ | | | | | | |
| | | | | | 4.7nF | ±10% | CL31B472KBCNNN□ | | | | | | |
| | | | | | 5.0nF | ±20% | CL31B502MBCNNN□ | | | | | | |
| | | | | | 5.6nF | ±5% | CL31B562JBCNNN□ | | | | | | |
| | | | | | 5.6nF | ±10% | CL31B562KBCNNN□ | | | | | | |
| | | | | | 6.8nF | ±5% | CL31B682JBCNNN□ | | | | | | |
| | | | | | 6.8nF | ±10% | CL31B682KBCNNN□ | | | | | | |
| | | | | | 8.2nF | ±10% | CL31B822KBCNNN□ | | | | | | |

■ Size : 3.20 X 1.60mm (inch : 1206)

| Thickness Max. | Rated Voltage | Capacitance | Capacitance Tolerance | Part Number | Remark |
|----------------|---------------|-------------|-----------------------|-----------------|--------|
| 1.00mm | 10Vdc | 1.0uF | ±10% | CL31B105KPCNNN□ | |
| | | 1.2uF | ±10% | CL31B125KPCNNN□ | |
| | 16Vdc | 22nF | ±5% | CL31B223JOCNNN□ | |
| | | 100nF | ±10% | CL31B104KOCNNN□ | |
| | | 220nF | ±10% | CL31B224KOCNNN□ | |
| | | 270nF | ±10% | CL31B274KOCNNN□ | |

※ □ mark means packaging code. If you want to learn the code or quantity in detail, please see p.148

Standard & High Capacitors

Product Line Up (X7R)

■ Size : 3.20 X 1.60mm (inch : 1206)

| Thickness Max. | Rated Voltage | Capacitance | Capacitance Tolerance | Part Number | Remark | Thickness Max. | Rated Voltage | Capacitance | Capacitance Tolerance | Part Number | Remark | |
|----------------|---------------|------------------|-----------------------|-------------------|------------------|-----------------|---------------|-----------------|-----------------------|-----------------|-----------------|--|
| 1.00mm | 50Vdc | 10nF | ±5% | CL31B103JBCNND □ | | 1.80mm | 6.3Vdc | 10uF | ±10% | CL31B106KQHND □ | | |
| | | 10nF | ±10% | CL31B103KBCNND □ | | | | 10uF | ±20% | CL31B106MQHND □ | | |
| | | 10nF | ±20% | CL31B103MBCNND □ | | | | 22uF | ±10% | CL31B226KQHND □ | | |
| | | 15nF | ±5% | CL31B153JBCNND □ | | | | 10Vdc | 4.7uF | ±10% | CL31B475KPHND □ | |
| | | 15nF | ±10% | CL31B153KBCNND □ | | | | | 6.8uF | +80/-20% | CL31B685ZPHND □ | |
| | | 18nF | ±10% | CL31B183KBCNND □ | | | | | 10uF | ±10% | CL31B106KPHND □ | |
| | | 22nF | ±5% | CL31B223JBCNND □ | | | 22uF | | ±10% | CL31B226KPHND □ | | |
| | | 22nF | ±10% | CL31B223KBCNND □ | | | 22uF | | ±20% | CL31B226MPHND □ | | |
| | | 27nF | ±5% | CL31B273JBCNND □ | | | 16Vdc | | 1.0uF | ±20% | CL31B105MOHND □ | |
| | | 27nF | ±10% | CL31B273KBCNND □ | | | | 2.2uF | ±10% | CL31B225KOHND □ | | |
| | | 33nF | ±5% | CL31B333JBCNND □ | | | | 2.2uF | ±20% | CL31B225MOHND □ | | |
| | | 33nF | ±10% | CL31B333KBCNND □ | | | | 3.3uF | ±10% | CL31B335KOHND □ | | |
| | | 39nF | ±5% | CL31B393JBCNND □ | | | | 4.7uF | ±10% | CL31B475KOHND □ | | |
| | | 39nF | ±10% | CL31B393KBCNND □ | | | | 10uF | ±10% | CL31B106KOHND □ | | |
| | | 47nF | ±5% | CL31B473JBCNND □ | | | 10uF | ±20% | CL31B106MOHND □ | | | |
| | | 47nF | ±10% | CL31B473KBCNND □ | | | 25Vdc | 680nF | ±10% | CL31B684KAHND □ | | |
| | | 56nF | ±5% | CL31B563JBCNND □ | | | | 1.0uF | ±5% | CL31B105JAHND □ | | |
| | | 56nF | ±10% | CL31B563KBCNND □ | | | | 1.0uF | ±10% | CL31B105KAHND □ | | |
| | | 68nF | ±10% | CL31B683KBCNND □ | | | | 1.0uF | ±20% | CL31B105MAHND □ | | |
| | | 82nF | ±10% | CL31B823KBCNND □ | | | | 1.2uF | ±20% | CL31B125MAHND □ | | |
| | | 100nF | ±5% | CL31B104JBCNND □ | | | | 2.2uF | ±10% | CL31B225KAHND □ | | |
| | | 100nF | ±10% | CL31B104KBCNND □ | | | | 2.2uF | ±20% | CL31B225MAHND □ | | |
| | | 100nF | ±20% | CL31B104MBCNND □ | | | | 4.7uF | ±10% | CL31B475KAHND □ | | |
| | | 120nF | ±10% | CL31B124KBCNND □ | | | | 4.7uF | ±20% | CL31B475MAHND □ | | |
| 150nF | ±10% | CL31B154KBCNND □ | | 10uF | ±10% | CL31B106KAHND □ | | | | | | |
| 220nF | ±10% | CL31B224KBCNND □ | | 10uF | ±10% | CL31B106KLHND □ | | Ref. | | | | |
| 1.20mm | 16Vdc | 4.7uF | ±10% | CL31B475KOELEND □ | | 35Vdc | | 10uF | ±10% | CL31B106KLHND □ | Ref. | |
| 1.25mm | 10Vdc | 2.2uF | ±10% | CL31B225KPENND □ | | 50Vdc | 4.7nF | ±10% | CL31B472KBHND □ | | | |
| | | 2.2uF | ±20% | CL31B225MPENND □ | | | 390nF | ±10% | CL31B394KBHND □ | | | |
| 25Vdc | 1.0uF | ±10% | CL31B105KAPLEND □ | | 470nF | | ±5% | CL31B474JBHND □ | | | | |
| | 1.0uF | ±20% | CL31B105KAPLEND □ | | 470nF | | ±10% | CL31B474KBHND □ | | | | |
| 1.40mm | 10Vdc | 1.5uF | ±10% | CL31B155KPFNND □ | | | 680nF | ±10% | CL31B684KBHND □ | | | |
| | | 2.2uF | ±10% | CL31B225KPFNND □ | | | 1.0uF | ±10% | CL31B105KBHND □ | | | |
| | | 2.2uF | ±20% | CL31B225MPFNND □ | | | 2.2uF | ±10% | CL31B225KBHND □ | | | |
| | | 16Vdc | 820nF | ±10% | CL31B824KOFNND □ | | | 4.7uF | ±10% | CL31B475KBHND □ | | |
| | | | 1.0uF | ±5% | CL31B105JOFNND □ | | | 10uF | ±10% | CL31B106KBHND □ | Ref. | |
| | | | 1.0uF | ±10% | CL31B105KOFNND □ | | | | | | | |
| | 1.0uF | | ±20% | CL31B105MOFNND □ | | | | | | | | |
| | 1.5uF | | ±10% | CL31B155KOFNND □ | | | | | | | | |
| | 25Vdc | | 10nF | ±2% | CL31B103GAFNND □ | | | | | | | |
| | | 470nF | ±5% | CL31B474JAFNND □ | | | | | | | | |
| | | 470nF | ±10% | CL31B474KAFNND □ | | | | | | | | |
| | | 470nF | ±20% | CL31B474MAFNND □ | | | | | | | | |
| | | 560nF | ±10% | CL31B564KAFNND □ | | | | | | | | |
| | | 50Vdc | 100nF | ±10% | CL31B104KBFNND □ | | | | | | | |
| | 180nF | | ±10% | CL31B184KBFNND □ | | | | | | | | |
| | 200nF | | ±10% | CL31B204KBFNND □ | | | | | | | | |
| | 220nF | | ±5% | CL31B224JBFNND □ | | | | | | | | |
| | 220nF | | ±10% | CL31B224KBFNND □ | | | | | | | | |
| 220nF | ±20% | | CL31B224MBFNND □ | | | | | | | | | |
| 270nF | ±10% | | CL31B274KBFNND □ | | | | | | | | | |
| 330nF | ±5% | | CL31B334JBFNND □ | | | | | | | | | |
| 330nF | ±10% | | CL31B334KBFNND □ | | | | | | | | | |
| 330nF | ±20% | | CL31B334MBFNND □ | | | | | | | | | |
| 1.80mm | 6.3Vdc | 3.3uF | ±10% | CL31B335KQHND □ | | | | | | | | |
| | | 6.8uF | ±10% | CL31B685KQHND □ | | | | | | | | |

* □ mark means packaging code. If you want to learn the code or quantity in detail, please see p.148

Product Line Up (X7R)

■ Size : 3.20 X 2.50mm (inch : 1210)

| Thickness Max. | Rated Voltage | Capacitance | Capacitance Tolerance | Part Number | Remark | Thickness Max. | Rated Voltage | Capacitance | Capacitance Tolerance | Part Number | Remark |
|----------------|---------------|-------------|-----------------------|------------------|--------|----------------|---------------|-------------|-----------------------|------------------|--------|
| 1.45mm | 16Vdc | 100nF | ± 10% | CL32B104KOFNNN □ | | 2.70mm | 50Vdc | 4.7uF | ± 10% | CL32B475KBJNNN □ | |
| | | 220nF | ± 10% | CL32B224KOFNNN □ | | | | 10uF | ± 10% | CL32B106KBJNNN □ | |
| | | 470nF | ± 10% | CL32B474KOFNNN □ | | | | | | | |
| | | 680nF | ± 10% | CL32B684KOFNNN □ | | | | | | | |
| | | 1.0uF | ± 10% | CL32B105KOFNNN □ | | | | | | | |
| | | 2.2uF | ± 10% | CL32B225KOFNNN □ | | | | | | | |
| | 25Vdc | 220nF | ± 5% | CL32B224JAFNNN □ | | | | | | | |
| | | 220nF | ± 10% | CL32B224KAFNNN □ | | | | | | | |
| | | 470nF | ± 20% | CL32B474MAFNNN □ | | | | | | | |
| | | 560nF | ± 5% | CL32B564JAFNNN □ | | | | | | | |
| | | 1.0uF | ± 10% | CL32B105KAFNNN □ | | | | | | | |
| | 50Vdc | 47nF | ± 10% | CL32B473KBFNNN □ | | | | | | | |
| | | 100nF | ± 5% | CL32B104JBFNNN □ | | | | | | | |
| | | 100nF | ± 10% | CL32B104KBFNNN □ | | | | | | | |
| | | 100nF | ± 20% | CL32B104MBFNNN □ | | | | | | | |
| | | 120nF | ± 5% | CL32B124JBFNNN □ | | | | | | | |
| | | 120nF | ± 10% | CL32B124KBFNNN □ | | | | | | | |
| | | 120nF | ± 20% | CL32B124MBFNNN □ | | | | | | | |
| | | 150nF | ± 5% | CL32B154JBFNNN □ | | | | | | | |
| | | 150nF | ± 10% | CL32B154KBFNNN □ | | | | | | | |
| | | 220nF | ± 5% | CL32B224JBFNNN □ | | | | | | | |
| | | 220nF | ± 10% | CL32B224KBFNNN □ | | | | | | | |
| | | 270nF | ± 10% | CL32B274KBFNNN □ | | | | | | | |
| | | 330nF | ± 5% | CL32B334JBFNNN □ | | | | | | | |
| | | 330nF | ± 10% | CL32B334KBFNNN □ | | | | | | | |
| | | 390nF | ± 10% | CL32B394KBFNNN □ | | | | | | | |
| | | 470nF | ± 5% | CL32B474JBFNNN □ | | | | | | | |
| | | 470nF | ± 10% | CL32B474KBFNNN □ | | | | | | | |
| 1.80mm | 16Vdc | 3.3uF | ± 10% | CL32B335KOHNNN □ | | | | | | | |
| | 25Vdc | 330nF | ± 10% | CL32B334KAHNNN □ | | | | | | | |
| | | 2.2uF | ± 10% | CL32B225KAHNNN □ | | | | | | | |
| | 50Vdc | 820nF | ± 10% | CL32B824KBHNNN □ | | | | | | | |
| | | 1.0uF | ± 10% | CL32B105KBHNNN □ | | | | | | | |
| | | 1.0uF | ± 20% | CL32B105MBHNNN □ | | | | | | | |
| 2.00mm | 16Vdc | 10uF | ± 10% | CL32B106KOLN □ | | | | | | | |
| | 25Vdc | 10uF | ± 10% | CL32B106KALN □ | | | | | | | |
| | 35Vdc | 4.7uF | ± 10% | CL32B475KLULN □ | | | | | | | |
| | | 10uF | ± 10% | CL32B106KLULN □ | | | | | | | |
| 2.20mm | 10Vdc | 4.7uF | ± 10% | CL32B475KPINN □ | | | | | | | |
| | | 10uF | ± 10% | CL32B106KPINN □ | | | | | | | |
| | 16Vdc | 4.7uF | ± 10% | CL32B475KONN □ | | | | | | | |
| 2.70mm | 6.3Vdc | 22uF | ± 20% | CL32B226MQJNN □ | | | | | | | |
| | | 47uF | ± 20% | CL32B476MQJNN □ | Ref. | | | | | | |
| | 10Vdc | 22uF | ± 10% | CL32B226KPJNN □ | | | | | | | |
| | | 47uF | ± 20% | CL32B476MPJNN □ | Ref. | | | | | | |
| | 16Vdc | 10uF | ± 10% | CL32B106KOJNN □ | | | | | | | |
| | | 22uF | ± 10% | CL32B226KOJNN □ | | | | | | | |
| | | 22uF | ± 20% | CL32B226MOJNN □ | | | | | | | |
| | 25Vdc | 3.3uF | ± 10% | CL32B335KAJNN □ | | | | | | | |
| | | 10uF | ± 10% | CL32B106KAJNN □ | | | | | | | |
| | | 22uF | ± 10% | CL32B226KAJNN □ | | | | | | | |
| 35Vdc | 10uF | ± 10% | CL32B106KLJNN □ | | | | | | | | |
| 50Vdc | 2.2uF | ± 10% | CL32B225KBJNN □ | | | | | | | | |

※ Remarks : Symbols in this catalog have the following definition.

Derating This capacitor with derating is designed for 70% of the rated voltage or less.

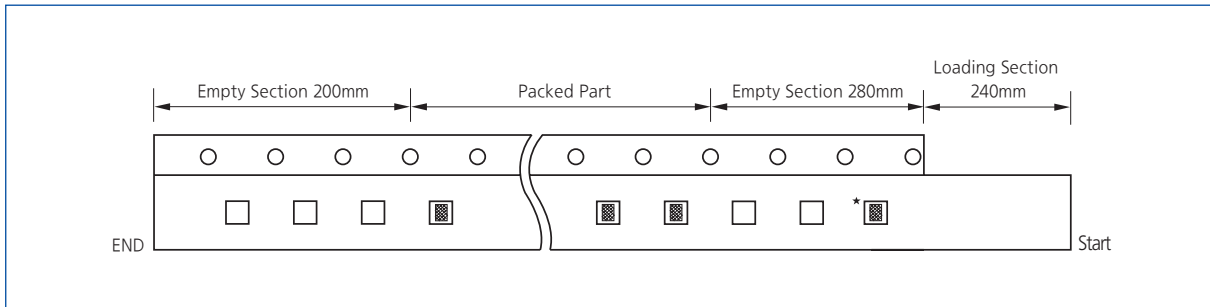
dv/dt dv/dt means Pulse(dv/dt) Guarantee Capacitor, 10,000V/us(=10V/ns) max.10,000 cycles guarantee(@Vr, Room temp)

Ref. Reference means that CAP & TCC have the exceptional measurement conditions for Capacitance and Temperature Characteristics of Capacitance. So please refer to the individual specification for CAP and the individual characteristics data for TCC on Website.

※ □ mark means packaging code. If you want to learn the code or quantity in detail, please see p.148

Packaging Specifications

Taping figure



★The chip is only use for identifying the label and packaged products. Please don't use the chip.

Packaging Code & Quantity

Unit : kpcs

| Size inch(mm) | Thickness code | Cardboard(Paper) Type | | | | | | | | | | |
|------------------|-------------------|-----------------------|---|----|----|----|----------|----------|----|-----|----|----|
| | | 7" Reel | | | | | 10" Reel | 13" Reel | | | | |
| | | C | 8 | H | Z* | Y* | O | D | L | 2* | 7* | 3 |
| 01005(0402) | 2 | 20 | - | - | - | - | - | 100 | 50 | - | - | - |
| 0201(0603) | 3 | 10 | - | 15 | 10 | 10 | 30 | 50 | - | 150 | 50 | - |
| 0402(1005) | 3 | 10 | - | 15 | - | - | 30 | 50 | - | - | - | - |
| | 5 | 10 | 8 | - | 10 | 10 | 30 | 50 | 40 | 100 | 50 | - |
| | 7,8(THMC) | - | 8 | - | - | - | - | - | - | - | - | 30 |
| 0504(1410) | 8 | 4 | - | - | - | - | 10 | 10 | 15 | - | - | - |
| | 5 | 4 | - | - | - | - | 30 | 50 | - | - | - | - |
| 0603(1608) | 8 | 4 | - | - | 4 | 4 | 10 | 10 | 15 | - | - | - |
| | 9,N | 4 | - | - | - | - | - | - | - | - | - | - |
| 0805(2012) | A,C | 4 | - | - | - | - | 10 | 10 | 15 | - | - | - |
| 1206(3216) | C | 4 | - | - | - | - | 10 | 10 | 15 | - | - | - |

* 2 = 1mm Pitch / Z = Chip aligned for horizontal / Y, 7 = Chip aligned for vertical

Unit : kpcs

| Size inch(mm) | Thickness code | Embossed(Plastic) Type | | | | | | | Bulk case Type | Bulk Type |
|------------------|-------------------|------------------------|---|----|----|----------|----------|----|-------------------|--------------|
| | | 7" Reel | | | | 10" Reel | 13" Reel | | | |
| | | E | G | W* | R* | S | F | P | | |
| 01005(0402) | 2 | 50 | - | - | - | - | - | - | - | - |
| 0201(0603) | 1 | 10 | - | - | - | - | - | - | - | - |
| 0402(1005) | 1,2,L | 15 | - | - | - | - | - | - | - | - |
| | 3,5 | - | - | - | - | - | - | - | 50 | - |
| 0603(1608) | 8 | 3 | - | - | 3 | - | 10 | 15 | - | - |
| | E,M | 3 | - | - | - | - | - | - | - | - |
| 0604(1610) | D | 3 | - | 3 | - | 6 | 10 | - | - | - |
| | A,C | - | - | - | - | - | - | 10 | - | - |
| 0805(2012) | E | 2 | 3 | 2 | - | 6 | 10 | 5 | - | - |
| | F | 2 | 3 | 2 | - | 6 | 10 | 5 | - | - |
| | Q | 2 | 3 | 2 | - | 6 | 10 | 5 | - | - |
| 1206(3216) | E,P,F | 2 | 3 | - | - | 6 | 10 | - | - | - |
| | H | 2 | - | 2 | - | 4 | 8 | - | - | - |
| 1210(3225) | 9,D,C,O | 2 | - | - | - | - | 10 | - | - | - |
| | E,F,M | 2 | - | - | - | - | 10 | - | - | - |
| | H,T | 2 | - | - | - | 4 | 8 | - | - | - |
| | I,U | 2 | - | - | - | - | 4 | - | - | - |
| | J,V | 1 | - | 1 | - | - | 4 | - | - | - |
| | S | 2 | - | - | - | - | 8 | - | - | - |
| 1808(4520) | F | 2 | - | - | - | - | - | - | - | - |
| 1812(4532) | F | 1 | - | - | - | - | 4 | - | - | - |
| | H,I | 1 | - | - | - | - | 4 | - | - | - |
| | J,L | - | - | - | - | - | 2 | - | - | - |
| 2220(5750) | H,I,J | - | - | - | - | - | 2 | - | - | - |

* R = Chip aligned for horizontal / W = Chip aligned for vertical