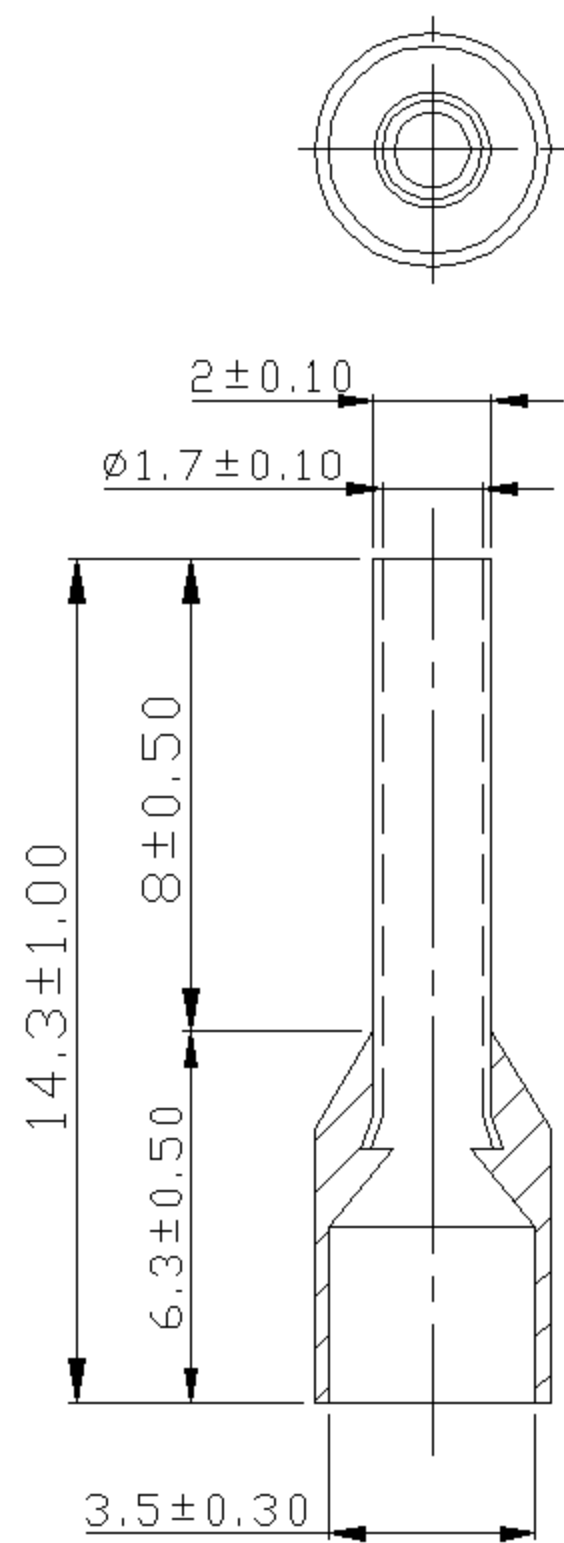


A B C D E F G H

REV	DESCRIPTION	DATE
-----	-------------	------



NOTE:

- MAXIMUM ELECTRIC CURRENT : 

A.W.G.	16
AMP.	18
- MAXIMUM ELECTRICAL RATING : 105°C 600 VOLTS MAX.
- INSULATION MATERIAL : NYLON
- INSULATION COLOR :  
 FRENCH COLOR : BLACK  
 GERMAN COLOR : RED  
 DIN COLOR : BLACK
- CONNECTOR MATERIAL : COPPER TUBE.
- WIRE RANGE : 16 A.W.G.( 1.5 mm<sup>2</sup>)

Tolerance Unless Otherwise Specified	
0 > 6 mm	$\pm 0.20$ ANGLE
6 > 18 mm	$\pm 0.30$ 0° REF ±
18 > 30 mm	$\pm 0.40$ ±
30 > 75 mm	$\pm 0.50$ ±

NAME	NYLON-INSULATED CORD END TERMINALS (E SERIES)			UNIT	mm	
PART NO.	E1508	MATERIAL	-----	APPROVE	張馨尹	
NUMBER	KA-95424-C	SCALE	SHEET	PAGE	CHECKED	
DATE	2006/05/10	5/1	1-0	10F1	DRAWN	張馨尹

**KST® K.S. TERMINALS INC.**

A B C D E F G H