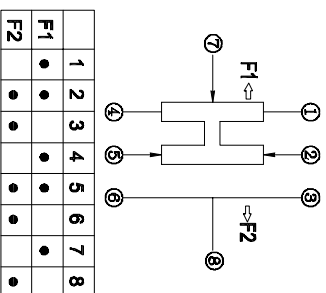


PCB Layout(Pattern side)

- Note:
1. Rating : DC 12V 50mA
 2. Contact Resistance : $\leq 50m\Omega$
 3. Insulation Resistance: DC500V 1Minute
 4. Operating Temperature Range: $-25^{\circ}C+80^{\circ}C$
 5. Ambient Humidity Used: $\leq 85\%RH$
 6. Operating Force : 200gf $\pm 50gf$
 7. Operating Life : 10,000Cycles



Circuit Diagram

⑤	Contact Spring	—	1	Phosphor bronze	Ag Plated	—
④	Cover	—	1	SUS	Natural	—
③	KNOB	—	1	PA10T	Black	—
②	Terminal	—	3	Bross	Ag Plated	—
①	Base	—	1	LCP	Black	—
ITEM	PART NAME	TER'NO.	QTY.	MATERIAL	FINISHING	REMARK
APPROVALS		DATE		ELECTRONICS CO.,LTD		
DRAWN JKUN.LU		2013/10/8		TOGGLE SWITCHES		
CHECKED		TITLE:		K3-2276S		
APPROVALS		PART NO.		SCALE: 1:1		
TOLERANCES ARE		UNIT: mm		DRAWING NO.		
30~12.5 ±0.30		±0.20		PROJ: ①		
10~30 ±0.20		±0.15		SHEET 1 OF 1		
5~10 ±0.10		±2'				

ECN NO.	REV.	DATE.	DESCRIPTION.	CHANGE.	CHECK.	APPRO.
	A		NEW			