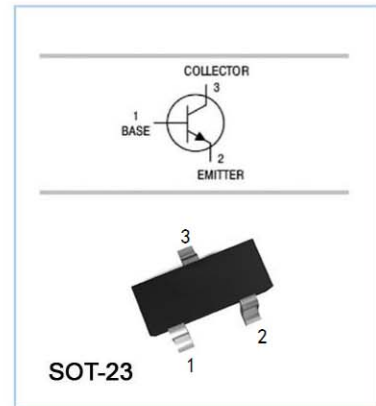


## NPN Silicon Epitaxial Planar Transistor

for switching and amplifier applications. Especially suitable for AF-driver stages and low power output stages.



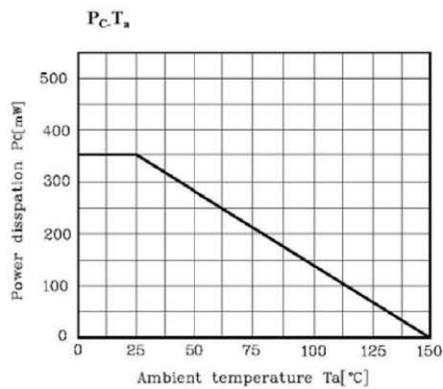
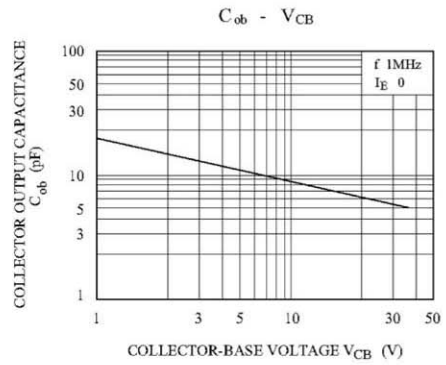
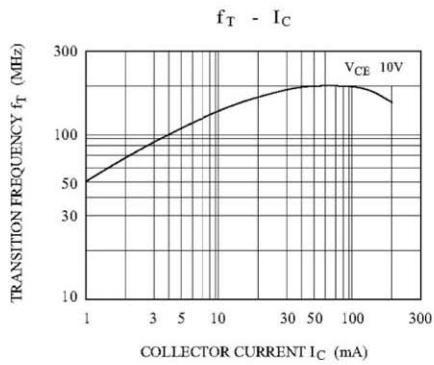
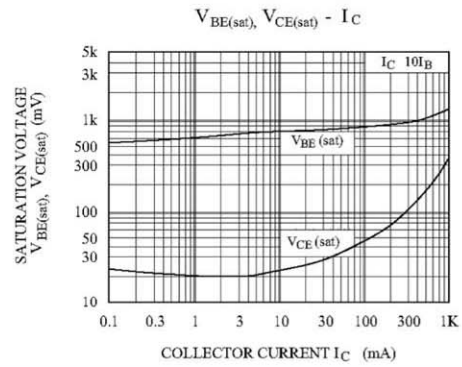
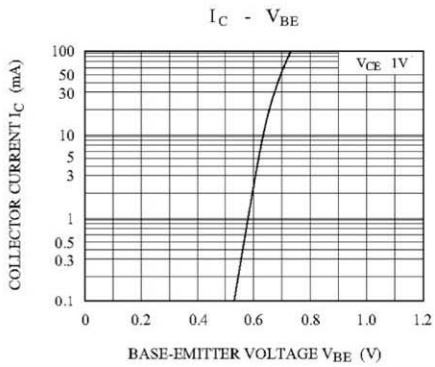
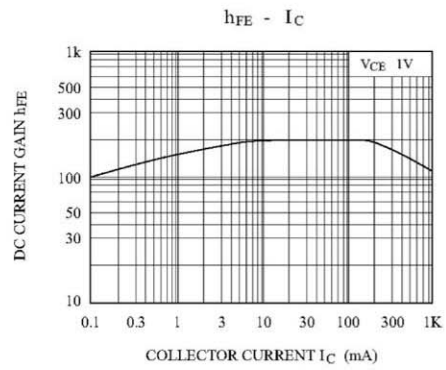
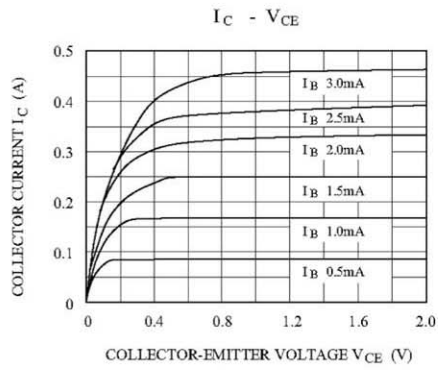
### Absolute Maximum Ratings ( $T_a = 25\text{ }^\circ\text{C}$ )

Parameter	Symbol	Value	Unit
Collector Base Voltage	$V_{CBO}$	40	V
Collector Emitter Voltage	$V_{CEO}$	25	V
Emitter Base Voltage	$V_{EBO}$	6	V
Collector Current	$I_C$	1.5	A
Power Dissipation	$P_{tot}$	350	mW
Junction Temperature	$T_j$	150	$^\circ\text{C}$
Storage Temperature Range	$T_{stg}$	- 55 to + 150	$^\circ\text{C}$

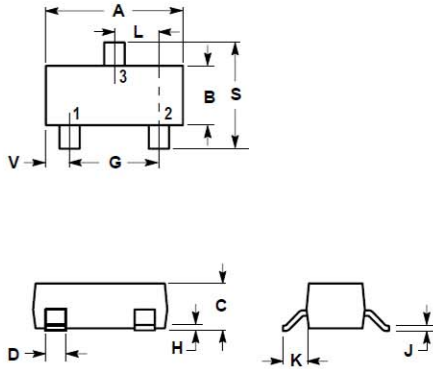
### Characteristics at $T_a = 25\text{ }^\circ\text{C}$

Parameter	Symbol	Min.	Max.	Unit
DC Current Gain at $V_{CE} = 1\text{ V}$ , $I_C = 100\text{ mA}$	$h_{FE}$	200	350	-
at $V_{CE} = 1\text{ V}$ , $I_C = 800\text{ mA}$				
Collector Base Cutoff Current at $V_{CB} = 35\text{ V}$	$I_{CBO}$	-	100	nA
Emitter Base Cutoff Current at $V_{EB} = 6\text{ V}$	$I_{EBO}$	-	100	nA
Collector Base Breakdown Voltage at $I_C = 100\text{ }\mu\text{A}$	$V_{(BR)CBO}$	40	-	V
Collector Emitter Breakdown Voltage at $I_C = 2\text{ mA}$	$V_{(BR)CEO}$	25	-	V
Emitter Base Breakdown Voltage at $I_E = 100\text{ }\mu\text{A}$	$V_{(BR)EBO}$	6	-	V
Collector Emitter Saturation Voltage at $I_C = 800\text{ mA}$ , $I_B = 80\text{ mA}$	$V_{CE(sat)}$	-	0.5	V
Base Emitter Saturation Voltage at $I_C = 800\text{ mA}$ , $I_B = 80\text{ mA}$	$V_{BE(sat)}$	-	1.2	V
Base Emitter Voltage at $V_{CE} = 1\text{ V}$ , $I_C = 10\text{ mA}$	$V_{BE(on)}$	-	1	V
Gain Bandwidth Product at $V_{CE} = 10\text{ V}$ , $I_C = 50\text{ mA}$	$f_T$	120	-	MHz





## SOT-23 PACKAGE



### NOTES:

1. DIMENSIONING AND TOLERANCING PER ANSI Y14.5M.1982
2. CONTROLLING DIMENSION: INCH.

DIM	INCHES		MILLIMETERS	
	MIN	MAX	MIN	MAX
A	0.1102	0.1197	2.80	3.04
B	0.0472	0.0551	1.20	1.40
C	0.0350	0.0440	0.89	1.11
D	0.0150	0.0200	0.37	0.50
G	0.0701	0.0807	1.78	2.04
H	0.0005	0.0040	0.013	0.100
J	0.0034	0.0070	0.085	0.177
K	0.0140	0.0285	0.35	0.69
L	0.0350	0.0401	0.89	1.02
S	0.0830	0.1039	2.10	2.64
V	0.0177	0.0236	0.45	0.60

